

**MCH Health Problem Analysis for
Putnam
Calendar Year 2005**

Population

	Putnam		Florida	
	Number	Percentage	Number	Percentage
Total	73,897		18,018,497	
White	60,467	81.83	14,581,665	80.93
Nonwhite	13,430	18.17	3,436,832	19.07
Black	12,539	16.97	2,949,668	16.37
Other	891	1.21	487,164	2.70

Data Source: Population Estimates from the Florida Legislature, Office of Economic & Demographic Research

Births

	Putnam		Florida	
	Number	Percentage	Number	Percentage
Total	1,034		226,219	
White *	766	74.08	166,181	73.46
Black *	252	24.37	47,957	21.20
Other *	16	1.55	11,651	5.15
Hispanic **	169	16.34	63,757	28.18
Non-Hispanic **	865	83.66	161,615	71.44

*Regardless of ethnicity. Does not include persons whose race is unknown.

**Regardless of race. Does not include persons whose ethnicity is unknown.

Data Source: Florida Department of Health, Office of Vital Statistics

Infant Deaths - Actual vs Expected

Total Births	Actual Infant Deaths	Expected Infant Deaths	Significance
1,034	19	8.10	H
		Actual Infant Death Rate per 1,000 Births	Expected Infant Death Rate per 1,000 Births
		18.38	7.83

H=Actual Rate is Significantly Higher than the Expected Rate

L=Actual Rate is Significantly Lower than the Expected Rate

N=Actual Rate is Not Significantly Different than the Expected Rate

Data Source: Department of Health - Infant, Maternal and Reproductive Health using Florida Vital Statistics data

Low Birthweight - Actual vs Expected

Total Births	Actual LBW Births	Expected LBW Births	Significance
1,034	102	95.60	N
		Actual Percent LBW	Expected Percent LBW
		9.86	9.25

H=Actual Rate is Significantly Higher than the Expected Rate

L=Actual Rate is Significantly Lower than the Expected Rate

N=Actual Rate is Not Significantly Different than the Expected Rate

Data Source: Department of Health - Infant, Maternal and Reproductive Health using Florida Vital Statistics data

MCH Health Problem Analysis for Putnam Calendar Year 2005

Deaths Due to Leading Causes of Infant Mortality

Perinatal Conditions	6	Unintentional Injury	1
Congenital Anomalies	4	Heart Disease	0
Sudden Infant Death Syndrome	7	Other Causes	1

Data Source: Florida Department of Health, Office of Vital Statistics

Infant Mortality

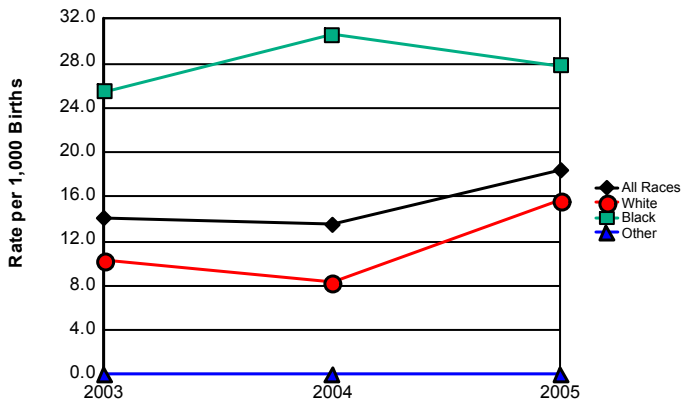
	2003		2004		2005		Comparison to Previous Year	Comparison to Florida Rate
	Putnam	Florida	Putnam	Florida	Putnam	Florida		
Total	13	1,584	13	1,536	19	1,626	Increased	
Rate per 1000	14.1	7.5	13.5	7.0	18.4	7.2	Increased	Above
White *	7	907	6	876	12	882	Increased	
Rate per 1000	10.3	5.8	8.3	5.5	15.7	5.3	Increased	Above
Black *	6	647	7	621	7	652	Same	
Rate per 1000	25.5	13.7	30.6	13.2	27.8	13.6	Decreased	Above
Other *	0	27	0	38	0	91	Same	
Rate per 1000	0.0	3.6	0.0	3.6	0.0	7.8	Same	Below
Hispanic **	3	273	2	242	4	373	Increased	
Rate per 1000	22.9	5.0	13.1	4.1	23.7	5.9	Increased	Above
Non-Hispanic **	10	1,256	11	1,244	15	1,246	Increased	
Rate per 1000	12.6	8.0	13.6	7.8	17.3	7.7	Increased	Above

* Regardless of ethnicity. Does not include persons whose race is unknown.

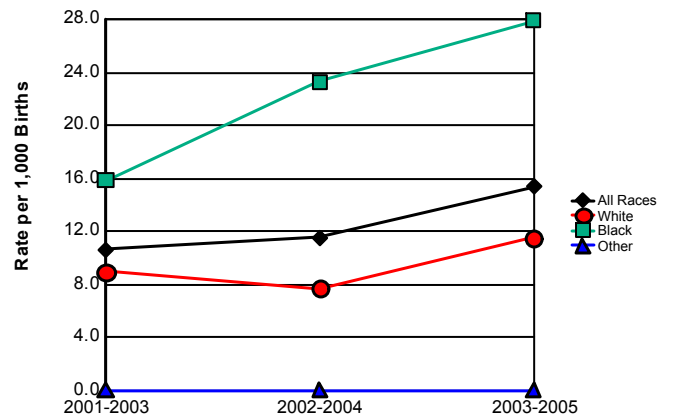
** Regardless of race. Does not include persons whose ethnicity is unknown.

Data Source: Florida Department of Health, Office of Vital Statistics

Infant Mortality Rates



**Infant Mortality Trend
Three-Year Rolling Averages**



	2003	2004	2005
All Races	14.1	13.5	18.4
White	10.3	8.3	15.7
Black	25.5	30.6	27.8
Other	0.0	0.0	0.0

	2001-2003	2002-2004	2003-2005
All Races	10.6	11.5	15.4
White	9.0	7.7	11.5
Black	15.8	23.3	27.9
Other	0.0	0.0	0.0

MCH Health Problem Analysis for Putnam Calendar Year 2005

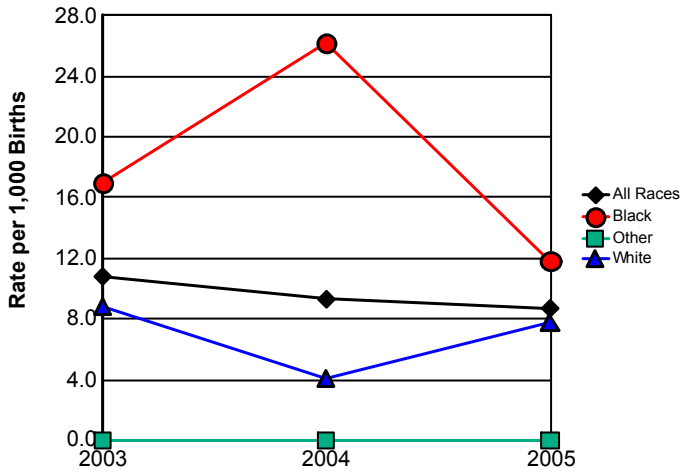
Neonatal Mortality

	2003		2004		2005		Comparison to Previous Year	Comparison to Florida Rate
	Putnam	Florida	Putnam	Florida	Putnam	Florida		
Total	10	1,025	9	989	9	1,024	Same	
Rate per 1000	10.8	4.8	9.3	4.5	8.7	4.5	Decreased	Above
White *	6	584	3	563	6	544	Increased	
Rate per 1000	8.8	3.7	4.1	3.5	7.8	3.3	Increased	Above
Black *	4	420	6	401	3	422	Decreased	
Rate per 1000	17.0	8.9	26.2	8.5	11.9	8.8	Decreased	Above
Other *	0	18	0	24	0	57	Same	
Rate per 1000	0.0	2.4	0.0	2.3	0.0	4.9	Same	Below
Hispanic **	2	186	0	146	2	245	Increased	
Rate per 1000	15.3	3.4	0.0	2.5	11.8	3.8	Increased	Above
Non-Hispanic **	8	792	9	801	7	773	Decreased	
Rate per 1000	10.1	5.0	11.1	5.0	8.1	4.8	Decreased	Above

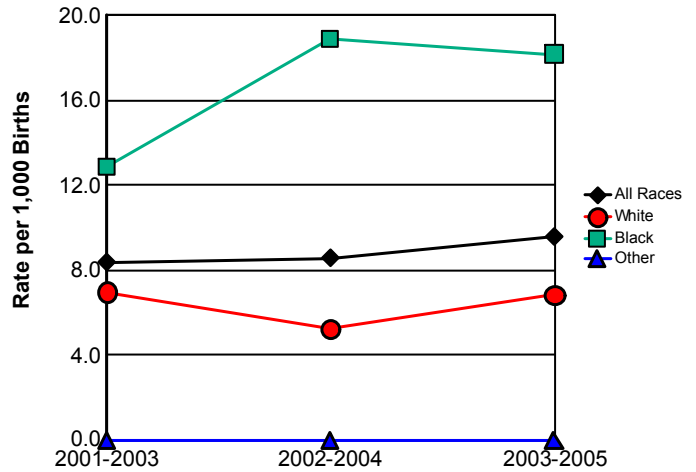
*Regardless of ethnicity. Does not include persons whose race is unknown.
**Regardless of race. Does not include persons whose ethnicity is

Data Source: Florida Department of Health, Office of Vital Statistics

Neonatal Mortality Rates



Neonatal Mortality Trend Three-Year Rolling Averages



	2003	2004	2005
All Races	10.8	9.3	8.7
White	8.8	4.1	7.8
Black	17.0	26.2	11.9
Other	0.0	0.0	0.0

	2001-2003	2002-2004	2003-2005
All Races	8.4	8.6	9.6
White	7.0	5.3	6.9
Black	12.9	18.9	18.2
Other	0.0	0.0	0.0

MCH Health Problem Analysis for Putnam Calendar Year 2005

Postneonatal Mortality

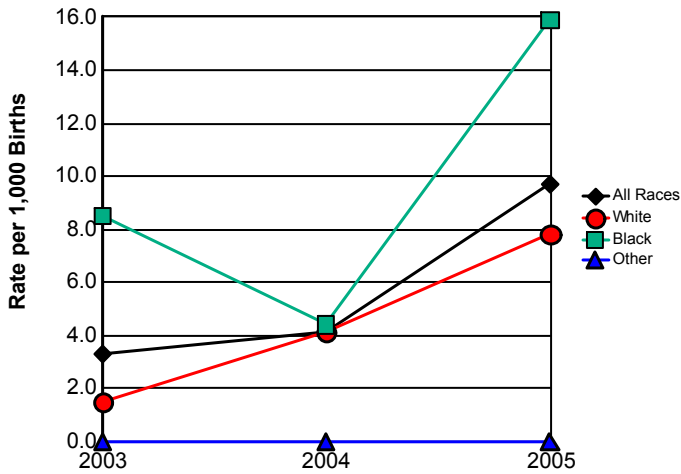
	2003		2004		2005		Comparison to Previous Year	Comparison to Florida Rate
	Putnam	Florida	Putnam	Florida	Putnam	Florida		
Total	3	559	4	547	10	602	Increased	
Rate per 1000	3.3	2.6	4.1	2.5	9.7	2.7	Increased	Above
White *	1	323	3	313	6	338	Increased	
Rate per 1000	1.5	2.1	4.1	2.0	7.8	2.0	Increased	Above
Black *	2	227	1	220	4	230	Increased	
Rate per 1000	8.5	4.8	4.4	4.7	15.9	4.8	Increased	Above
Other *	0	9	0	14	0	34	Same	
Rate per 1000	0.0	1.2	0.0	1.3	0.0	2.9	Same	Below
Hispanic **	1	87	2	96	2	128	Same	
Rate per 1000	7.6	1.6	13.1	1.6	11.8	2.0	Decreased	Above
Non-Hispanic **	2	464	2	443	8	473	Increased	
Rate per 1000	2.5	3.0	2.5	2.8	9.2	2.9	Increased	Above

*Regardless of ethnicity. Does not include persons whose race is unknown.

** Regardless of race. Does not include persons whose ethnicity is unknown.

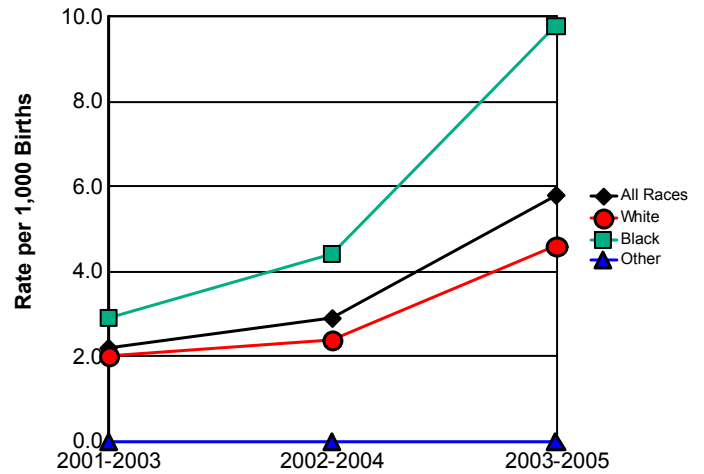
Data Source: Florida Department of Health, Office of Vital Statistics

Postneonatal Mortality Rates



	2003	2004	2005
All Races	3.3	4.1	9.7
White	1.5	4.1	7.8
Black	8.5	4.4	15.9
Other	0.0	0.0	0.0

Postneonatal Mortality Trend Three-Year Rolling Averages



	2001-2003	2002-2004	2003-2005
All Races	2.2	2.9	5.8
White	2.0	2.4	4.6
Black	2.9	4.4	9.8
Other	0.0	0.0	0.0

MCH Health Problem Analysis for Putnam Calendar Year 2005

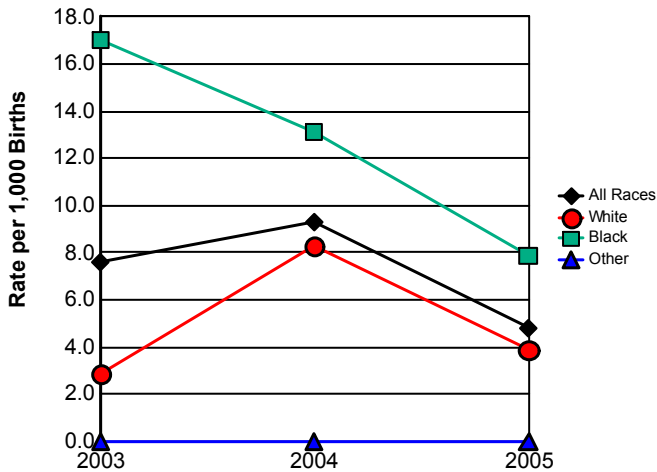
Fetal Mortality

	2003		2004		2005		Comparison to Previous Year	Comparison to Florida Rate
	Putnam	Florida	Putnam	Florida	Putnam	Florida		
Total	7	1,604	9	1,701	5	1,650	Decreased	
Rate per 1000	7.6	7.6	9.3	7.8	4.8	7.3	Decreased	Below
White *	2	912	6	966	3	938	Decreased	
Rate per 1000	2.9	5.8	8.3	6.0	3.9	5.6	Decreased	Below
Black *	4	643	3	680	2	649	Decreased	
Rate per 1000	17.0	13.6	13.1	14.5	7.9	13.5	Decreased	Below
Other *	0	35	0	43	0	39	Same	
Rate per 1000	0.0	4.7	0.0	4.1	0.0	3.3	Same	Below
Hispanic **	0	264	2	328	2	309	Same	
Rate per 1000	0.0	4.8	13.1	5.6	11.8	4.8	Decreased	Above
Non-Hispanic **	6	1,220	7	1,243	3	1,172	Decreased	
Rate per 1000	7.6	7.8	8.6	7.8	3.5	7.3	Decreased	Below

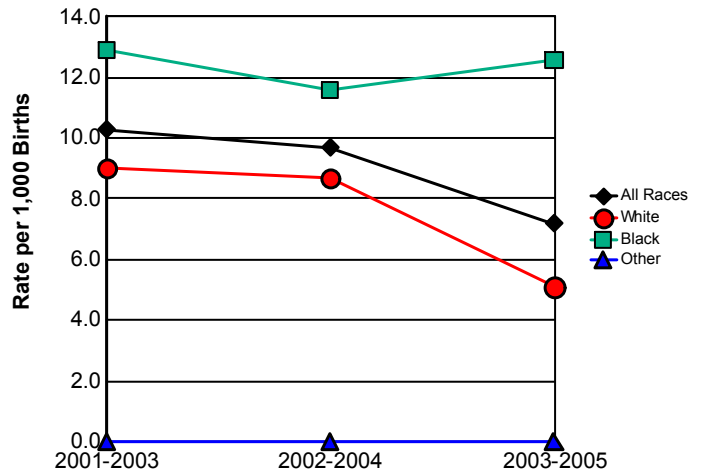
* Regardless of ethnicity. Does not include persons whose race is unknown.

Data Source: Florida Department of Health, Office of Vital Statistics

Fetal Mortality Rates



Fetal Mortality Trend Three-Year Rolling Averages



	2003	2004	2005
All Races	7.6	9.3	4.8
White	2.9	8.3	3.9
Black	17.0	13.1	7.9
Other	0.0	0.0	0.0

	2001-2003	2002-2004	2003-2005
All Races	10.3	9.7	7.2
White	9.0	8.7	5.1
Black	12.9	11.6	12.6
Other	0.0	0.0	0.0

MCH Health Problem Analysis for Putnam Calendar Year 2005

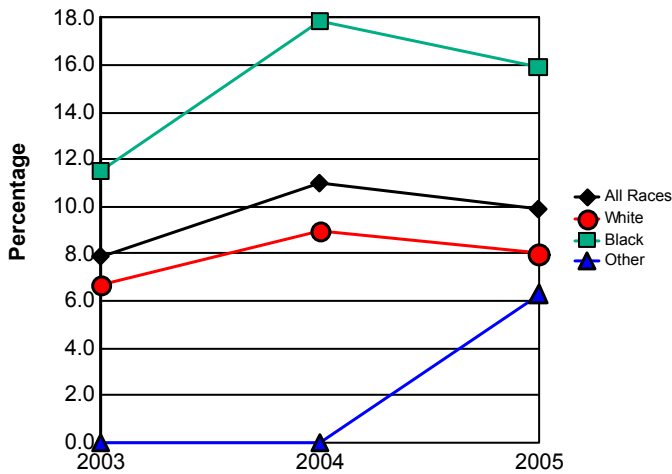
Low Birthweight

	2003		2004		2005		Comparison to Previous Year	Comparison to Florida Rate
	Putnam	Florida	Putnam	Florida	Putnam	Florida		
Total	73	18,047	106	18,670	102	19,802	Decreased	
Percentage	7.9	8.5	11.0	8.6	9.9	8.8	Decreased	Above
White *	46	11,190	65	11,570	61	12,221	Decreased	
Percentage	6.7	7.1	9.0	7.2	8.0	7.4	Decreased	Above
Black *	27	6,203	41	6,134	40	6,521	Decreased	
Percentage	11.5	13.2	17.9	13.1	15.9	13.6	Decreased	Above
Other *	0	624	0	923	1	1,025	Increased	
Percentage	0.0	8.4	0.0	8.8	6.3	8.8	Increased	Below
Hispanic **	12	3,795	13	4,100	10	4,493	Decreased	
Percentage	9.2	6.9	8.5	7.0	5.9	7.0	Decreased	Below
Non-Hispanic **	61	14,212	92	14,459	92	15,210	Same	
Percentage	7.7	9.0	11.4	9.1	10.6	9.4	Decreased	Above

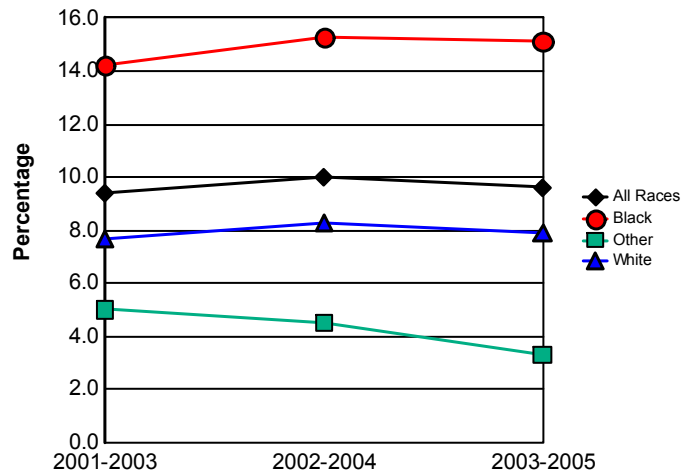
* Regardless of ethnicity. Does not include persons whose race is unknown.

Data Source: Florida Department of Health, Office of Vital Statistics

Percentage of Low Birthweight Births



Low Birthweight Births Trend Three-Year Rolling Averages



	2003	2004	2005
All Races	7.9	11.0	9.9
White	6.7	9.0	8.0
Black	11.5	17.9	15.9
Other	0.0	0.0	6.3

	2001-2003	2002-2004	2003-2005
All Races	9.4	10.0	9.6
White	7.7	8.3	7.9
Black	14.2	15.3	15.1
Other	5.0	4.5	3.3

MCH Health Problem Analysis for Putnam Calendar Year 2005

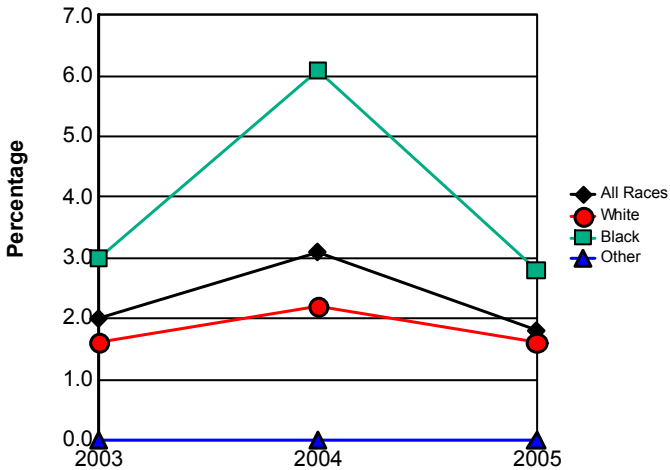
Very Low Birthweight

	2003		2004		2005		Comparison to Previous Year	Comparison to Florida Rate
	Putnam	Florida	Putnam	Florida	Putnam	Florida		
Total	18	3,319	30	3,491	19	3,637	Decreased	
Percentage	2.0	1.6	3.1	1.6	1.8	1.6	Decreased	Above
White *	11	1,841	16	1,862	12	1,960	Decreased	
Percentage	1.6	1.2	2.2	1.2	1.6	1.2	Decreased	Above
Black *	7	1,365	14	1,470	7	1,507	Decreased	
Percentage	3.0	2.9	6.1	3.1	2.8	3.1	Decreased	Below
Other *	0	103	0	139	0	162	Same	
Percentage	0.0	1.4	0.0	1.3	0.0	1.4	Same	Below
Hispanic **	0	0	0	0	0	0	Same	
Percentage	0.0	0.0	0.0	0.0	0.0	0.0	Same	Same
Non-Hispanic **	15	2,621	28	2,775	16	2,826	Decreased	
Percentage	1.9	1.7	3.5	1.7	1.8	1.7	Decreased	Above

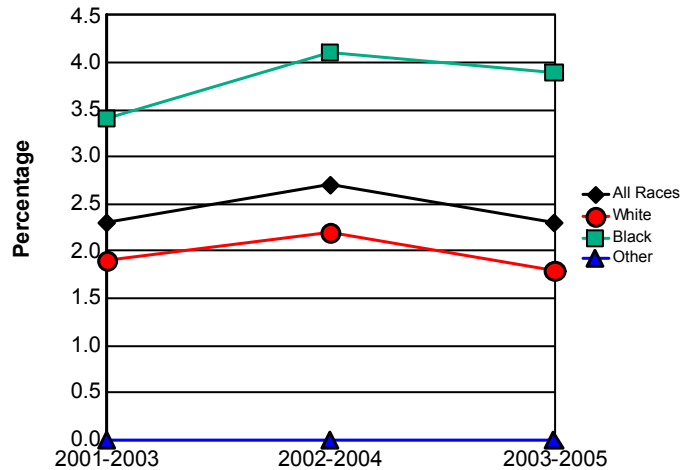
*Regardless of ethnicity. Does not include persons whose race is unknown.

Data Source: Florida Department of Health, Office of Vital Statistics

Percentage of Very Low Birthweight Births



Very Low Birthweight Trend Three-Year Rolling Averages



	2003	2004	2005
All Races	2.0	3.1	1.8
White	1.6	2.2	1.6
Black	3.0	6.1	2.8
Other	0.0	0.0	0.0

	2001-2003	2002-2004	2003-2005
All Races	2.3	2.7	2.3
White	1.9	2.2	1.8
Black	3.4	4.1	3.9
Other	0.0	0.0	0.0

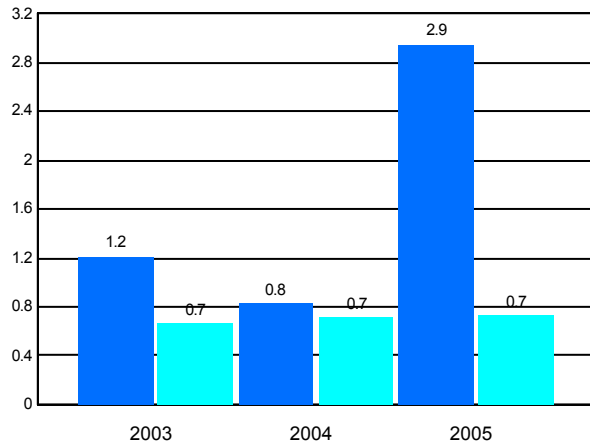
MCH Health Problem Analysis for Putnam Calendar Year 2005

Births to Teens

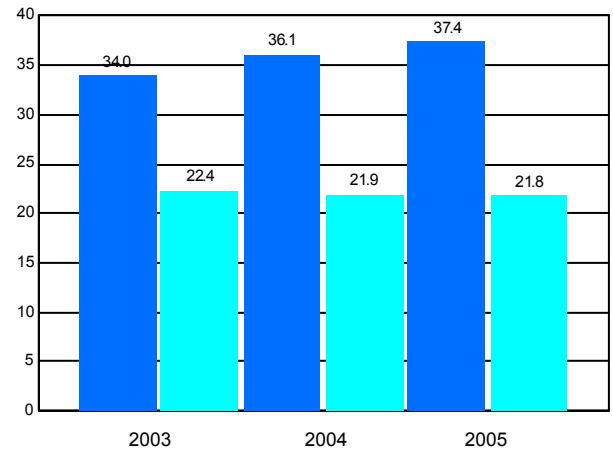
	2003		2004		2005		Comparison to Previous
	Putnam	Florida	Putnam	Florida	Putnam	Florida	
Mothers 10-14							
Number	3	362	2	404	7	415	
Rate per 1,000	1.2	0.7	0.8	0.7	2.9	0.7	Increased
Mothers 15-17							
Number	50	7,227	54	7,436	57	7,590	
Rate per 1,000	34.0	22.4	36.1	21.9	37.4	21.8	Increased
Percentage of Repeat Births 15-19	15.9	15.2	17.7	15.4	20.1	16.1	Increased

Data Source: Florida Department of Health, Office of Vital Statistics

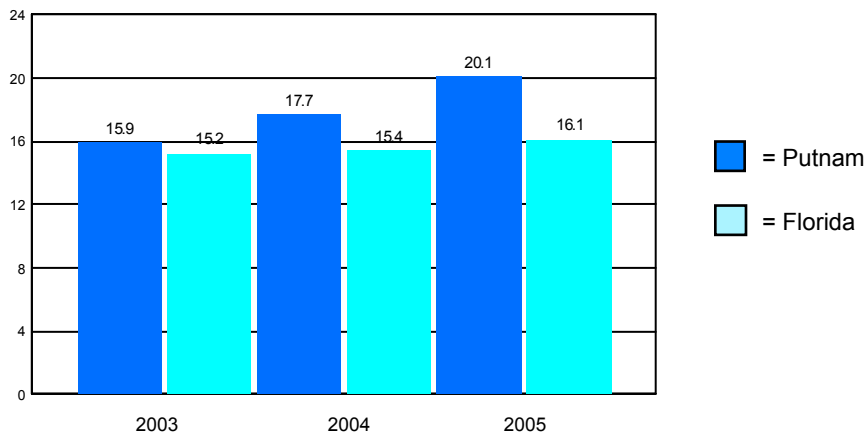
Births to Teens 10-14



Births to Teens 15-17



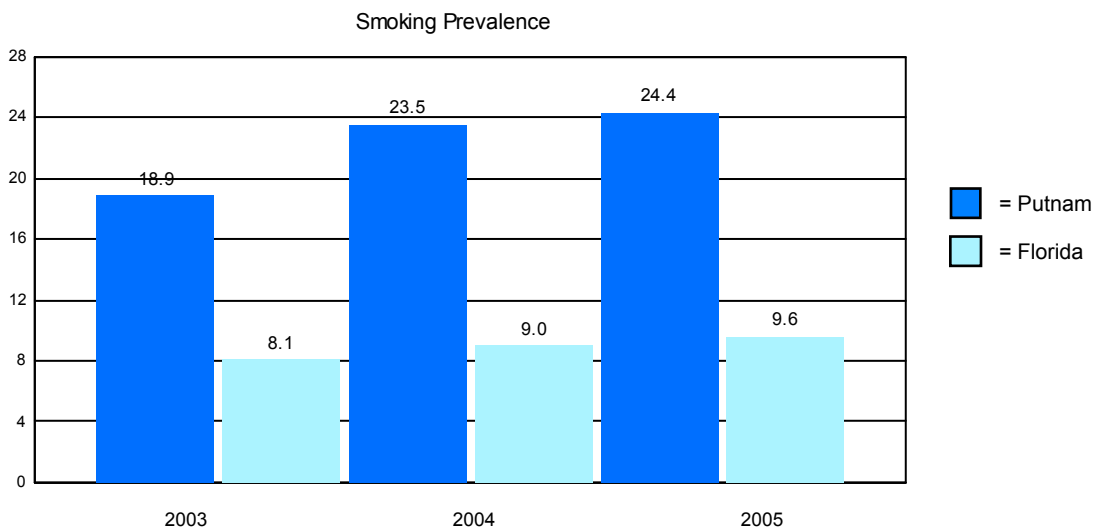
Repeat Births to Teens 15-19



MCH Health Problem Analysis for Putnam Calendar Year 2005

Reported Smoking Prevalence in Pregnancy

	Mothers Who Smoked	Percentage of Births
2003		
Putnam	174	18.85
Florida	17,165	8.09
2004		
Putnam	227	23.52
Florida	19,668	9.02
2005		
Putnam	252	24.37
Florida	21,687	9.59



Data Source: Florida Department of Health, Office of Vital Statistics

Pediatric AIDS Cases Among Persons 0 - 4 Years of Age

	2003	2004	2005
Putnam	0	0	0
Florida	17	11	6

Data Source: Florida Department of Health, Bureau of HIV/AIDS

CHD Prenatal Care Clients Offered HIV Testing

2003		2004		2005	
Putnam	Florida	Putnam	Florida	Putnam	Florida
98.01%	86.33%	97.62%	86.34%	96.17%	83.60%

**MCH Health Problem Analysis for
Putnam
Calendar Year 2005**

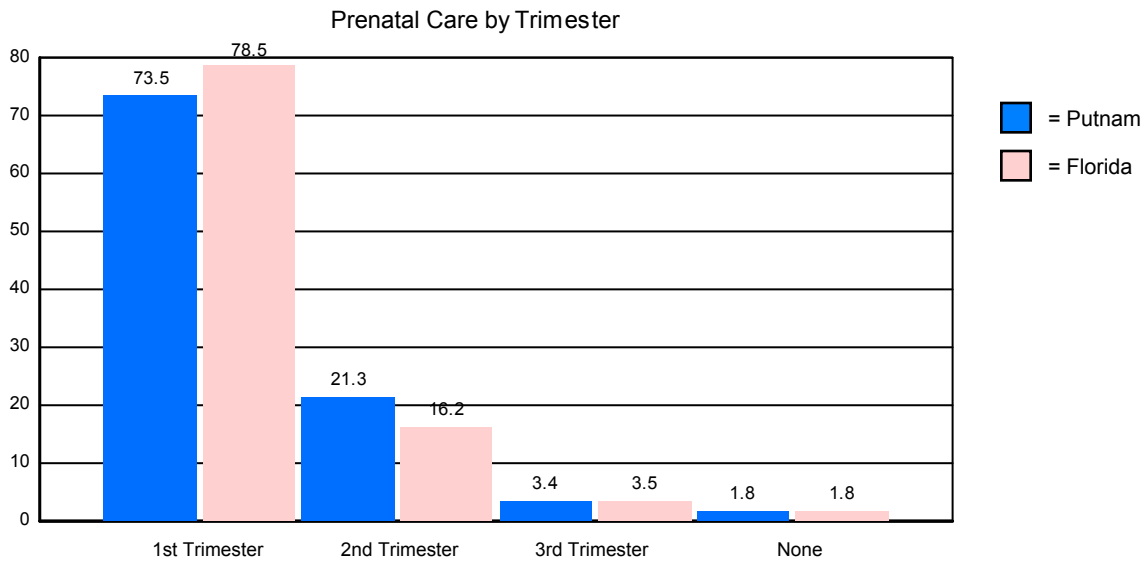
WIC Services

	Persons Eligible for WIC	Percentage Served by WIC
2003		
Putnam	3,291	71.62
Florida	550,426	60.72
2004		
Putnam	3,210	70.90
Florida	538,421	64.27
2005		
Putnam	3,250	80.65
Florida	556,140	67.27

Data Source: Florida Department of Health, WIC & Nutrition Services

Prenatal Care by Trimester of Pregnancy

	1st Trimester	2nd Trimester	3rd Trimester	No Prenatal Care
Putnam	73.46%	21.30%	3.42%	1.82%
Florida	78.54%	16.19%	3.50%	1.76%



Data Source: Florida Department of Health, Office of Vital Statistics

Immunizations Among 2-Year-Old CHD Clients

	Number Immunized		Percentage Immunized	
	Putnam	Florida	Putnam	Florida
2003	68	16,675	70.10	64.22
2004	86	18,481	87.76	80.17
2005	79	16,750	95.18	86.02

Data Source: Florida Department of Health, Bureau of Immunizations

**MCH Health Problem Analysis for
Putnam
Calendar Year 2005**

Healthy Start Prenatal Screening and Services

	2003		2004		2005	
	Putnam	Florida	Putnam	Florida	Putnam	Florida
Offered Rate %	105.75	85.76	100.94	87.41	96.01	91.17
Screening Rate %	69.20	51.24	76.35	59.73	76.75	67.36
Consent Rate %	65.44	59.74	75.64	68.33	79.94	73.89

	Number		Percentage	
	Putnam	Florida	Putnam	Florida
Estimated Number of Pregnant Women	1,028	225,115		
Offered Screen	987	205,231	96.01	91.17
Consenting to Screen	789	151,646	79.94	73.89
Positive Screen + Referred	435	96,528	55.13	63.65
Consenting to HS Participation	422	91,004	97.01	94.28
Received Initial Contact	179	57,381	42.42	63.05
Need Initial Assessment	109	33,073	60.89	57.64
Received Initial Assessment	89	30,335	81.65	91.72
Need Ongoing Care Coordination	76	32,861	42.46	57.27

	Putnam			Florida	
	Clients	Percentage of Clients	Encounters per Client	Services per Encounter	Percentage of Clients
Total Receiving HS Prenatal Service	564		6.07	3.92	
Total IC/IA Only	112	19.86	4.15	2.75	17.58
Total IC/IA/Other HS Service	15	2.66	4.07	4.70	5.44
Track or Not Face-to-Face	83	14.72	5.39	3.14	18.49
Face-to-Face, without FSP	92	16.31	11.64	5.01	15.55
Face-to-Face, with FSP	34	6.03	16.24	5.17	3.89
Unable to Locate	116	20.57	4.21	2.65	12.97
Unable to Complete Initial Contact	47	8.33	4.00	3.21	15.83
Unable to Complete Initial Assessment	4	0.71	1.00	1.00	0.21

	Putnam		
	Clients	Services	Services/Client
Nutritional Assessment and Counseling	0	0	0.00
Psychosocial Counseling	20	1,413	70.65
Parenting Education	42	219	5.21
Childbirth Education	54	531	9.83
Breastfeeding Education	80	220	2.75
Smoking Cessation Counseling	34	116	3.41
Interconceptional Education & Counseling	16	62	3.88

Pregnant Drug-Abusing Women

	Clients	Encounters/Client	Services/Encounter
Putnam	13	9.23	6.23
Florida	4,271	7.30	3.80

**MCH Health Problem Analysis for
Putnam
Calendar Year 2005**

Healthy Start Infant Screening and Services

	2003		2004		2005	
	Putnam	Florida	Putnam	Florida	Putnam	Florida
Screening Rate %	56.18	70.85	57.71	69.62	66.05	72.94

	Number		Percentage	
	Putnam	Florida	Putnam	Florida
Total Number of Births	1,028	225,115		
Consenting to Screen	679	164,203	66.05	72.94
Positive Screen + Referred	159	24,124	23.42	14.69
Consenting to HS Participation	139	20,697	87.42	85.79
Received Initial Contact	128	31,048	92.09	150.01
Need Initial Assessment	62	16,973	48.44	54.67
Received Initial Assessment	54	15,732	87.10	92.69
Need Ongoing Care Coordination	49	15,590	38.28	50.21

	Putnam				Florida
	Clients	Percentage of Clients	Encounters per Client	Services per Encounter	Percentage of Clients
Total Receiving HS Infant Service	437		5.28	3.76	
Total IC/IA Only	81	18.54	3.43	2.60	18.99
Total IC/IA/Other HS Service	5	1.14	3.80	3.63	3.55
Track or Not Face-to-Face	85	19.45	5.55	3.68	14.16
Face-to-Face, without FSP	81	18.54	10.91	4.91	13.43
Face-to-Face, with FSP	10	2.29	14.70	4.33	4.72
Unable to Locate	59	13.50	3.90	2.33	7.50
Unable to Complete Initial Contact	43	9.84	3.07	1.85	26.86
Unable to Complete Initial Assessment	14	3.20	1.07	1.20	0.21

	Putnam		
	Clients	Services	Services/Client
Nutritional Assessment and Counseling	0	0	0.00
Psychosocial Counseling	13	823	63.31
Parenting Education	69	511	7.41
Childbirth Education	0	0	0.00
Breastfeeding Education	16	35	2.19
Smoking Cessation Counseling	16	47	2.94
Interconceptional Education & Counseling	23	64	2.78

Substance-exposed Newborns

	Clients	Encounters/Client	Services/Encounter
Putnam	4	3.50	3.86
Florida	3,819	11.32	3.91