

**MCH Health Problem Analysis for  
Palm Beach  
Calendar Year 2005**

**Population**

	Palm Beach		Florida	
	Number	Percentage	Number	Percentage
Total	1,272,335		18,018,497	
White	1,033,245	81.21	14,581,665	80.93
Nonwhite	239,090	18.79	3,436,832	19.07
Black	208,226	16.37	2,949,668	16.37
Other	30,864	2.43	487,164	2.70

Data Source: Population Estimates from the Florida Legislature, Office of Economic & Demographic Research

**Births**

	Palm Beach		Florida	
	Number	Percentage	Number	Percentage
Total	15,160		226,219	
White *	10,562	69.67	166,181	73.46
Black *	3,788	24.99	47,957	21.20
Other *	795	5.24	11,651	5.15
Hispanic **	4,552	30.03	63,757	28.18
Non-Hispanic **	10,576	69.76	161,615	71.44

\*Regardless of ethnicity. Does not include persons whose race is unknown.

\*\*Regardless of race. Does not include persons whose ethnicity is unknown.

Data Source: Florida Department of Health, Office of Vital Statistics

**Infant Deaths - Actual vs Expected**

Total Births	Actual Infant Deaths	Expected Infant Deaths	Significance
15,160	96	111.90	N
		Actual Infant Death Rate per 1,000 Births	Expected Infant Death Rate per 1,000 Births
		6.33	7.38

H=Actual Rate is Significantly Higher than the Expected Rate

L=Actual Rate is Significantly Lower than the Expected Rate

N=Actual Rate is Not Significantly Different than the Expected Rate

Data Source: Department of Health - Infant, Maternal and Reproductive Health using Florida Vital Statistics data

**Low Birthweight - Actual vs Expected**

Total Births	Actual LBW Births	Expected LBW Births	Significance
15,160	1,395	1,358.20	N
		Actual Percent LBW	Expected Percent LBW
		9.20	8.96

H=Actual Rate is Significantly Higher than the Expected Rate

L=Actual Rate is Significantly Lower than the Expected Rate

N=Actual Rate is Not Significantly Different than the Expected Rate

Data Source: Department of Health - Infant, Maternal and Reproductive Health using Florida Vital Statistics data

# MCH Health Problem Analysis for Palm Beach Calendar Year 2005

## Deaths Due to Leading Causes of Infant Mortality

Perinatal Conditions	42	Unintentional Injury	13
Congenital Anomalies	14	Heart Disease	0
Sudden Infant Death Syndrome	3	Other Causes	24

Data Source: Florida Department of Health, Office of Vital Statistics

## Infant Mortality

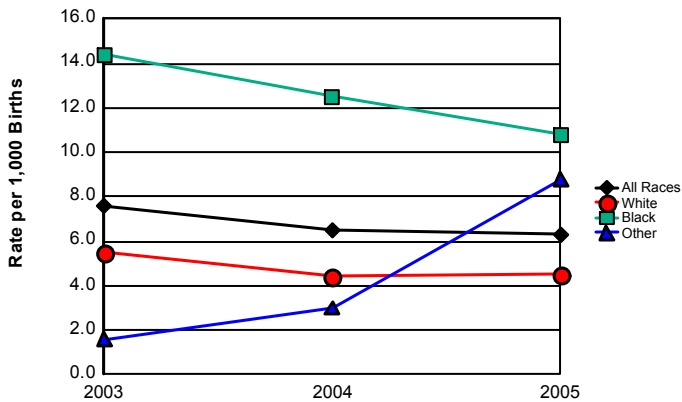
	2003		2004		2005		Comparison to Previous Year	Comparison to Florida Rate
	Palm Beach	Florida	Palm Beach	Florida	Palm Beach	Florida		
<b>Total</b>	112	1,584	97	1,536	96	1,626	Decreased	
<b>Rate per 1000</b>	7.6	7.5	6.5	7.0	6.3	7.2	Decreased	Below
<b>White *</b>	56	907	46	876	48	882	Increased	
<b>Rate per 1000</b>	5.5	5.8	4.4	5.5	4.5	5.3	Increased	Below
<b>Black *</b>	55	647	49	621	41	652	Decreased	
<b>Rate per 1000</b>	14.4	13.7	12.5	13.2	10.8	13.6	Decreased	Below
<b>Other *</b>	1	27	2	38	7	91	Increased	
<b>Rate per 1000</b>	1.6	3.6	3.0	3.6	8.8	7.8	Increased	Above
<b>Hispanic **</b>	20	273	18	242	27	373	Increased	
<b>Rate per 1000</b>	5.2	5.0	4.3	4.1	5.9	5.9	Increased	Same
<b>Non-Hispanic **</b>	90	1,256	77	1,244	69	1,246	Decreased	
<b>Rate per 1000</b>	8.3	8.0	7.1	7.8	6.5	7.7	Decreased	Below

\* Regardless of ethnicity. Does not include persons whose race is unknown.

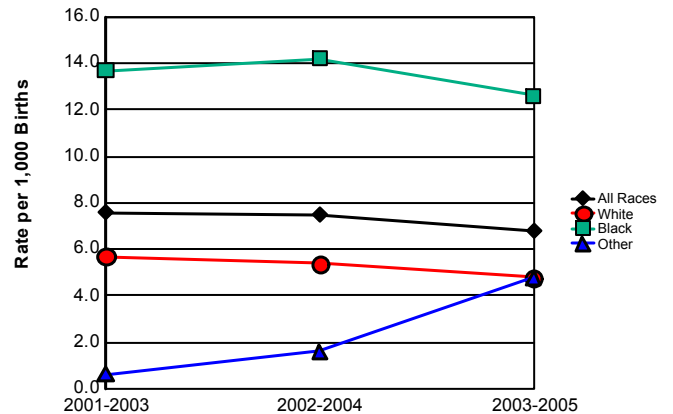
Data Source: Florida Department of Health, Office of Vital Statistics

\*\* Regardless of race. Does not include persons whose ethnicity is unknown.

**Infant Mortality Rates**



**Infant Mortality Trend  
Three-Year Rolling Averages**



	2003	2004	2005
All Races	7.6	6.5	6.3
White	5.5	4.4	4.5
Black	14.4	12.5	10.8
Other	1.6	3.0	8.8

	2001-2003	2002-2004	2003-2005
All Races	7.6	7.5	6.8
White	5.7	5.4	4.8
Black	13.7	14.2	12.6
Other	0.6	1.6	4.8

# MCH Health Problem Analysis for Palm Beach Calendar Year 2005

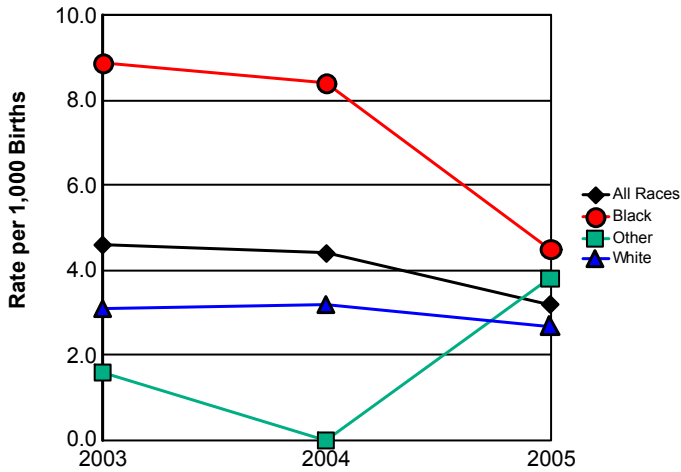
## Neonatal Mortality

	2003		2004		2005		Comparison to Previous Year	Comparison to Florida Rate
	Palm Beach	Florida	Palm Beach	Florida	Palm Beach	Florida		
<b>Total</b>	67	1,025	66	989	48	1,024	Decreased	
<b>Rate per 1000</b>	4.6	4.8	4.4	4.5	3.2	4.5	Decreased	Below
<b>White *</b>	32	584	33	563	28	544	Decreased	
<b>Rate per 1000</b>	3.1	3.7	3.2	3.5	2.7	3.3	Decreased	Below
<b>Black *</b>	34	420	33	401	17	422	Decreased	
<b>Rate per 1000</b>	8.9	8.9	8.4	8.5	4.5	8.8	Decreased	Below
<b>Other *</b>	1	18	0	24	3	57	Increased	
<b>Rate per 1000</b>	1.6	2.4	0.0	2.3	3.8	4.9	Increased	Below
<b>Hispanic **</b>	11	186	12	146	14	245	Increased	
<b>Rate per 1000</b>	2.9	3.4	2.9	2.5	3.1	3.8	Increased	Below
<b>Non-Hispanic **</b>	55	792	53	801	34	773	Decreased	
<b>Rate per 1000</b>	5.1	5.0	4.9	5.0	3.2	4.8	Decreased	Below

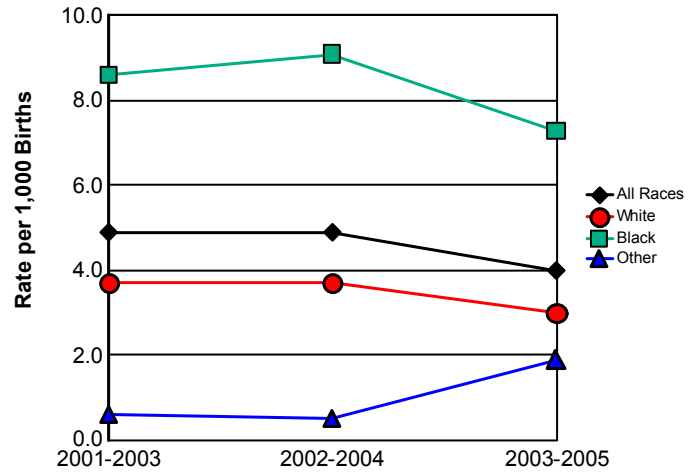
\*Regardless of ethnicity. Does not include persons whose race is unknown.  
\*\*Regardless of race. Does not include persons whose ethnicity is

Data Source: Florida Department of Health, Office of Vital Statistics

### Neonatal Mortality Rates



### Neonatal Mortality Trend Three-Year Rolling Averages



	2003	2004	2005
All Races	4.6	4.4	3.2
White	3.1	3.2	2.7
Black	8.9	8.4	4.5
Other	1.6	0.0	3.8

	2001-2003	2002-2004	2003-2005
All Races	4.9	4.9	4.0
White	3.7	3.7	3.0
Black	8.6	9.1	7.3
Other	0.6	0.5	1.9

# MCH Health Problem Analysis for Palm Beach Calendar Year 2005

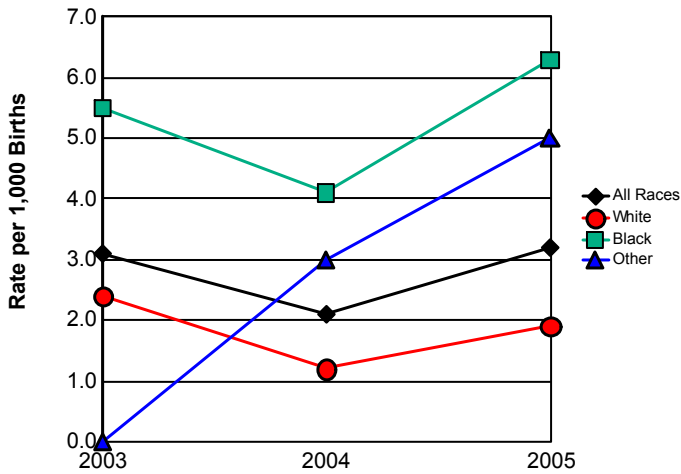
## Postneonatal Mortality

	2003		2004		2005		Comparison to Previous Year	Comparison to Florida Rate
	Palm Beach	Florida	Palm Beach	Florida	Palm Beach	Florida		
<b>Total</b>	45	559	31	547	48	602	Increased	
<b>Rate per 1000</b>	3.1	2.6	2.1	2.5	3.2	2.7	Increased	Above
<b>White *</b>	24	323	13	313	20	338	Increased	
<b>Rate per 1000</b>	2.4	2.1	1.2	2.0	1.9	2.0	Increased	Below
<b>Black *</b>	21	227	16	220	24	230	Increased	
<b>Rate per 1000</b>	5.5	4.8	4.1	4.7	6.3	4.8	Increased	Above
<b>Other *</b>	0	9	2	14	4	34	Increased	
<b>Rate per 1000</b>	0.0	1.2	3.0	1.3	5.0	2.9	Increased	Above
<b>Hispanic **</b>	9	87	6	96	13	128	Increased	
<b>Rate per 1000</b>	2.3	1.6	1.4	1.6	2.9	2.0	Increased	Above
<b>Non-Hispanic **</b>	35	464	24	443	35	473	Increased	
<b>Rate per 1000</b>	3.2	3.0	2.2	2.8	3.3	2.9	Increased	Above

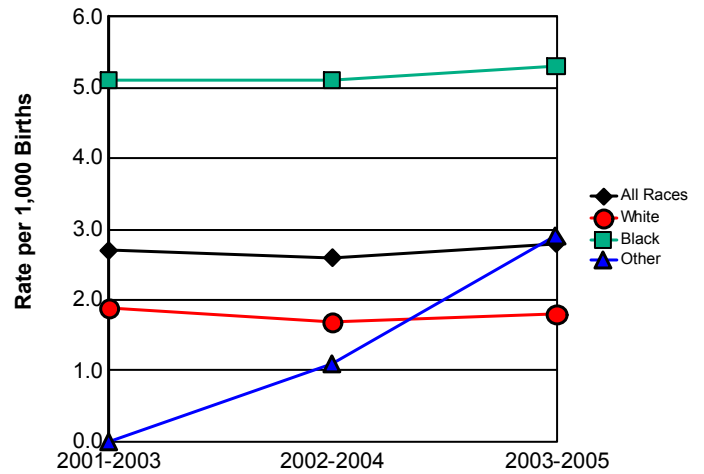
\*Regardless of ethnicity. Does not include persons whose race is unknown.  
\*\* Regardless of race. Does not include persons whose ethnicity is unknown.

Data Source: Florida Department of Health, Office of Vital Statistics

### Postneonatal Mortality Rates



### Postneonatal Mortality Trend Three-Year Rolling Averages



	2003	2004	2005
All Races	3.1	2.1	3.2
White	2.4	1.2	1.9
Black	5.5	4.1	6.3
Other	0.0	3.0	5.0

	2001-2003	2002-2004	2003-2005
All Races	2.7	2.6	2.8
White	1.9	1.7	1.8
Black	5.1	5.1	5.3
Other	0.0	1.1	2.9

# MCH Health Problem Analysis for Palm Beach Calendar Year 2005

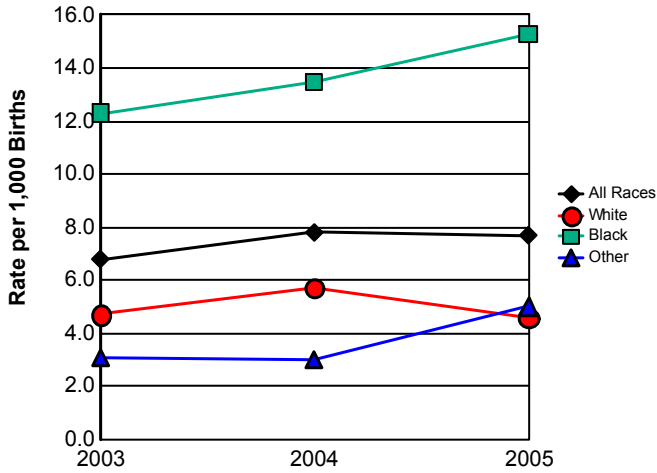
## Fetal Mortality

	2003		2004		2005		Comparison to Previous Year	Comparison to Florida Rate
	Palm Beach	Florida	Palm Beach	Florida	Palm Beach	Florida		
<b>Total</b>	100	1,604	117	1,701	116	1,650	Decreased	
<b>Rate per 1000</b>	6.8	7.6	7.8	7.8	7.7	7.3	Decreased	Above
<b>White *</b>	48	912	59	966	49	938	Decreased	
<b>Rate per 1000</b>	4.7	5.8	5.7	6.0	4.6	5.6	Decreased	Below
<b>Black *</b>	47	643	53	680	58	649	Increased	
<b>Rate per 1000</b>	12.3	13.6	13.5	14.5	15.3	13.5	Increased	Above
<b>Other *</b>	2	35	2	43	4	39	Increased	
<b>Rate per 1000</b>	3.1	4.7	3.0	4.1	5.0	3.3	Increased	Above
<b>Hispanic **</b>	13	264	19	328	23	309	Increased	
<b>Rate per 1000</b>	3.4	4.8	4.6	5.6	5.1	4.8	Increased	Above
<b>Non-Hispanic **</b>	83	1,220	90	1,243	86	1,172	Decreased	
<b>Rate per 1000</b>	7.7	7.8	8.3	7.8	8.1	7.3	Decreased	Above

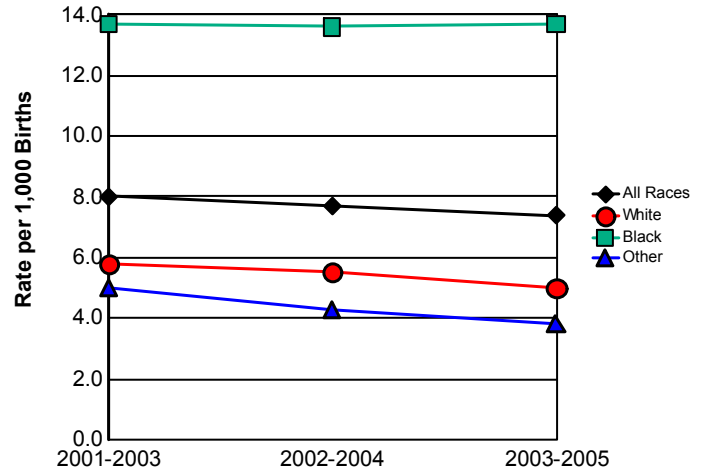
\* Regardless of ethnicity. Does not include persons whose race is unknown.

Data Source: Florida Department of Health, Office of Vital Statistics

### Fetal Mortality Rates



### Fetal Mortality Trend Three-Year Rolling Averages



	2003	2004	2005
All Races	6.8	7.8	7.7
White	4.7	5.7	4.6
Black	12.3	13.5	15.3
Other	3.1	3.0	5.0

	2001-2003	2002-2004	2003-2005
All Races	8.0	7.7	7.4
White	5.8	5.5	5.0
Black	13.7	13.6	13.7
Other	5.0	4.3	3.8

# MCH Health Problem Analysis for Palm Beach Calendar Year 2005

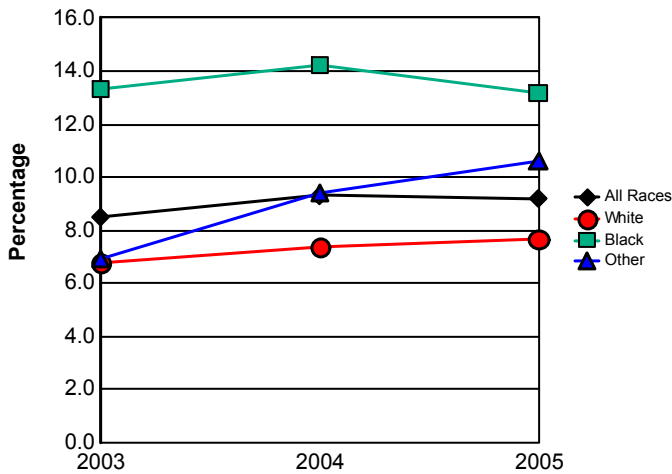
## Low Birthweight

	2003		2004		2005		Comparison to Previous Year	Comparison to Florida Rate
	Palm Beach	Florida	Palm Beach	Florida	Palm Beach	Florida		
<b>Total</b>	1,245	18,047	1,390	18,670	1,395	19,802	Increased	
<b>Percentage</b>	8.5	8.5	9.3	8.6	9.2	8.8	Decreased	Above
<b>White *</b>	695	11,190	769	11,570	811	12,221	Increased	
<b>Percentage</b>	6.8	7.1	7.4	7.2	7.7	7.4	Increased	Above
<b>Black *</b>	506	6,203	557	6,134	499	6,521	Decreased	
<b>Percentage</b>	13.3	13.2	14.2	13.1	13.2	13.6	Decreased	Below
<b>Other *</b>	44	624	62	923	84	1,025	Increased	
<b>Percentage</b>	6.9	8.4	9.4	8.8	10.6	8.8	Increased	Above
Hispanic **	271	3,795	313	4,100	350	4,493	Increased	
<b>Percentage</b>	7.1	6.9	7.5	7.0	7.7	7.0	Increased	Above
Non-Hispanic **	974	14,212	1,072	14,459	1,042	15,210	Decreased	
<b>Percentage</b>	9.0	9.0	9.9	9.1	9.9	9.4	Same	Above

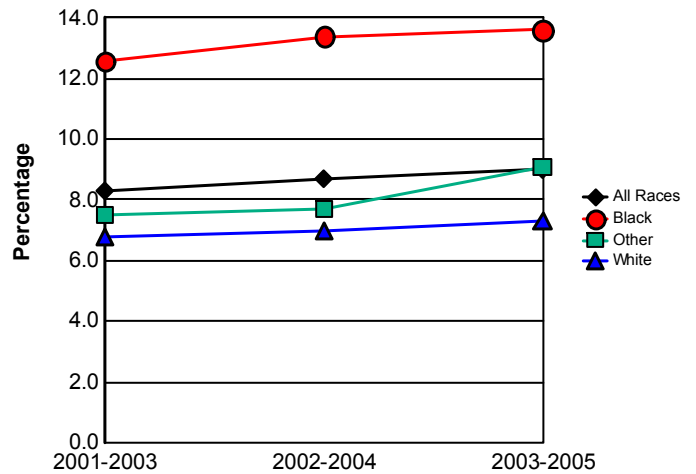
\* Regardless of ethnicity. Does not include persons whose race is unknown.

Data Source: Florida Department of Health, Office of Vital Statistics

**Percentage of Low Birthweight Births**



**Low Birthweight Births Trend Three-Year Rolling Averages**



	2003	2004	2005
All Races	8.5	9.3	9.2
White	6.8	7.4	7.7
Black	13.3	14.2	13.2
Other	6.9	9.4	10.6

	2001-2003	2002-2004	2003-2005
All Races	8.3	8.7	9.0
White	6.8	7.0	7.3
Black	12.6	13.4	13.6
Other	7.5	7.7	9.1

# MCH Health Problem Analysis for Palm Beach Calendar Year 2005

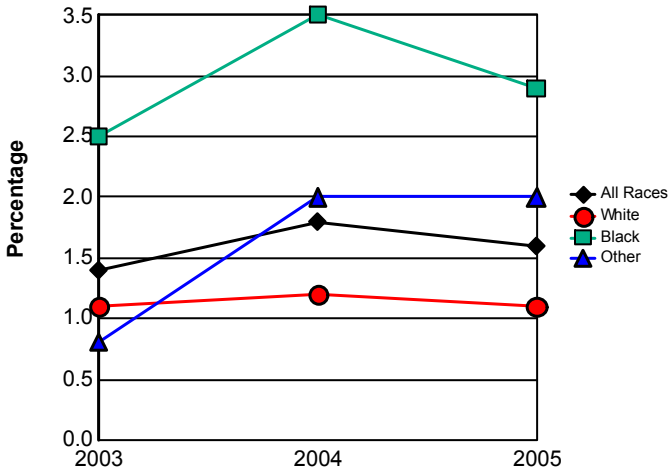
## Very Low Birthweight

	2003		2004		2005		Comparison to Previous Year	Comparison to Florida Rate
	Palm Beach	Florida	Palm Beach	Florida	Palm Beach	Florida		
<b>Total</b>	208	3,319	272	3,491	244	3,637	Decreased	
<b>Percentage</b>	1.4	1.6	1.8	1.6	1.6	1.6	Decreased	Same
<b>White *</b>	108	1,841	120	1,862	116	1,960	Decreased	
<b>Percentage</b>	1.1	1.2	1.2	1.2	1.1	1.2	Decreased	Below
<b>Black *</b>	95	1,365	138	1,470	111	1,507	Decreased	
<b>Percentage</b>	2.5	2.9	3.5	3.1	2.9	3.1	Decreased	Below
<b>Other *</b>	5	103	13	139	16	162	Increased	
<b>Percentage</b>	0.8	1.4	2.0	1.3	2.0	1.4	Same	Above
Hispanic **	0	0	0	0	0	0	Same	
<b>Percentage</b>	0.0	0.0	0.0	0.0	0.0	0.0	Same	Same
Non-Hispanic **	164	2,621	220	2,775	190	2,826	Decreased	
<b>Percentage</b>	1.5	1.7	2.0	1.7	1.8	1.7	Decreased	Above

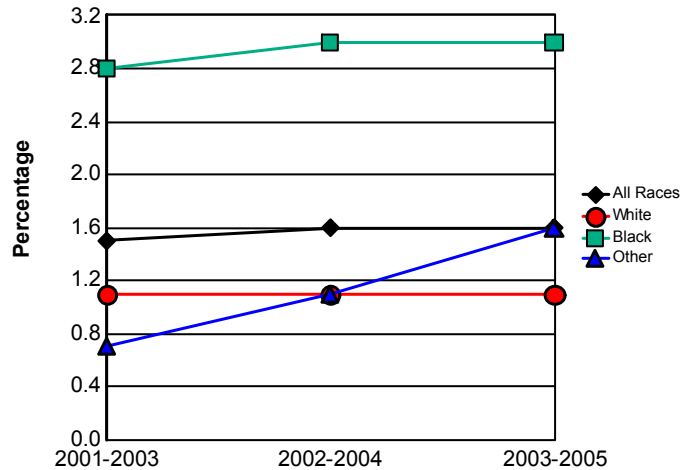
\*Regardless of ethnicity. Does not include persons whose race is unknown.

Data Source: Florida Department of Health, Office of Vital Statistics

**Percentage of Very Low Birthweight Births**



**Very Low Birthweight Trend Three-Year Rolling Averages**



	2003	2004	2005
All Races	1.4	1.8	1.6
White	1.1	1.2	1.1
Black	2.5	3.5	2.9
Other	0.8	2.0	2.0

	2001-2003	2002-2004	2003-2005
All Races	1.5	1.6	1.6
White	1.1	1.1	1.1
Black	2.8	3.0	3.0
Other	0.7	1.1	1.6

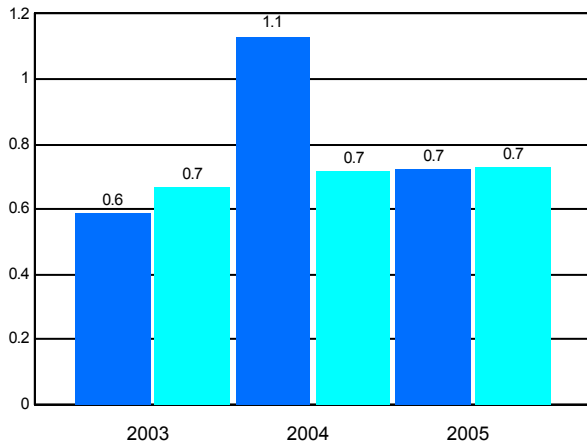
# MCH Health Problem Analysis for Palm Beach Calendar Year 2005

## Births to Teens

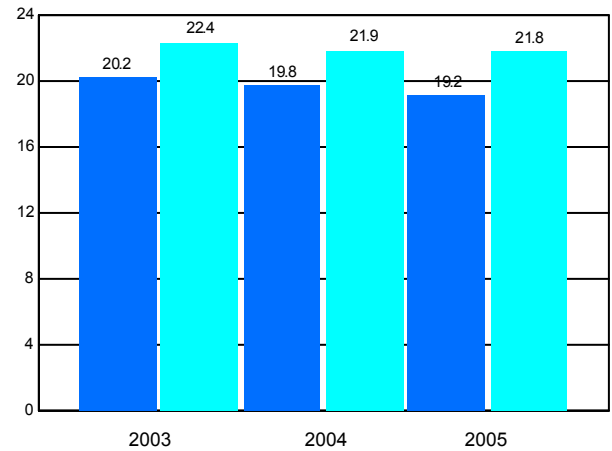
	2003		2004		2005		Comparison to Previous
	Palm Beach	Florida	Palm Beach	Florida	Palm Beach	Florida	
<b>Mothers 10-14</b>							
Number	21	362	42	404	28	415	
Rate per 1,000	0.6	0.7	1.1	0.7	0.7	0.7	Decreased
<b>Mothers 15-17</b>							
Number	424	7,227	450	7,436	448	7,590	
Rate per 1,000	20.2	22.4	19.8	21.9	19.2	21.8	Decreased
<b>Percentage of Repeat Births 15-19</b>	16.6	15.2	16.6	15.4	17.5	16.1	Increased

Data Source: Florida Department of Health, Office of Vital Statistics

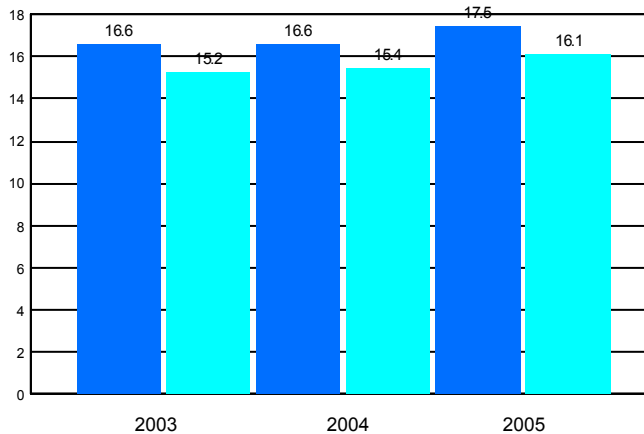
Births to Teens 10-14



Births to Teens 15-17



Repeat Births to Teens 15-19

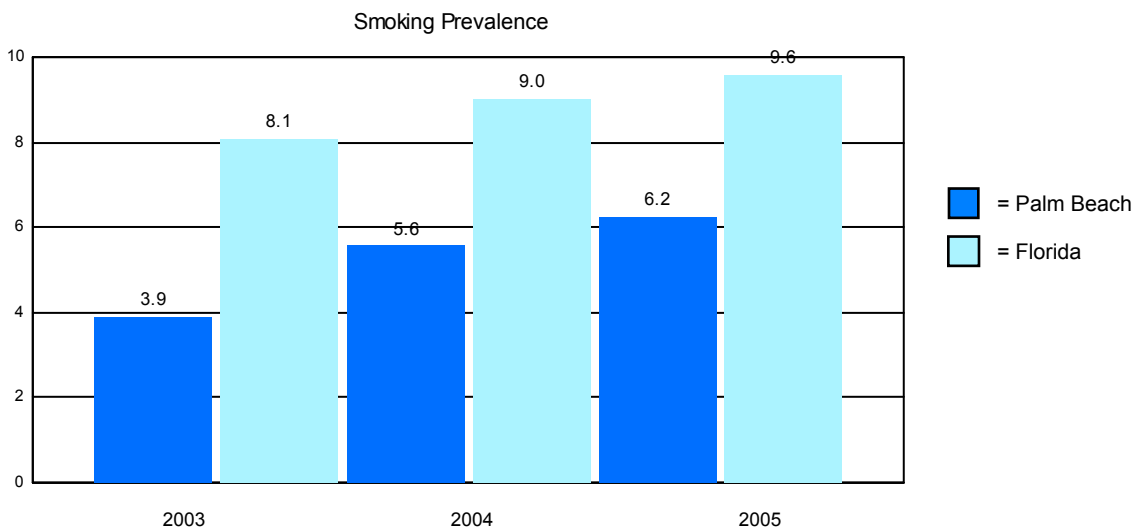


■ = Palm Beach  
■ = Florida

## MCH Health Problem Analysis for Palm Beach Calendar Year 2005

### Reported Smoking Prevalence in Pregnancy

	Mothers Who Smoked	Percentage of Births
<b>2003</b>		
Palm Beach	571	3.90
Florida	17,165	8.09
<b>2004</b>		
Palm Beach	835	5.56
Florida	19,668	9.02
<b>2005</b>		
Palm Beach	946	6.24
Florida	21,687	9.59



Data Source: Florida Department of Health, Office of Vital Statistics

### Pediatric AIDS Cases Among Persons 0 - 4 Years of Age

	2003	2004	2005
Palm Beach	1	0	1
Florida	17	11	6

Data Source: Florida Department of Health, Bureau of HIV/AIDS

### CHD Prenatal Care Clients Offered HIV Testing

2003		2004		2005	
Palm Beach	Florida	Palm Beach	Florida	Palm Beach	Florida
89.64%	86.33%	91.48%	86.34%	93.46%	83.60%

## MCH Health Problem Analysis for Palm Beach Calendar Year 2005

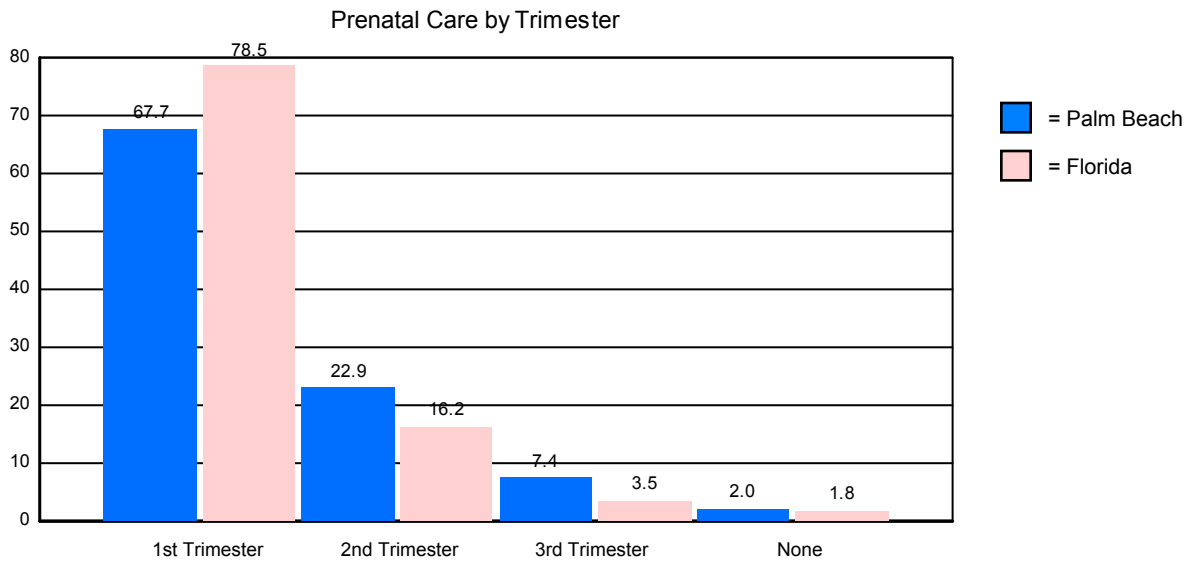
### WIC Services

	Persons Eligible for WIC	Percentage Served by WIC
2003		
Palm Beach	30,521	59.61
Florida	550,426	60.72
2004		
Palm Beach	31,774	65.09
Florida	538,421	64.27
2005		
Palm Beach	32,919	66.20
Florida	556,140	67.27

Data Source: Florida Department of Health, WIC & Nutrition Services

### Prenatal Care by Trimester of Pregnancy

	1st Trimester	2nd Trimester	3rd Trimester	No Prenatal Care
Palm Beach	67.65%	22.94%	7.41%	2.00%
Florida	78.54%	16.19%	3.50%	1.76%



Data Source: Florida Department of Health, Office of Vital Statistics

### Immunizations Among 2-Year-Old CHD Clients

	Number Immunized		Percentage Immunized	
	Palm Beach	Florida	Palm Beach	Florida
2003	925	16,675	67.72	64.22
2004	1,125	18,481	78.34	80.17
2005	940	16,750	87.52	86.02

Data Source: Florida Department of Health, Bureau of Immunizations

**MCH Health Problem Analysis for  
Palm Beach  
Calendar Year 2005**

**Healthy Start Prenatal Screening and Services**

	2003		2004		2005	
	Palm Beach	Florida	Palm Beach	Florida	Palm Beach	Florida
Offered Rate %	83.37	85.76	91.91	87.41	92.59	91.17
Screening Rate %	46.56	51.24	57.72	59.73	64.43	67.36
Consent Rate %	55.85	59.74	62.80	68.33	69.59	73.89

	Number		Percentage	
	Palm Beach	Florida	Palm Beach	Florida
Estimated Number of Pregnant Women	15,124	225,115		
Offered Screen	14,004	205,231	92.59	91.17
Consenting to Screen	9,745	151,646	69.59	73.89
Positive Screen + Referred	8,873	96,528	91.05	63.65
Consenting to HS Participation	8,173	91,004	92.11	94.28
Received Initial Contact	10,236	57,381	125.24	63.05
Need Initial Assessment	9,651	33,073	94.28	57.64
Received Initial Assessment	10,111	30,335	104.77	91.72
Need Ongoing Care Coordination	9,865	32,861	96.38	57.27

	Palm Beach			Florida
	Clients	Percentage of Clients	Encounters per Client	Percentage of Clients
Total Receiving HS Prenatal Service	7,272		3.52	
Total IC/IA Only	718	9.87	2.28	17.58
Total IC/IA/Other HS Service	233	3.20	3.47	5.44
Track or Not Face-to-Face	2,236	30.75	4.35	18.49
Face-to-Face, without FSP	999	13.74	6.82	15.55
Face-to-Face, with FSP	97	1.33	8.36	3.89
Unable to Locate	1,424	19.58	1.90	12.97
Unable to Complete Initial Contact	1,239	17.04	2.11	15.83
Unable to Complete Initial Assessment	6	0.08	2.17	0.21

	Palm Beach		
	Clients	Services	Services/Client
Nutritional Assessment and Counseling	18	92	5.11
Psychosocial Counseling	8	33	4.13
Parenting Education	204	2,882	14.13
Childbirth Education	319	7,932	24.87
Breastfeeding Education	272	1,972	7.25
Smoking Cessation Counseling	62	211	3.40
Interconceptional Education & Counseling	5	19	3.80

**Pregnant Drug-Abusing Women**

	Clients	Encounters/Client	Services/Encounter
Palm Beach	606	4.26	3.19
Florida	4,271	7.30	3.80

**MCH Health Problem Analysis for  
Palm Beach  
Calendar Year 2005**

**Healthy Start Infant Screening and Services**

	2003		2004		2005	
	Palm Beach	Florida	Palm Beach	Florida	Palm Beach	Florida
Screening Rate %	69.63	70.85	68.40	69.62	64.04	72.94

	Number		Percentage	
	Palm Beach	Florida	Palm Beach	Florida
Total Number of Births	15,124	225,115		
Consenting to Screen	9,686	164,203	64.04	72.94
Positive Screen + Referred	1,930	24,124	19.93	14.69
Consenting to HS Participation	1,525	20,697	79.02	85.79
Received Initial Contact	6,783	31,048	444.79	150.01
Need Initial Assessment	6,253	16,973	92.19	54.67
Received Initial Assessment	6,509	15,732	104.09	92.69
Need Ongoing Care Coordination	5,585	15,590	82.34	50.21

	Palm Beach				Florida
	Clients	Percentage of Clients	Encounters per Client	Services per Encounter	Percentage of Clients
Total Receiving HS Infant Service	3,305		2.75	4.97	
Total IC/IA Only	775	23.45	2.18	6.57	18.99
Total IC/IA/Other HS Service	161	4.87	2.67	7.58	3.55
Track or Not Face-to-Face	876	26.51	2.91	5.35	14.16
Face-to-Face, without FSP	577	17.46	4.05	5.53	13.43
Face-to-Face, with FSP	58	1.75	5.29	5.71	4.72
Unable to Locate	301	9.11	2.53	1.49	7.50
Unable to Complete Initial Contact	151	4.57	2.45	1.45	26.86
Unable to Complete Initial Assessment	0	0.00	0.00	0.00	0.21

	Palm Beach		
	Clients	Services	Services/Client
Nutritional Assessment and Counseling	9	32	3.56
Psychosocial Counseling	2	4	2.00
Parenting Education	26	162	6.23
Childbirth Education	1	9	9.00
Breastfeeding Education	170	1,036	6.09
Smoking Cessation Counseling	76	289	3.80
Interconceptional Education & Counseling	8	61	7.63

**Substance-exposed Newborns**

	Clients	Encounters/Client	Services/Encounter
Palm Beach	245	2.86	4.60
Florida	3,819	11.32	3.91