

**MCH Health Problem Analysis for
Orange
Calendar Year 2005**

Population

	Orange		Florida	
	Number	Percentage	Number	Percentage
Total	1,050,939		18,018,497	
White	766,116	72.90	14,581,665	80.93
Nonwhite	284,823	27.10	3,436,832	19.07
Black	231,464	22.02	2,949,668	16.37
Other	53,359	5.08	487,164	2.70

Data Source: Population Estimates from the Florida Legislature, Office of Economic & Demographic Research

Births

	Orange		Florida	
	Number	Percentage	Number	Percentage
Total	16,556		226,219	
White *	11,175	67.50	166,181	73.46
Black *	4,162	25.14	47,957	21.20
Other *	1,209	7.30	11,651	5.15
Hispanic **	5,086	30.72	63,757	28.18
Non-Hispanic **	11,436	69.07	161,615	71.44

*Regardless of ethnicity. Does not include persons whose race is unknown.

**Regardless of race. Does not include persons whose ethnicity is unknown.

Data Source: Florida Department of Health, Office of Vital Statistics

Infant Deaths - Actual vs Expected

Total Births	Actual Infant Deaths	Expected Infant Deaths	Significance
16,556	128	120.20	N
		Actual Infant Death Rate per 1,000 Births	Expected Infant Death Rate per 1,000 Births
		7.73	7.26

H=Actual Rate is Significantly Higher than the Expected Rate

L=Actual Rate is Significantly Lower than the Expected Rate

N=Actual Rate is Not Significantly Different than the Expected Rate

Data Source: Department of Health - Infant, Maternal and Reproductive Health using Florida Vital Statistics data

Low Birthweight - Actual vs Expected

Total Births	Actual LBW Births	Expected LBW Births	Significance
16,556	1,476	1,476.50	N
		Actual Percent LBW	Expected Percent LBW
		8.92	8.92

H=Actual Rate is Significantly Higher than the Expected Rate

L=Actual Rate is Significantly Lower than the Expected Rate

N=Actual Rate is Not Significantly Different than the Expected Rate

Data Source: Department of Health - Infant, Maternal and Reproductive Health using Florida Vital Statistics data

MCH Health Problem Analysis for Orange Calendar Year 2005

Deaths Due to Leading Causes of Infant Mortality

Perinatal Conditions	60	Unintentional Injury	5
Congenital Anomalies	30	Heart Disease	0
Sudden Infant Death Syndrome	8	Other Causes	25

Data Source: Florida Department of Health, Office of Vital Statistics

Infant Mortality

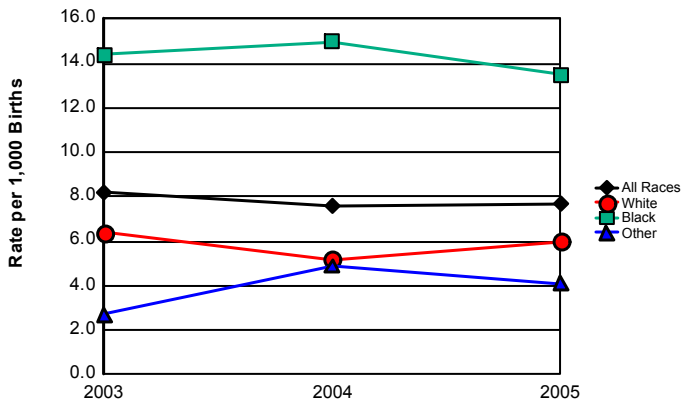
	2003		2004		2005		Comparison to Previous Year	Comparison to Florida Rate
	Orange	Florida	Orange	Florida	Orange	Florida		
Total	123	1,584	117	1,536	128	1,626	Increased	
Rate per 1000	8.2	7.5	7.6	7.0	7.7	7.2	Increased	Above
White *	67	907	55	876	67	882	Increased	
Rate per 1000	6.4	5.8	5.2	5.5	6.0	5.3	Increased	Above
Black *	54	647	57	621	56	652	Decreased	
Rate per 1000	14.4	13.7	15.0	13.2	13.5	13.6	Decreased	Below
Other *	2	27	5	38	5	91	Same	
Rate per 1000	2.7	3.6	4.9	3.6	4.1	7.8	Decreased	Below
Hispanic **	34	273	25	242	38	373	Increased	
Rate per 1000	8.4	5.0	5.6	4.1	7.5	5.9	Increased	Above
Non-Hispanic **	88	1,256	92	1,244	90	1,246	Decreased	
Rate per 1000	8.1	8.0	8.5	7.8	7.9	7.7	Decreased	Above

* Regardless of ethnicity. Does not include persons whose race is unknown.

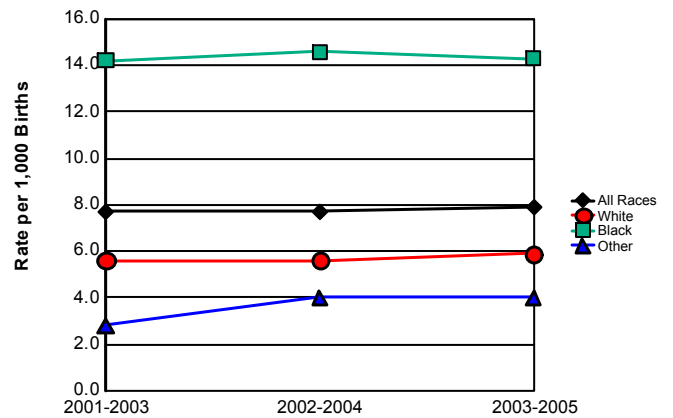
** Regardless of race. Does not include persons whose ethnicity is unknown.

Data Source: Florida Department of Health, Office of Vital Statistics

Infant Mortality Rates



**Infant Mortality Trend
Three-Year Rolling Averages**



	2003	2004	2005
All Races	8.2	7.6	7.7
White	6.4	5.2	6.0
Black	14.4	15.0	13.5
Other	2.7	4.9	4.1

	2001-2003	2002-2004	2003-2005
All Races	7.7	7.7	7.9
White	5.6	5.6	5.9
Black	14.2	14.6	14.3
Other	2.8	4.0	4.0

MCH Health Problem Analysis for Orange Calendar Year 2005

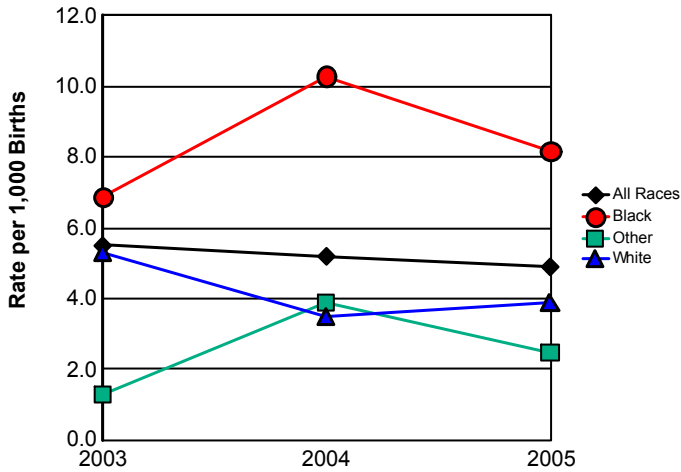
Neonatal Mortality

	2003		2004		2005		Comparison to Previous Year	Comparison to Florida Rate
	Orange	Florida	Orange	Florida	Orange	Florida		
Total	82	1,025	80	989	81	1,024	Increased	
Rate per 1000	5.5	4.8	5.2	4.5	4.9	4.5	Decreased	Above
White *	55	584	37	563	44	544	Increased	
Rate per 1000	5.3	3.7	3.5	3.5	3.9	3.3	Increased	Above
Black *	26	420	39	401	34	422	Decreased	
Rate per 1000	6.9	8.9	10.3	8.5	8.2	8.8	Decreased	Below
Other *	1	18	4	24	3	57	Decreased	
Rate per 1000	1.3	2.4	3.9	2.3	2.5	4.9	Decreased	Below
Hispanic **	27	186	15	146	22	245	Increased	
Rate per 1000	6.7	3.4	3.3	2.5	4.3	3.8	Increased	Above
Non-Hispanic **	54	792	65	801	59	773	Decreased	
Rate per 1000	5.0	5.0	6.0	5.0	5.2	4.8	Decreased	Above

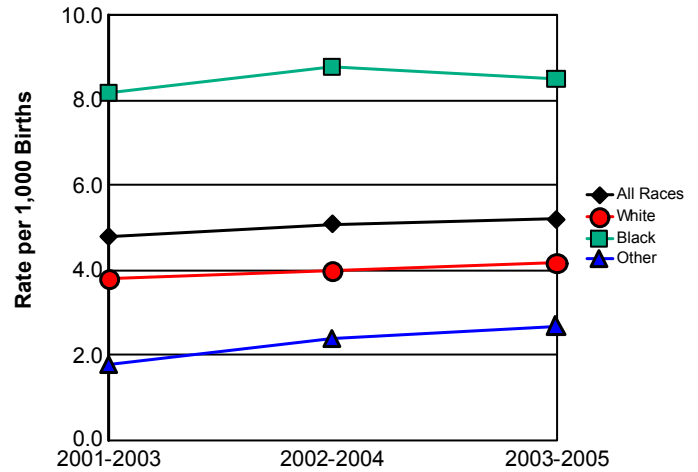
*Regardless of ethnicity. Does not include persons whose race is unknown.
 **Regardless of race. Does not include persons whose ethnicity is

Data Source: Florida Department of Health, Office of Vital Statistics

Neonatal Mortality Rates



Neonatal Mortality Trend Three-Year Rolling Averages



	2003	2004	2005
All Races	5.5	5.2	4.9
White	5.3	3.5	3.9
Black	6.9	10.3	8.2
Other	1.3	3.9	2.5

	2001-2003	2002-2004	2003-2005
All Races	4.8	5.1	5.2
White	3.8	4.0	4.2
Black	8.2	8.8	8.5
Other	1.8	2.4	2.7

MCH Health Problem Analysis for Orange Calendar Year 2005

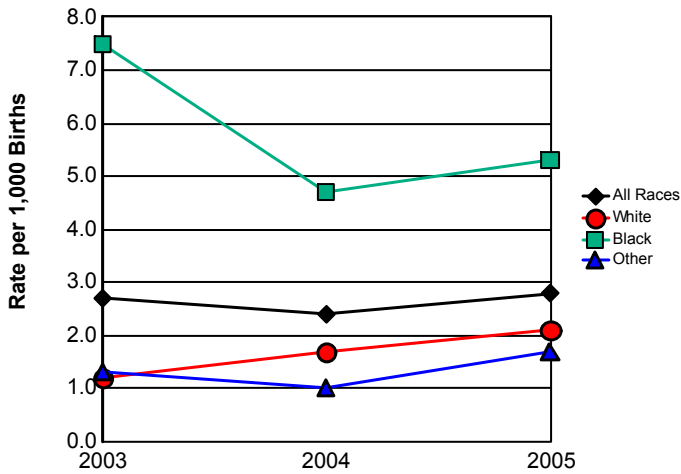
Postneonatal Mortality

	2003		2004		2005		Comparison to Previous Year	Comparison to Florida Rate
	Orange	Florida	Orange	Florida	Orange	Florida		
Total	41	559	37	547	47	602	Increased	
Rate per 1000	2.7	2.6	2.4	2.5	2.8	2.7	Increased	Above
White *	12	323	18	313	23	338	Increased	
Rate per 1000	1.2	2.1	1.7	2.0	2.1	2.0	Increased	Above
Black *	28	227	18	220	22	230	Increased	
Rate per 1000	7.5	4.8	4.7	4.7	5.3	4.8	Increased	Above
Other *	1	9	1	14	2	34	Increased	
Rate per 1000	1.3	1.2	1.0	1.3	1.7	2.9	Increased	Below
Hispanic **	7	87	10	96	16	128	Increased	
Rate per 1000	1.7	1.6	2.2	1.6	3.1	2.0	Increased	Above
Non-Hispanic **	34	464	27	443	31	473	Increased	
Rate per 1000	3.1	3.0	2.5	2.8	2.7	2.9	Increased	Below

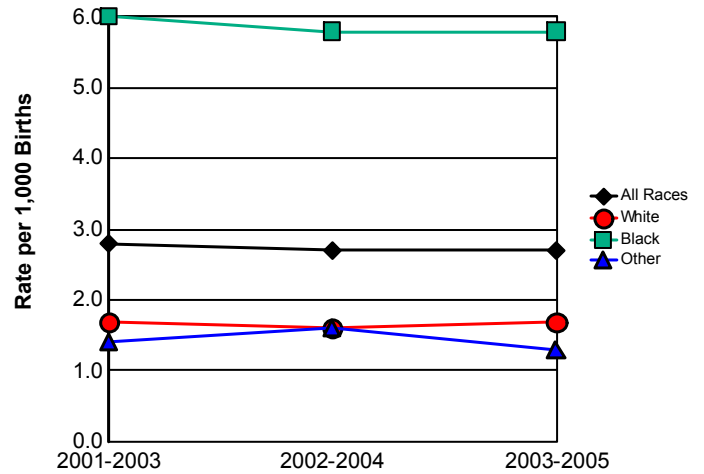
*Regardless of ethnicity. Does not include persons whose race is unknown.
 ** Regardless of race. Does not include persons whose ethnicity is unknown.

Data Source: Florida Department of Health, Office of Vital Statistics

Postneonatal Mortality Rates



Postneonatal Mortality Trend Three-Year Rolling Averages



	2003	2004	2005
All Races	2.7	2.4	2.8
White	1.2	1.7	2.1
Black	7.5	4.7	5.3
Other	1.3	1.0	1.7

	2001-2003	2002-2004	2003-2005
All Races	2.8	2.7	2.7
White	1.7	1.6	1.7
Black	6.0	5.8	5.8
Other	1.4	1.6	1.3

MCH Health Problem Analysis for Orange Calendar Year 2005

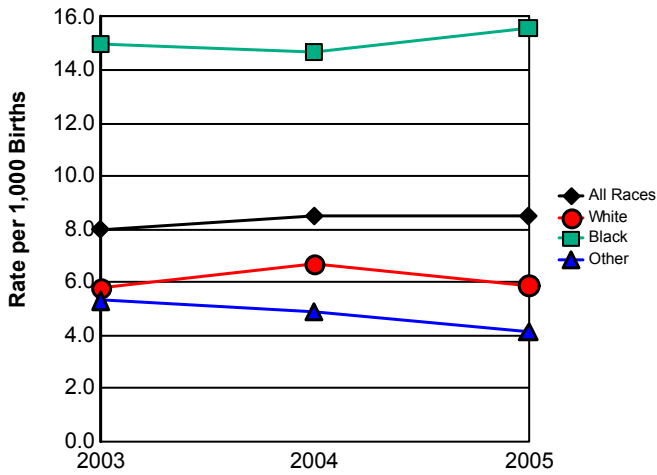
Fetal Mortality

	2003		2004		2005		Comparison to Previous Year	Comparison to Florida Rate
	Orange	Florida	Orange	Florida	Orange	Florida		
Total	120	1,604	131	1,701	141	1,650	Increased	
Rate per 1000	8.0	7.6	8.5	7.8	8.5	7.3	Same	Above
White *	60	912	70	966	66	938	Decreased	
Rate per 1000	5.8	5.8	6.7	6.0	5.9	5.6	Decreased	Above
Black *	56	643	56	680	65	649	Increased	
Rate per 1000	15.0	13.6	14.7	14.5	15.6	13.5	Increased	Above
Other *	4	35	5	43	5	39	Same	
Rate per 1000	5.3	4.7	4.9	4.1	4.1	3.3	Decreased	Above
Hispanic **	20	264	32	328	29	309	Decreased	
Rate per 1000	4.9	4.8	7.1	5.6	5.7	4.8	Decreased	Above
Non-Hispanic **	99	1,220	98	1,243	105	1,172	Increased	
Rate per 1000	9.1	7.8	9.1	7.8	9.2	7.3	Increased	Above

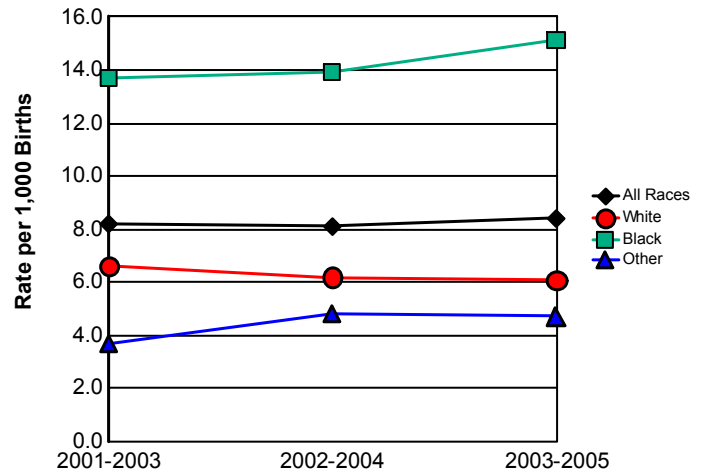
* Regardless of ethnicity. Does not include persons whose race is unknown.

Data Source: Florida Department of Health, Office of Vital Statistics

Fetal Mortality Rates



Fetal Mortality Trend Three-Year Rolling Averages



	2003	2004	2005
All Races	8.0	8.5	8.5
White	5.8	6.7	5.9
Black	15.0	14.7	15.6
Other	5.3	4.9	4.1

	2001-2003	2002-2004	2003-2005
All Races	8.2	8.1	8.4
White	6.6	6.2	6.1
Black	13.7	13.9	15.1
Other	3.7	4.8	4.7

MCH Health Problem Analysis for Orange Calendar Year 2005

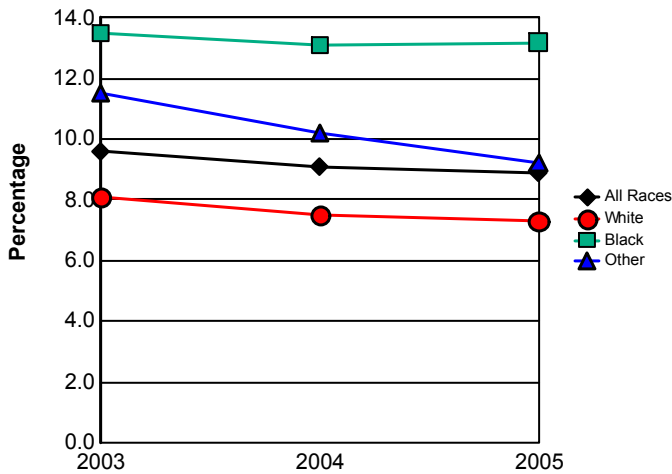
Low Birthweight

	2003		2004		2005		Comparison to Previous Year	Comparison to Florida Rate
	Orange	Florida	Orange	Florida	Orange	Florida		
Total	1,437	18,047	1,392	18,670	1,476	19,802	Increased	
Percentage	9.6	8.5	9.1	8.6	8.9	8.8	Decreased	Above
White *	843	11,190	786	11,570	813	12,221	Increased	
Percentage	8.1	7.1	7.5	7.2	7.3	7.4	Decreased	Below
Black *	507	6,203	498	6,134	551	6,521	Increased	
Percentage	13.5	13.2	13.1	13.1	13.2	13.6	Increased	Below
Other *	86	624	105	923	111	1,025	Increased	
Percentage	11.5	8.4	10.2	8.8	9.2	8.8	Decreased	Above
Hispanic **	339	3,795	355	4,100	365	4,493	Increased	
Percentage	8.4	6.9	7.9	7.0	7.2	7.0	Decreased	Above
Non-Hispanic **	1,095	14,212	1,032	14,459	1,102	15,210	Increased	
Percentage	10.1	9.0	9.6	9.1	9.6	9.4	Same	Above

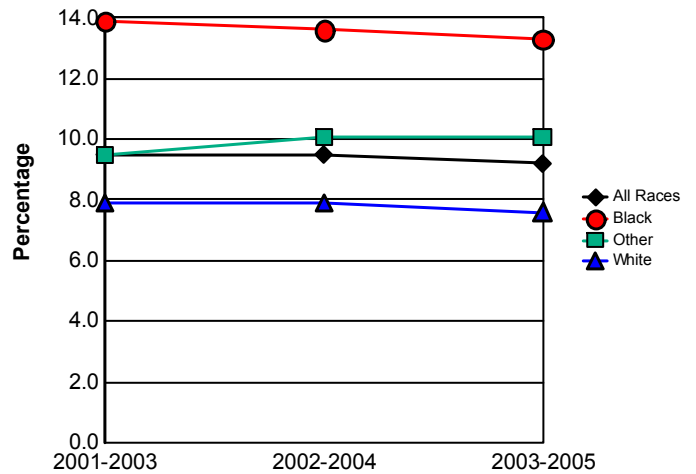
* Regardless of ethnicity. Does not include persons whose race is unknown.

Data Source: Florida Department of Health, Office of Vital Statistics

Percentage of Low Birthweight Births



Low Birthweight Births Trend Three-Year Rolling Averages



	2003	2004	2005
All Races	9.6	9.1	8.9
White	8.1	7.5	7.3
Black	13.5	13.1	13.2
Other	11.5	10.2	9.2

	2001-2003	2002-2004	2003-2005
All Races	9.5	9.5	9.2
White	7.9	7.9	7.6
Black	13.9	13.6	13.3
Other	9.5	10.1	10.1

MCH Health Problem Analysis for Orange Calendar Year 2005

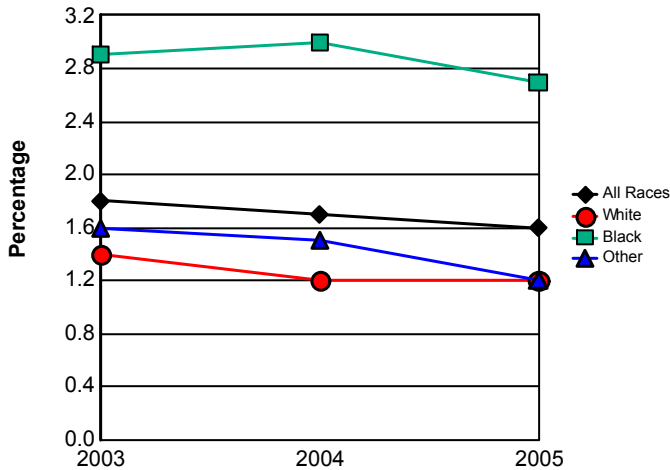
Very Low Birthweight

	2003		2004		2005		Comparison to Previous Year	Comparison to Florida Rate
	Orange	Florida	Orange	Florida	Orange	Florida		
Total	264	3,319	253	3,491	260	3,637	Increased	
Percentage	1.8	1.6	1.7	1.6	1.6	1.6	Decreased	Same
White *	143	1,841	123	1,862	134	1,960	Increased	
Percentage	1.4	1.2	1.2	1.2	1.2	1.2	Same	Same
Black *	108	1,365	113	1,470	111	1,507	Decreased	
Percentage	2.9	2.9	3.0	3.1	2.7	3.1	Decreased	Below
Other *	12	103	15	139	15	162	Same	
Percentage	1.6	1.4	1.5	1.3	1.2	1.4	Decreased	Below
Hispanic **	0	0	0	0	0	0	Same	
Percentage	0.0	0.0	0.0	0.0	0.0	0.0	Same	Same
Non-Hispanic **	198	2,621	192	2,775	200	2,826	Increased	
Percentage	1.8	1.7	1.8	1.7	1.7	1.7	Decreased	Same

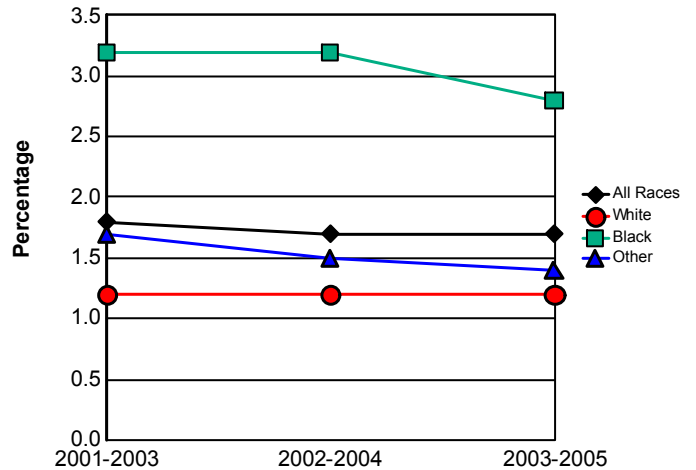
*Regardless of ethnicity. Does not include persons whose race is unknown.

Data Source: Florida Department of Health, Office of Vital Statistics

Percentage of Very Low Birthweight Births



Very Low Birthweight Trend Three-Year Rolling Averages



	2003	2004	2005
All Races	1.8	1.7	1.6
White	1.4	1.2	1.2
Black	2.9	3.0	2.7
Other	1.6	1.5	1.2

	2001-2003	2002-2004	2003-2005
All Races	1.8	1.7	1.7
White	1.2	1.2	1.2
Black	3.2	3.2	2.8
Other	1.7	1.5	1.4

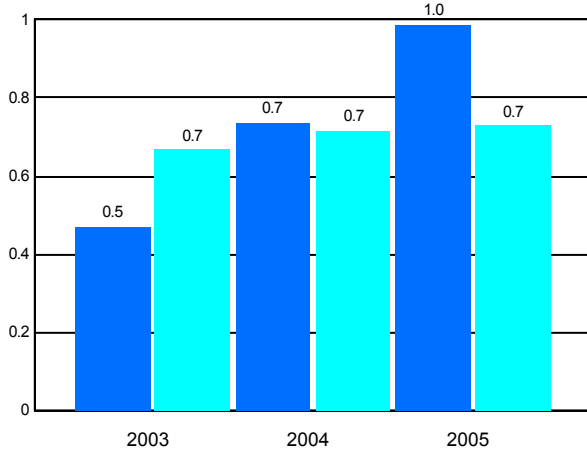
MCH Health Problem Analysis for Orange Calendar Year 2005

Births to Teens

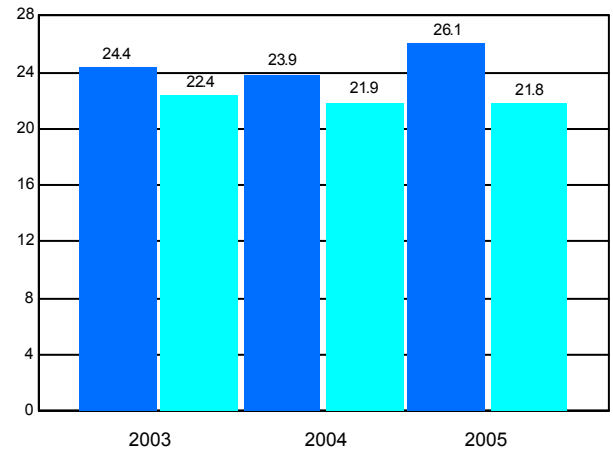
	2003		2004		2005		Comparison to Previous
	Orange	Florida	Orange	Florida	Orange	Florida	
Mothers 10-14							
Number	16	362	28	404	37	415	
Rate per 1,000	0.5	0.7	0.7	0.7	1.0	0.7	Increased
Mothers 15-17							
Number	478	7,227	499	7,436	544	7,590	
Rate per 1,000	24.4	22.4	23.9	21.9	26.1	21.8	Increased
Percentage of Repeat Births 15-19	17.1	15.2	16.5	15.4	16.3	16.1	Decreased

Data Source: Florida Department of Health, Office of Vital Statistics

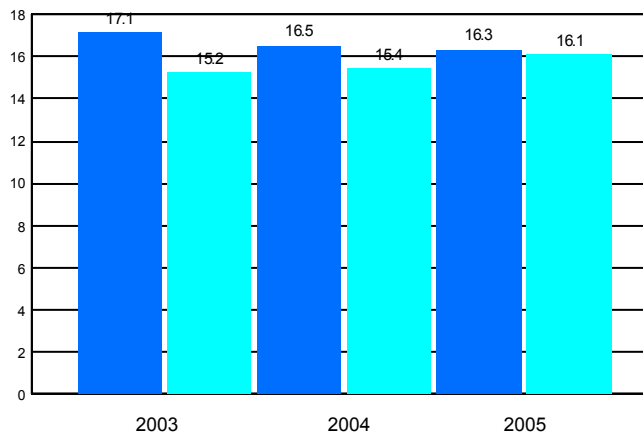
Births to Teens 10-14



Births to Teens 15-17



Repeat Births to Teens 15-19

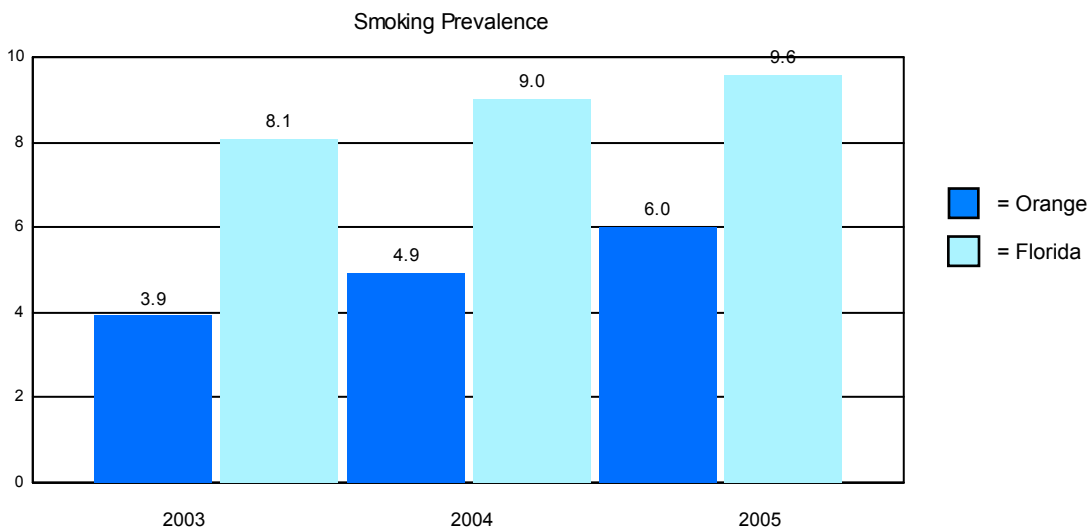


■ = Orange
■ = Florida

MCH Health Problem Analysis for Orange Calendar Year 2005

Reported Smoking Prevalence in Pregnancy

	Mothers Who Smoked	Percentage of Births
2003		
Orange	585	3.92
Florida	17,165	8.09
2004		
Orange	755	4.93
Florida	19,668	9.02
2005		
Orange	996	6.02
Florida	21,687	9.59



Data Source: Florida Department of Health, Office of Vital Statistics

Pediatric AIDS Cases Among Persons 0 - 4 Years of Age

	2003	2004	2005
Orange	3	1	0
Florida	17	11	6

Data Source: Florida Department of Health, Bureau of HIV/AIDS

CHD Prenatal Care Clients Offered HIV Testing

2003		2004		2005	
Orange	Florida	Orange	Florida	Orange	Florida
97.35%	86.33%	97.07%	86.34%	95.26%	83.60%

MCH Health Problem Analysis for Orange Calendar Year 2005

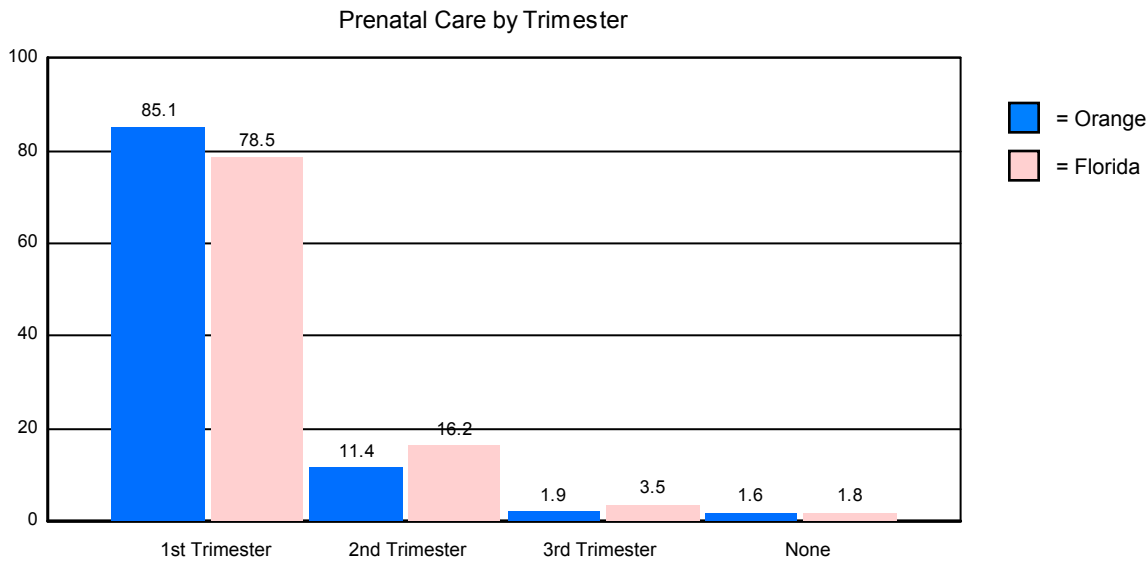
WIC Services

	Persons Eligible for WIC	Percentage Served by WIC
2003		
Orange	35,245	59.97
Florida	550,426	60.72
2004		
Orange	35,979	61.33
Florida	538,421	64.27
2005		
Orange	37,671	67.03
Florida	556,140	67.27

Data Source: Florida Department of Health, WIC & Nutrition Services

Prenatal Care by Trimester of Pregnancy

	1st Trimester	2nd Trimester	3rd Trimester	No Prenatal Care
Orange	85.09%	11.42%	1.91%	1.57%
Florida	78.54%	16.19%	3.50%	1.76%



Data Source: Florida Department of Health, Office of Vital Statistics

Immunizations Among 2-Year-Old CHD Clients

	Number Immunized		Percentage Immunized	
	Orange	Florida	Orange	Florida
2003	1,023	16,675	84.62	64.22
2004	1,304	18,481	84.40	80.17
2005	1,019	16,750	75.09	86.02

Data Source: Florida Department of Health, Bureau of Immunizations

**MCH Health Problem Analysis for
Orange
Calendar Year 2005**

Healthy Start Prenatal Screening and Services

	2003		2004		2005	
	Orange	Florida	Orange	Florida	Orange	Florida
Offered Rate %	90.02	85.76	86.98	87.41	90.03	91.17
Screening Rate %	56.06	51.24	61.72	59.73	69.59	67.36
Consent Rate %	62.28	59.74	70.96	68.33	77.30	73.89

	Number		Percentage	
	Orange	Florida	Orange	Florida
Estimated Number of Pregnant Women	16,526	225,115		
Offered Screen	14,878	205,231	90.03	91.17
Consenting to Screen	11,501	151,646	77.30	73.89
Positive Screen + Referred	6,093	96,528	52.98	63.65
Consenting to HS Participation	5,893	91,004	96.72	94.28
Received Initial Contact	3,337	57,381	56.63	63.05
Need Initial Assessment	1,895	33,073	56.79	57.64
Received Initial Assessment	1,630	30,335	86.02	91.72
Need Ongoing Care Coordination	1,566	32,861	46.93	57.27

	Orange			Florida
	Clients	Percentage of Clients	Encounters per Client	Percentage of Clients
Total Receiving HS Prenatal Service	6,864		3.93	
Total IC/IA Only	1,363	19.86	2.35	17.58
Total IC/IA/Other HS Service	276	4.02	3.07	5.44
Track or Not Face-to-Face	952	13.87	3.47	18.49
Face-to-Face, without FSP	1,285	18.72	8.54	15.55
Face-to-Face, with FSP	311	4.53	8.38	3.89
Unable to Locate	1,040	15.15	3.24	12.97
Unable to Complete Initial Contact	1,064	15.50	1.44	15.83
Unable to Complete Initial Assessment	1	0.01	3.00	0.21

	Orange		
	Clients	Services	Services/Client
Nutritional Assessment and Counseling	2	3	1.50
Psychosocial Counseling	72	1,878	26.08
Parenting Education	1,842	6,124	3.32
Childbirth Education	206	8,590	41.70
Breastfeeding Education	1,467	2,812	1.92
Smoking Cessation Counseling	179	265	1.48
Interconceptional Education & Counseling	746	1,093	1.47

Pregnant Drug-Abusing Women

	Clients	Encounters/Client	Services/Encounter
Orange	37	4.14	3.01
Florida	4,271	7.30	3.80

**MCH Health Problem Analysis for
Orange
Calendar Year 2005**

Healthy Start Infant Screening and Services

	2003		2004		2005	
	Orange	Florida	Orange	Florida	Orange	Florida
Screening Rate %	64.37	70.85	56.85	69.62	66.68	72.94

	Number		Percentage	
	Orange	Florida	Orange	Florida
Total Number of Births	16,526	225,115		
Consenting to Screen	11,019	164,203	66.68	72.94
Positive Screen + Referred	1,220	24,124	11.07	14.69
Consenting to HS Participation	1,096	20,697	89.84	85.79
Received Initial Contact	1,396	31,048	127.37	150.01
Need Initial Assessment	623	16,973	44.63	54.67
Received Initial Assessment	556	15,732	89.25	92.69
Need Ongoing Care Coordination	561	15,590	40.19	50.21

	Orange			Florida
	Clients	Percentage of Clients	Encounters per Client	Percentage of Clients
Total Receiving HS Infant Service	5,394		2.42	
Total IC/IA Only	729	13.52	1.91	18.99
Total IC/IA/Other HS Service	40	0.74	2.75	3.55
Track or Not Face-to-Face	459	8.51	3.51	14.16
Face-to-Face, without FSP	501	9.29	7.13	13.43
Face-to-Face, with FSP	166	3.08	9.75	4.72
Unable to Locate	319	5.91	2.82	7.50
Unable to Complete Initial Contact	2,804	51.98	1.15	26.86
Unable to Complete Initial Assessment	1	0.02	5.00	0.21

	Orange		
	Clients	Services	Services/Client
Nutritional Assessment and Counseling	6	10	1.67
Psychosocial Counseling	46	1,696	36.87
Parenting Education	694	3,457	4.98
Childbirth Education	4	5	1.25
Breastfeeding Education	126	199	1.58
Smoking Cessation Counseling	62	73	1.18
Interconceptional Education & Counseling	225	333	1.48

Substance-exposed Newborns

	Clients	Encounters/Client	Services/Encounter
Orange	170	9.83	3.32
Florida	3,819	11.32	3.91