

**MCH Health Problem Analysis for
Miami-Dade
Calendar Year 2005**

Population

	Miami-Dade		Florida	
	Number	Percentage	Number	Percentage
Total	2,432,276		18,018,497	
White	1,843,604	75.80	14,581,665	80.93
Nonwhite	588,672	24.20	3,436,832	19.07
Black	535,167	22.00	2,949,668	16.37
Other	53,505	2.20	487,164	2.70

Data Source: Population Estimates from the Florida Legislature, Office of Economic & Demographic Research

Births

	Miami-Dade		Florida	
	Number	Percentage	Number	Percentage
Total	32,365		226,219	
White *	23,334	72.10	166,181	73.46
Black *	8,107	25.05	47,957	21.20
Other *	758	2.34	11,651	5.15
Hispanic **	20,433	63.13	63,757	28.18
Non-Hispanic **	11,821	36.52	161,615	71.44

*Regardless of ethnicity. Does not include persons whose race is unknown.

**Regardless of race. Does not include persons whose ethnicity is unknown.

Data Source: Florida Department of Health, Office of Vital Statistics

Infant Deaths - Actual vs Expected

Total Births	Actual Infant Deaths	Expected Infant Deaths	Significance
32,365	176	237.30	L
		Actual Infant Death Rate per 1,000 Births	Expected Infant Death Rate per 1,000 Births
		5.44	7.33

H=Actual Rate is Significantly Higher than the Expected Rate

L=Actual Rate is Significantly Lower than the Expected Rate

N=Actual Rate is Not Significantly Different than the Expected Rate

Data Source: Department of Health - Infant, Maternal and Reproductive Health using Florida Vital Statistics data

Low Birthweight - Actual vs Expected

Total Births	Actual LBW Births	Expected LBW Births	Significance
32,365	2,918	2,893.60	N
		Actual Percent LBW	Expected Percent LBW
		9.02	8.94

H=Actual Rate is Significantly Higher than the Expected Rate

L=Actual Rate is Significantly Lower than the Expected Rate

N=Actual Rate is Not Significantly Different than the Expected Rate

Data Source: Department of Health - Infant, Maternal and Reproductive Health using Florida Vital Statistics data

MCH Health Problem Analysis for Miami-Dade Calendar Year 2005

Deaths Due to Leading Causes of Infant Mortality

Perinatal Conditions	82	Unintentional Injury	6
Congenital Anomalies	44	Heart Disease	6
Sudden Infant Death Syndrome	2	Other Causes	36

Data Source: Florida Department of Health, Office of Vital Statistics

Infant Mortality

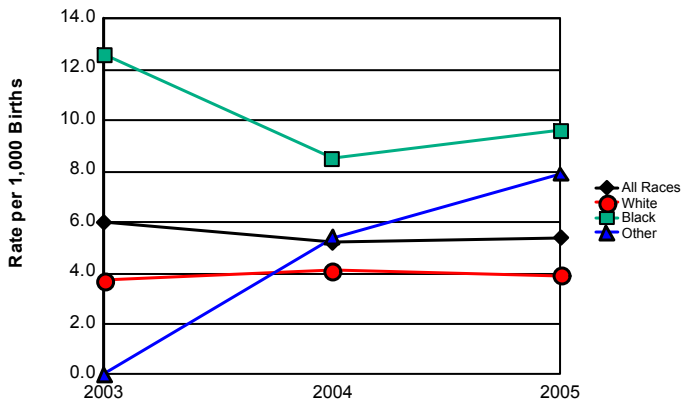
	2003		2004		2005		Comparison to Previous Year	Comparison to Florida Rate
	Miami-Dade	Florida	Miami-Dade	Florida	Miami-Dade	Florida		
Total	194	1,584	167	1,536	176	1,626	Increased	
Rate per 1000	6.0	7.5	5.2	7.0	5.4	7.2	Increased	Below
White *	87	907	94	876	92	882	Decreased	
Rate per 1000	3.7	5.8	4.1	5.5	3.9	5.3	Decreased	Below
Black *	107	647	68	621	78	652	Increased	
Rate per 1000	12.6	13.7	8.5	13.2	9.6	13.6	Increased	Below
Other *	0	27	5	38	6	91	Increased	
Rate per 1000	0.0	3.6	5.4	3.6	7.9	7.8	Increased	Above
Hispanic **	53	273	58	242	91	373	Increased	
Rate per 1000	2.6	5.0	2.9	4.1	4.5	5.9	Increased	Below
Non-Hispanic **	101	1,256	73	1,244	81	1,246	Increased	
Rate per 1000	8.1	8.0	6.1	7.8	6.9	7.7	Increased	Below

* Regardless of ethnicity. Does not include persons whose race is unknown.

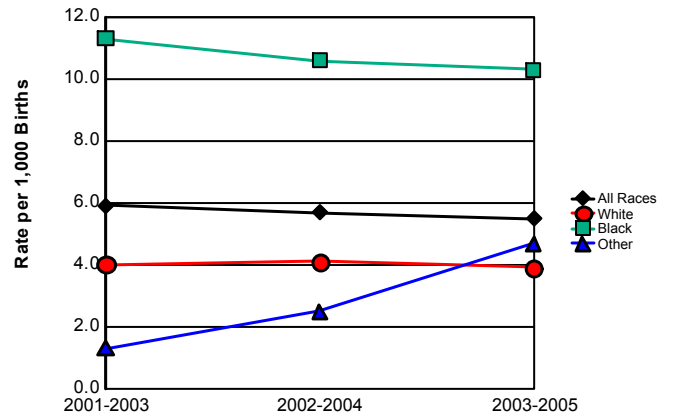
** Regardless of race. Does not include persons whose ethnicity is unknown.

Data Source: Florida Department of Health, Office of Vital Statistics

Infant Mortality Rates



**Infant Mortality Trend
Three-Year Rolling Averages**



	2003	2004	2005
All Races	6.0	5.2	5.4
White	3.7	4.1	3.9
Black	12.6	8.5	9.6
Other	0.0	5.4	7.9

	2001-2003	2002-2004	2003-2005
All Races	5.9	5.7	5.5
White	4.0	4.1	3.9
Black	11.3	10.6	10.3
Other	1.3	2.5	4.7

MCH Health Problem Analysis for Miami-Dade Calendar Year 2005

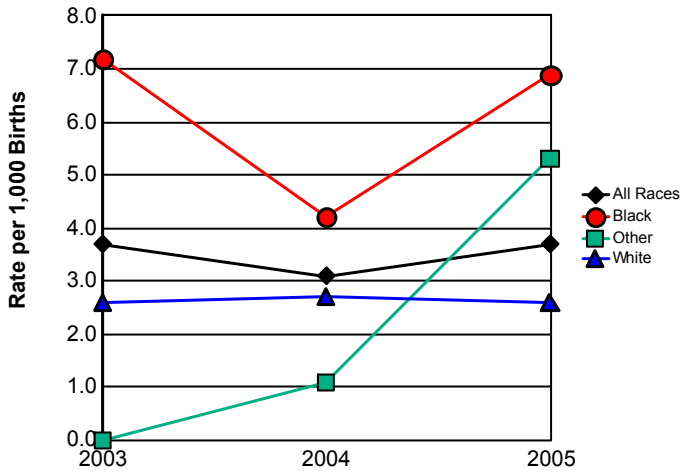
Neonatal Mortality

	2003		2004		2005		Comparison to Previous Year	Comparison to Florida Rate
	Miami-Dade	Florida	Miami-Dade	Florida	Miami-Dade	Florida		
Total	122	1,025	98	989	121	1,024	Increased	
Rate per 1000	3.7	4.8	3.1	4.5	3.7	4.5	Increased	Below
White *	61	584	63	563	61	544	Decreased	
Rate per 1000	2.6	3.7	2.7	3.5	2.6	3.3	Decreased	Below
Black *	61	420	34	401	56	422	Increased	
Rate per 1000	7.2	8.9	4.2	8.5	6.9	8.8	Increased	Below
Other *	0	18	1	24	4	57	Increased	
Rate per 1000	0.0	2.4	1.1	2.3	5.3	4.9	Increased	Above
Hispanic **	40	186	32	146	65	245	Increased	
Rate per 1000	2.0	3.4	1.6	2.5	3.2	3.8	Increased	Below
Non-Hispanic **	47	792	35	801	52	773	Increased	
Rate per 1000	3.8	5.0	2.9	5.0	4.4	4.8	Increased	Below

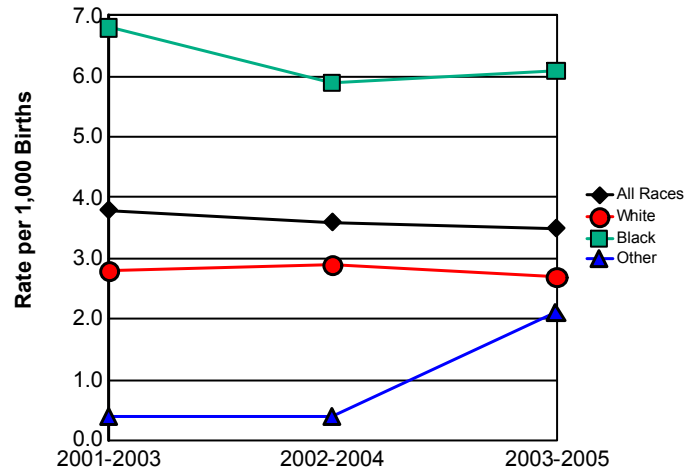
*Regardless of ethnicity. Does not include persons whose race is unknown.
**Regardless of race. Does not include persons whose ethnicity is

Data Source: Florida Department of Health, Office of Vital Statistics

Neonatal Mortality Rates



Neonatal Mortality Trend Three-Year Rolling Averages



	2003	2004	2005
All Races	3.7	3.1	3.7
White	2.6	2.7	2.6
Black	7.2	4.2	6.9
Other	0.0	1.1	5.3

	2001-2003	2002-2004	2003-2005
All Races	3.8	3.6	3.5
White	2.8	2.9	2.7
Black	6.8	5.9	6.1
Other	0.4	0.4	2.1

MCH Health Problem Analysis for Miami-Dade Calendar Year 2005

Postneonatal Mortality

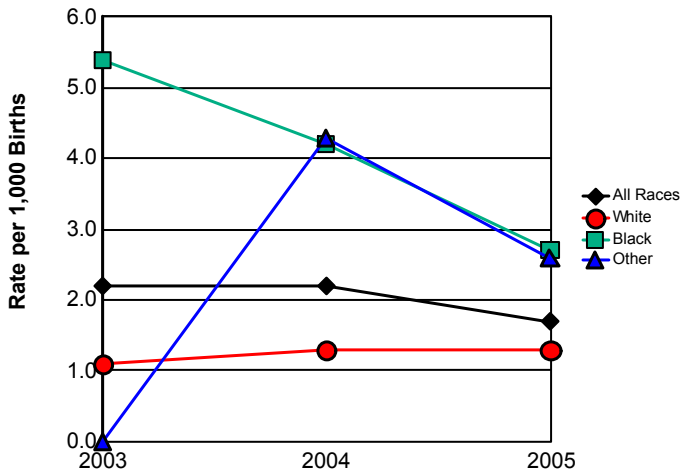
	2003		2004		2005		Comparison to Previous Year	Comparison to Florida Rate
	Miami-Dade	Florida	Miami-Dade	Florida	Miami-Dade	Florida		
Total	72	559	69	547	55	602	Decreased	
Rate per 1000	2.2	2.6	2.2	2.5	1.7	2.7	Decreased	Below
White *	26	323	31	313	31	338	Same	
Rate per 1000	1.1	2.1	1.3	2.0	1.3	2.0	Same	Below
Black *	46	227	34	220	22	230	Decreased	
Rate per 1000	5.4	4.8	4.2	4.7	2.7	4.8	Decreased	Below
Other *	0	9	4	14	2	34	Decreased	
Rate per 1000	0.0	1.2	4.3	1.3	2.6	2.9	Decreased	Below
Hispanic **	13	87	26	96	26	128	Same	
Rate per 1000	0.6	1.6	1.3	1.6	1.3	2.0	Same	Below
Non-Hispanic **	54	464	38	443	29	473	Decreased	
Rate per 1000	4.3	3.0	3.2	2.8	2.5	2.9	Decreased	Below

*Regardless of ethnicity. Does not include persons whose race is unknown.

** Regardless of race. Does not include persons whose ethnicity is unknown.

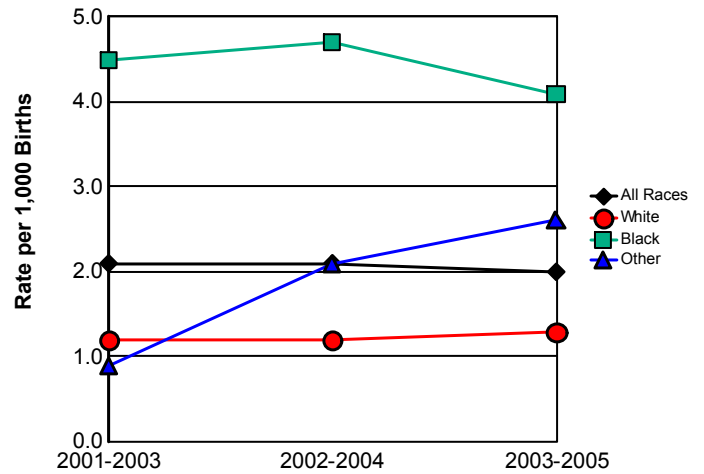
Data Source: Florida Department of Health, Office of Vital Statistics

Postneonatal Mortality Rates



	2003	2004	2005
All Races	2.2	2.2	1.7
White	1.1	1.3	1.3
Black	5.4	4.2	2.7
Other	0.0	4.3	2.6

Postneonatal Mortality Trend Three-Year Rolling Averages



	2001-2003	2002-2004	2003-2005
All Races	2.1	2.1	2.0
White	1.2	1.2	1.3
Black	4.5	4.7	4.1
Other	0.9	2.1	2.6

MCH Health Problem Analysis for Miami-Dade Calendar Year 2005

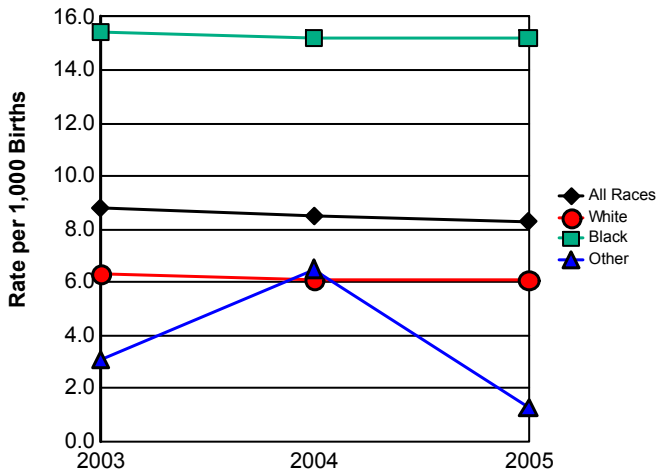
Fetal Mortality

	2003		2004		2005		Comparison to Previous Year	Comparison to Florida Rate
	Miami-Dade	Florida	Miami-Dade	Florida	Miami-Dade	Florida		
Total	285	1,604	272	1,701	270	1,650	Decreased	
Rate per 1000	8.8	7.6	8.5	7.8	8.3	7.3	Decreased	Above
White *	147	912	141	966	143	938	Increased	
Rate per 1000	6.3	5.8	6.1	6.0	6.1	5.6	Same	Above
Black *	131	643	122	680	123	649	Increased	
Rate per 1000	15.4	13.6	15.2	14.5	15.2	13.5	Same	Above
Other *	2	35	6	43	1	39	Decreased	
Rate per 1000	3.1	4.7	6.5	4.1	1.3	3.3	Decreased	Below
Hispanic **	91	264	88	328	72	309	Decreased	
Rate per 1000	4.5	4.8	4.4	5.6	3.5	4.8	Decreased	Below
Non-Hispanic **	95	1,220	95	1,243	66	1,172	Decreased	
Rate per 1000	7.6	7.8	8.0	7.8	5.6	7.3	Decreased	Below

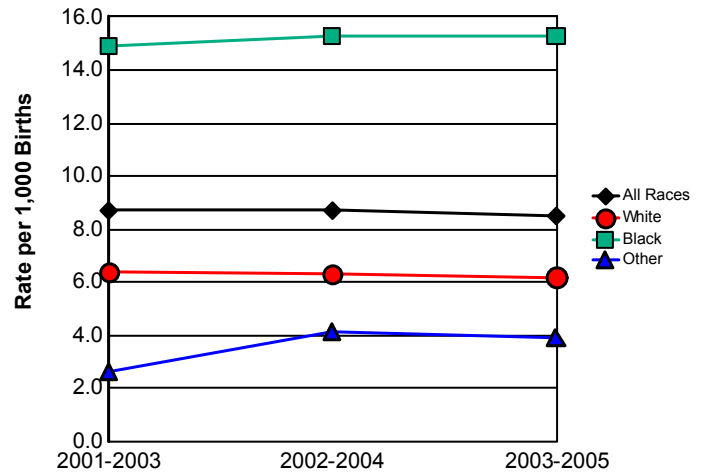
* Regardless of ethnicity. Does not include persons whose race is unknown.

Data Source: Florida Department of Health, Office of Vital Statistics

Fetal Mortality Rates



Fetal Mortality Trend Three-Year Rolling Averages



	2003	2004	2005
All Races	8.8	8.5	8.3
White	6.3	6.1	6.1
Black	15.4	15.2	15.2
Other	3.1	6.5	1.3

	2001-2003	2002-2004	2003-2005
All Races	8.7	8.7	8.5
White	6.4	6.3	6.2
Black	14.9	15.3	15.3
Other	2.6	4.1	3.9

MCH Health Problem Analysis for Miami-Dade Calendar Year 2005

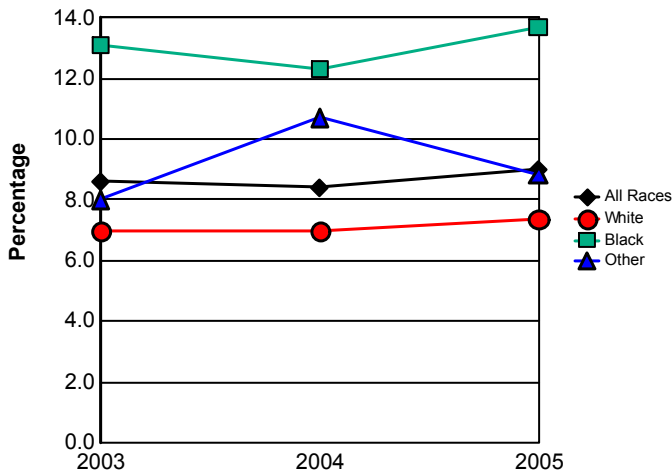
Low Birthweight

	2003		2004		2005		Comparison to Previous Year	Comparison to Florida Rate
	Miami-Dade	Florida	Miami-Dade	Florida	Miami-Dade	Florida		
Total	2,797	18,047	2,703	18,670	2,918	19,802	Increased	
Percentage	8.6	8.5	8.4	8.6	9.0	8.8	Increased	Above
White *	1,625	11,190	1,607	11,570	1,729	12,221	Increased	
Percentage	7.0	7.1	7.0	7.2	7.4	7.4	Increased	Same
Black *	1,117	6,203	991	6,134	1,112	6,521	Increased	
Percentage	13.1	13.2	12.3	13.1	13.7	13.6	Increased	Above
Other *	52	624	99	923	67	1,025	Decreased	
Percentage	8.0	8.4	10.7	8.8	8.8	8.8	Decreased	Same
Hispanic **	1,367	3,795	1,394	4,100	1,508	4,493	Increased	
Percentage	6.8	6.9	7.0	7.0	7.4	7.0	Increased	Above
Non-Hispanic **	1,419	14,212	1,293	14,459	1,398	15,210	Increased	
Percentage	11.4	9.0	10.9	9.1	11.8	9.4	Increased	Above

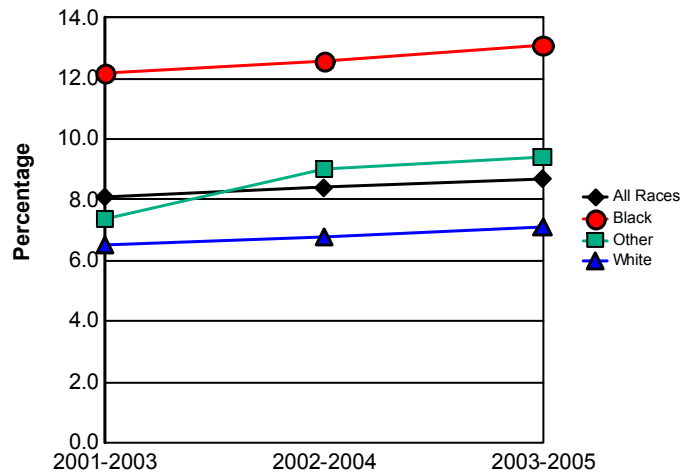
* Regardless of ethnicity. Does not include persons whose race is unknown.

Data Source: Florida Department of Health, Office of Vital Statistics

Percentage of Low Birthweight Births



Low Birthweight Births Trend Three-Year Rolling Averages



	2003	2004	2005
All Races	8.6	8.4	9.0
White	7.0	7.0	7.4
Black	13.1	12.3	13.7
Other	8.0	10.7	8.8

	2001-2003	2002-2004	2003-2005
All Races	8.1	8.4	8.7
White	6.5	6.8	7.1
Black	12.2	12.6	13.1
Other	7.4	9.0	9.4

MCH Health Problem Analysis for Miami-Dade Calendar Year 2005

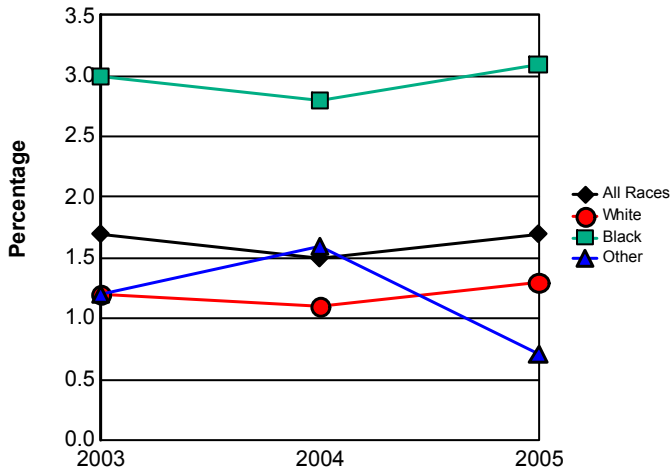
Very Low Birthweight

	2003		2004		2005		Comparison to Previous Year	Comparison to Florida Rate
	Miami-Dade	Florida	Miami-Dade	Florida	Miami-Dade	Florida		
Total	549	3,319	491	3,491	566	3,637	Increased	
Percentage	1.7	1.6	1.5	1.6	1.7	1.6	Increased	Above
White *	285	1,841	247	1,862	304	1,960	Increased	
Percentage	1.2	1.2	1.1	1.2	1.3	1.2	Increased	Above
Black *	253	1,365	224	1,470	255	1,507	Increased	
Percentage	3.0	2.9	2.8	3.1	3.1	3.1	Increased	Same
Other *	8	103	15	139	5	162	Decreased	
Percentage	1.2	1.4	1.6	1.3	0.7	1.4	Decreased	Below
Hispanic **	0	0	0	0	0	0	Same	
Percentage	0.0	0.0	0.0	0.0	0.0	0.0	Same	Same
Non-Hispanic **	306	2,621	272	2,775	284	2,826	Increased	
Percentage	2.5	1.7	2.3	1.7	2.4	1.7	Increased	Above

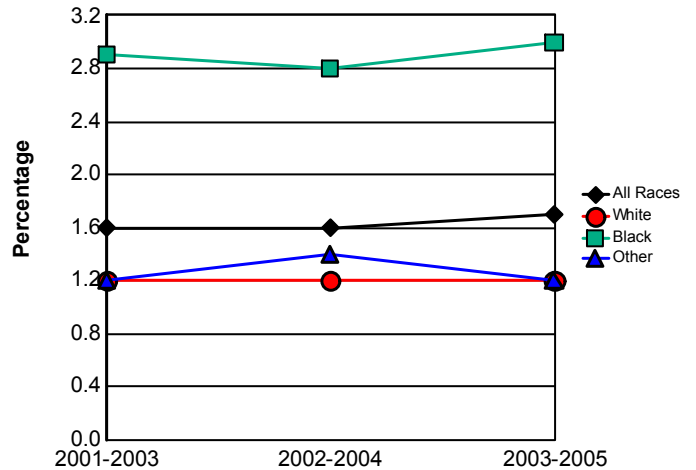
*Regardless of ethnicity. Does not include persons whose race is unknown.

Data Source: Florida Department of Health, Office of Vital Statistics

Percentage of Very Low Birthweight Births



Very Low Birthweight Trend Three-Year Rolling Averages



	2003	2004	2005
All Races	1.7	1.5	1.7
White	1.2	1.1	1.3
Black	3.0	2.8	3.1
Other	1.2	1.6	0.7

	2001-2003	2002-2004	2003-2005
All Races	1.6	1.6	1.7
White	1.2	1.2	1.2
Black	2.9	2.8	3.0
Other	1.2	1.4	1.2

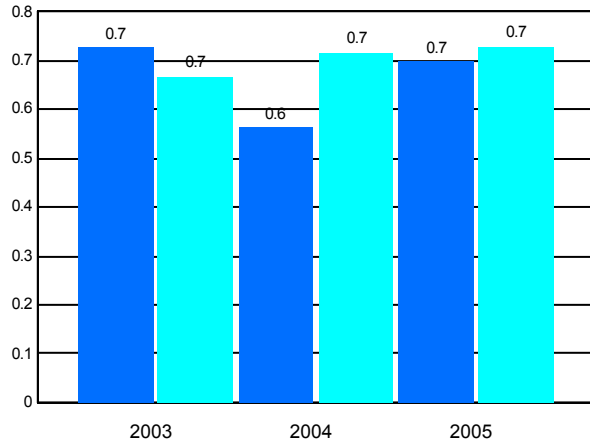
MCH Health Problem Analysis for Miami-Dade Calendar Year 2005

Births to Teens

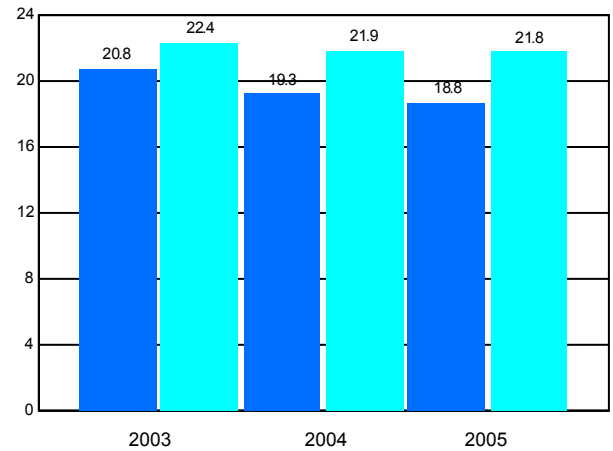
	2003		2004		2005		Comparison to Previous
	Miami-Dade	Florida	Miami-Dade	Florida	Miami-Dade	Florida	
Mothers 10-14							
Number	59	362	47	404	57	415	
Rate per 1,000	0.7	0.7	0.6	0.7	0.7	0.7	Increased
Mothers 15-17							
Number	1,025	7,227	992	7,436	965	7,590	
Rate per 1,000	20.8	22.4	19.3	21.9	18.8	21.8	Decreased
Percentage of Repeat Births 15-19	12.1	15.2	11.5	15.4	12.9	16.1	Increased

Data Source: Florida Department of Health, Office of Vital Statistics

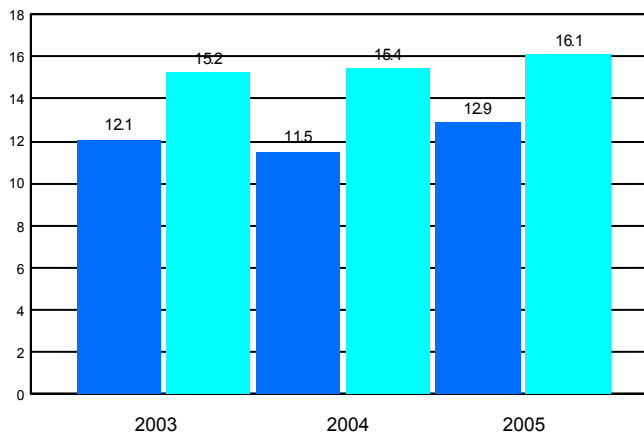
Births to Teens 10-14



Births to Teens 15-17



Repeat Births to Teens 15-19

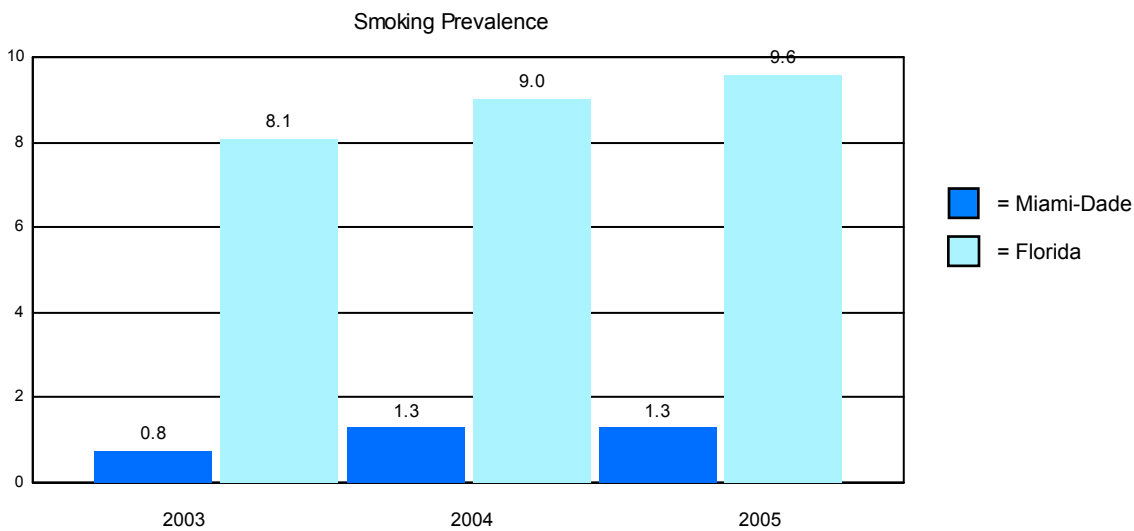


■ = Miami-Dade
■ = Florida

MCH Health Problem Analysis for Miami-Dade Calendar Year 2005

Reported Smoking Prevalence in Pregnancy

	Mothers Who Smoked	Percentage of Births
2003		
Miami-Dade	245	0.75
Florida	17,165	8.09
2004		
Miami-Dade	417	1.30
Florida	19,668	9.02
2005		
Miami-Dade	421	1.30
Florida	21,687	9.59



Data Source: Florida Department of Health, Office of Vital Statistics

Pediatric AIDS Cases Among Persons 0 - 4 Years of Age

	2003	2004	2005
Miami-Dade	4	2	3
Florida	17	11	6

Data Source: Florida Department of Health, Bureau of HIV/AIDS

CHD Prenatal Care Clients Offered HIV Testing

2003		2004		2005	
Miami-Dade	Florida	Miami-Dade	Florida	Miami-Dade	Florida
0.00%	86.33%	93.44%	86.34%	89.94%	83.60%

**MCH Health Problem Analysis for
Miami-Dade
Calendar Year 2005**

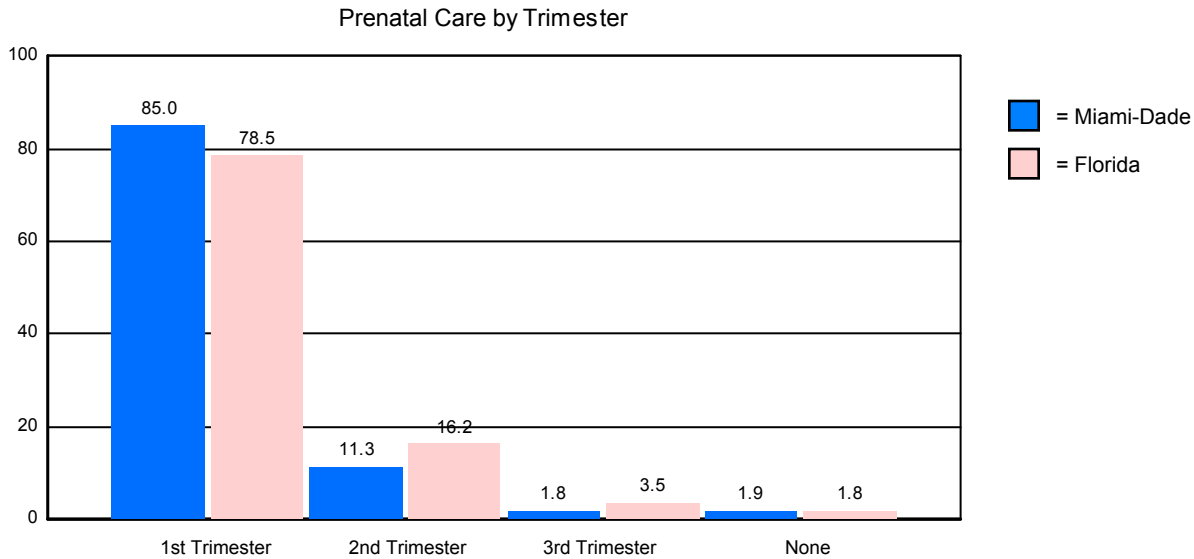
WIC Services

	Persons Eligible for WIC	Percentage Served by WIC
2003		
Miami-Dade	94,674	64.72
Florida	550,426	60.72
2004		
Miami-Dade	94,225	65.55
Florida	538,421	64.27
2005		
Miami-Dade	96,114	68.99
Florida	556,140	67.27

Data Source: Florida Department of Health, WIC & Nutrition Services

Prenatal Care by Trimester of Pregnancy

	1st Trimester	2nd Trimester	3rd Trimester	No Prenatal Care
Miami-Dade	84.97%	11.34%	1.80%	1.88%
Florida	78.54%	16.19%	3.50%	1.76%



Data Source: Florida Department of Health, Office of Vital Statistics

Immunizations Among 2-Year-Old CHD Clients

	Number Immunized		Percentage Immunized	
	Miami-Dade	Florida	Miami-Dade	Florida
2003	1,034	16,675	35.67	64.22
2004	696	18,481	63.22	80.17
2005	579	16,750	70.44	86.02

Data Source: Florida Department of Health, Bureau of Immunizations

**MCH Health Problem Analysis for
Miami-Dade
Calendar Year 2005**

Healthy Start Prenatal Screening and Services

	2003		2004		2005	
	Miami-Dade	Florida	Miami-Dade	Florida	Miami-Dade	Florida
Offered Rate %	70.18	85.76	66.22	87.41	77.13	91.17
Screening Rate %	47.24	51.24	47.16	59.73	59.05	67.36
Consent Rate %	67.32	59.74	71.21	68.33	76.56	73.89

	Number		Percentage	
	Miami-Dade	Florida	Miami-Dade	Florida
Estimated Number of Pregnant Women	32,291	225,115		
Offered Screen	24,905	205,231	77.13	91.17
Consenting to Screen	19,068	151,646	76.56	73.89
Positive Screen + Referred	13,172	96,528	69.08	63.65
Consenting to HS Participation	12,483	91,004	94.77	94.28
Received Initial Contact	8,079	57,381	64.72	63.05
Need Initial Assessment	3,989	33,073	49.37	57.64
Received Initial Assessment	3,604	30,335	90.35	91.72
Need Ongoing Care Coordination	5,354	32,861	66.27	57.27

	Miami-Dade			Florida	
	Clients	Percentage of Clients	Encounters per Client	Services per Encounter	Percentage of Clients
Total Receiving HS Prenatal Service	15,637		4.49	3.58	
Total IC/IA Only	2,472	15.81	2.98	2.77	17.58
Total IC/IA/Other HS Service	416	2.66	2.37	6.88	5.44
Track or Not Face-to-Face	3,819	24.42	4.49	2.92	18.49
Face-to-Face, without FSP	2,818	18.02	6.76	4.78	15.55
Face-to-Face, with FSP	1,075	6.87	11.06	4.55	3.89
Unable to Locate	2,449	15.66	3.39	2.29	12.97
Unable to Complete Initial Contact	410	2.62	3.17	1.93	15.83
Unable to Complete Initial Assessment	1	0.01	1.00	1.00	0.21

	Miami-Dade		
	Clients	Services	Services/Client
Nutritional Assessment and Counseling	801	5,782	7.22
Psychosocial Counseling	1,217	10,462	8.60
Parenting Education	3,043	18,943	6.23
Childbirth Education	1,436	23,653	16.47
Breastfeeding Education	2,663	9,759	3.66
Smoking Cessation Counseling	1,506	4,505	2.99
Interconceptional Education & Counseling	67	156	2.33

Pregnant Drug-Abusing Women

	Clients	Encounters/Client	Services/Encounter
Miami-Dade	128	13.87	4.63
Florida	4,271	7.30	3.80

**MCH Health Problem Analysis for
Miami-Dade
Calendar Year 2005**

Healthy Start Infant Screening and Services

	2003		2004		2005	
	Miami-Dade	Florida	Miami-Dade	Florida	Miami-Dade	Florida
Screening Rate %	78.55	70.85	74.98	69.62	75.59	72.94

	Number		Percentage	
	Miami-Dade	Florida	Miami-Dade	Florida
Total Number of Births	32,291	225,115		
Consenting to Screen	24,409	164,203	75.59	72.94
Positive Screen + Referred	3,346	24,124	13.71	14.69
Consenting to HS Participation	3,318	20,697	99.16	85.79
Received Initial Contact	1,513	31,048	45.60	150.01
Need Initial Assessment	518	16,973	34.24	54.67
Received Initial Assessment	385	15,732	74.32	92.69
Need Ongoing Care Coordination	801	15,590	52.94	50.21

	Miami-Dade			Florida
	Clients	Percentage of Clients	Encounters per Client	Percentage of Clients
Total Receiving HS Infant Service	3,686		7.85	2.59
Total IC/IA Only	644	17.47	2.86	18.99
Total IC/IA/Other HS Service	59	1.60	2.81	3.55
Track or Not Face-to-Face	609	16.52	3.84	14.16
Face-to-Face, without FSP	575	15.60	17.75	13.43
Face-to-Face, with FSP	285	7.73	33.95	4.72
Unable to Locate	493	13.37	4.86	7.50
Unable to Complete Initial Contact	124	3.36	3.32	26.86
Unable to Complete Initial Assessment	2	0.05	1.00	0.21

	Miami-Dade		
	Clients	Services	Services/Client
Nutritional Assessment and Counseling	62	399	6.44
Psychosocial Counseling	342	3,442	10.06
Parenting Education	601	12,620	21.00
Childbirth Education	0	0	0.00
Breastfeeding Education	357	2,116	5.93
Smoking Cessation Counseling	413	1,848	4.47
Interconceptional Education & Counseling	4	5	1.25

Substance-exposed Newborns

	Clients	Encounters/Client	Services/Encounter
Miami-Dade	481	23.72	3.11
Florida	3,819	11.32	3.91