

**MCH Health Problem Analysis for
Gadsden
Calendar Year 2005**

Population

	Gadsden		Florida	
	Number	Percentage	Number	Percentage
Total	47,883		18,018,497	
White	19,947	41.66	14,581,665	80.93
Nonwhite	27,936	58.34	3,436,832	19.07
Black	27,491	57.41	2,949,668	16.37
Other	445	0.93	487,164	2.70

Data Source: Population Estimates from the Florida Legislature, Office of Economic & Demographic Research

Births

	Gadsden		Florida	
	Number	Percentage	Number	Percentage
Total	741		226,219	
White *	278	37.52	166,181	73.46
Black *	450	60.73	47,957	21.20
Other *	12	1.62	11,651	5.15
Hispanic **	119	16.06	63,757	28.18
Non-Hispanic **	621	83.81	161,615	71.44

*Regardless of ethnicity. Does not include persons whose race is unknown.

**Regardless of race. Does not include persons whose ethnicity is unknown.

Data Source: Florida Department of Health, Office of Vital Statistics

Infant Deaths - Actual vs Expected

Total Births	Actual Infant Deaths	Expected Infant Deaths	Significance
741	10	7.60	N
		Actual Infant Death Rate per 1,000 Births	Expected Infant Death Rate per 1,000 Births
		13.50	10.26

H=Actual Rate is Significantly Higher than the Expected Rate

L=Actual Rate is Significantly Lower than the Expected Rate

N=Actual Rate is Not Significantly Different than the Expected Rate

Data Source: Department of Health - Infant, Maternal and Reproductive Health using Florida Vital Statistics data

Low Birthweight - Actual vs Expected

Total Births	Actual LBW Births	Expected LBW Births	Significance
741	95	83.10	N
		Actual Percent LBW	Expected Percent LBW
		12.82	11.21

H=Actual Rate is Significantly Higher than the Expected Rate

L=Actual Rate is Significantly Lower than the Expected Rate

N=Actual Rate is Not Significantly Different than the Expected Rate

Data Source: Department of Health - Infant, Maternal and Reproductive Health using Florida Vital Statistics data

MCH Health Problem Analysis for Gadsden Calendar Year 2005

Deaths Due to Leading Causes of Infant Mortality

Perinatal Conditions	7	Unintentional Injury	1
Congenital Anomalies	0	Heart Disease	0
Sudden Infant Death Syndrome	0	Other Causes	2

Data Source: Florida Department of Health, Office of Vital Statistics

Infant Mortality

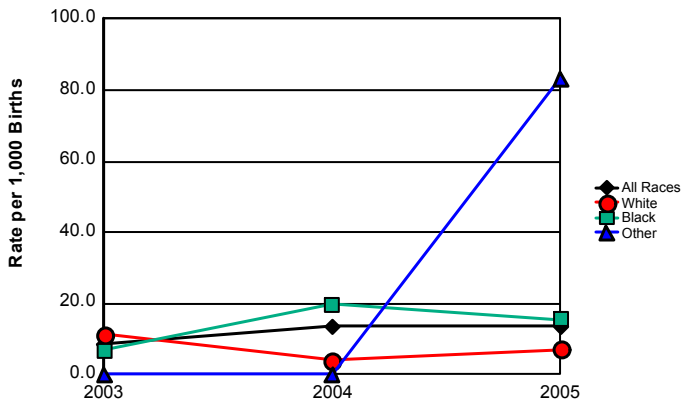
	2003		2004		2005		Comparison to Previous Year	Comparison to Florida Rate
	Gadsden	Florida	Gadsden	Florida	Gadsden	Florida		
Total	6	1,584	9	1,536	10	1,626	Increased	
Rate per 1000	8.5	7.5	13.5	7.0	13.5	7.2	Same	Above
White *	3	907	1	876	2	882	Increased	
Rate per 1000	11.4	5.8	3.9	5.5	7.2	5.3	Increased	Above
Black *	3	647	8	621	7	652	Decreased	
Rate per 1000	6.8	13.7	19.8	13.2	15.6	13.6	Decreased	Above
Other *	0	27	0	38	1	91	Increased	
Rate per 1000	0.0	3.6	0.0	3.6	83.3	7.8	Increased	Above
Hispanic **	2	273	1	242	2	373	Increased	
Rate per 1000	18.5	5.0	8.6	4.1	16.8	5.9	Increased	Above
Non-Hispanic **	4	1,256	8	1,244	8	1,246	Same	
Rate per 1000	6.7	8.0	14.5	7.8	12.9	7.7	Decreased	Above

* Regardless of ethnicity. Does not include persons whose race is unknown.

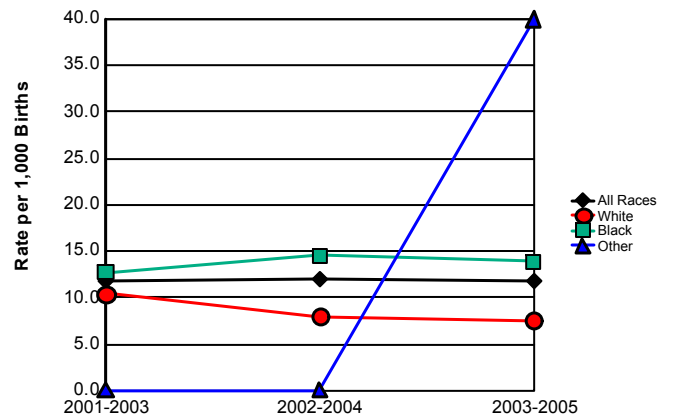
** Regardless of race. Does not include persons whose ethnicity is unknown.

Data Source: Florida Department of Health, Office of Vital Statistics

Infant Mortality Rates



**Infant Mortality Trend
Three-Year Rolling Averages**



	2003	2004	2005
All Races	8.5	13.5	13.5
White	11.4	3.9	7.2
Black	6.8	19.8	15.6
Other	0.0	0.0	83.3

	2001-2003	2002-2004	2003-2005
All Races	11.8	12.0	11.8
White	10.5	8.0	7.5
Black	12.7	14.5	13.9
Other	0.0	0.0	40.0

MCH Health Problem Analysis for Gadsden Calendar Year 2005

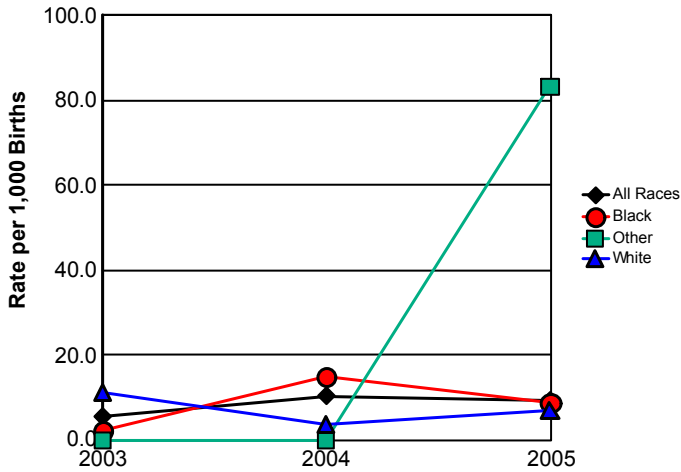
Neonatal Mortality

	2003		2004		2005		Comparison to Previous Year Same	Comparison to Florida Rate
	Gadsden	Florida	Gadsden	Florida	Gadsden	Florida		
Total	4	1,025	7	989	7	1,024		
Rate per 1000	5.6	4.8	10.5	4.5	9.4	4.5	Decreased	Above
White *	3	584	1	563	2	544	Increased	
Rate per 1000	11.4	3.7	3.9	3.5	7.2	3.3	Increased	Above
Black *	1	420	6	401	4	422	Decreased	
Rate per 1000	2.3	8.9	14.8	8.5	8.9	8.8	Decreased	Above
Other *	0	18	0	24	1	57	Increased	
Rate per 1000	0.0	2.4	0.0	2.3	83.3	4.9	Increased	Above
Hispanic **	2	186	1	146	2	245	Increased	
Rate per 1000	18.5	3.4	8.6	2.5	16.8	3.8	Increased	Above
Non-Hispanic **	2	792	6	801	5	773	Decreased	
Rate per 1000	3.3	5.0	10.9	5.0	8.1	4.8	Decreased	Above

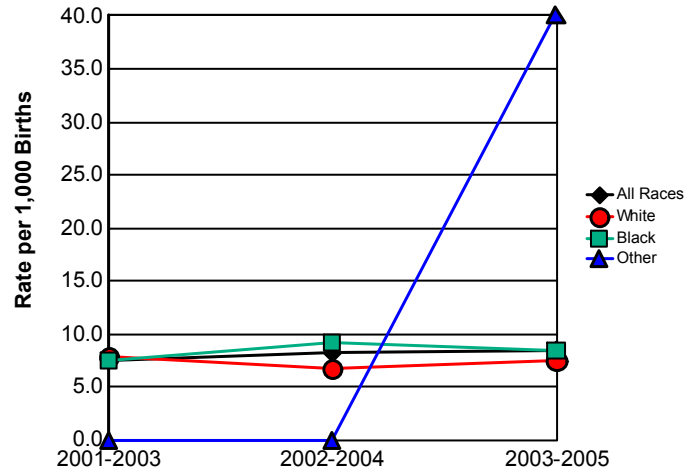
*Regardless of ethnicity. Does not include persons whose race is unknown.
**Regardless of race. Does not include persons whose ethnicity is

Data Source: Florida Department of Health, Office of Vital Statistics

Neonatal Mortality Rates



Neonatal Mortality Trend Three-Year Rolling Averages



	2003	2004	2005
All Races	5.6	10.5	9.4
White	11.4	3.9	7.2
Black	2.3	14.8	8.9
Other	0.0	0.0	83.3

	2001-2003	2002-2004	2003-2005
All Races	7.6	8.2	8.5
White	7.9	6.7	7.5
Black	7.5	9.2	8.5
Other	0.0	0.0	40.0

MCH Health Problem Analysis for Gadsden Calendar Year 2005

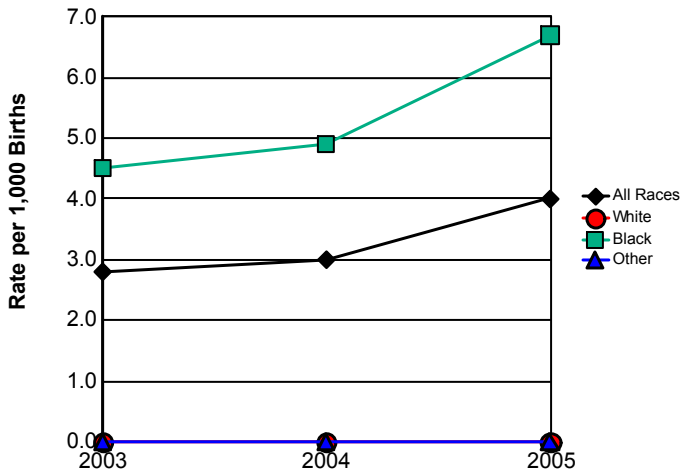
Postneonatal Mortality

	2003		2004		2005		Comparison to Previous Year	Comparison to Florida Rate
	Gadsden	Florida	Gadsden	Florida	Gadsden	Florida		
Total	2	559	2	547	3	602	Increased	
Rate per 1000	2.8	2.6	3.0	2.5	4.0	2.7	Increased	Above
White *	0	323	0	313	0	338	Same	
Rate per 1000	0.0	2.1	0.0	2.0	0.0	2.0	Same	Below
Black *	2	227	2	220	3	230	Increased	
Rate per 1000	4.5	4.8	4.9	4.7	6.7	4.8	Increased	Above
Other *	0	9	0	14	0	34	Same	
Rate per 1000	0.0	1.2	0.0	1.3	0.0	2.9	Same	Below
Hispanic **	0	87	0	96	0	128	Same	
Rate per 1000	0.0	1.6	0.0	1.6	0.0	2.0	Same	Below
Non-Hispanic **	2	464	2	443	3	473	Increased	
Rate per 1000	3.3	3.0	3.6	2.8	4.8	2.9	Increased	Above

*Regardless of ethnicity. Does not include persons whose race is unknown.
 ** Regardless of race. Does not include persons whose ethnicity is unknown.

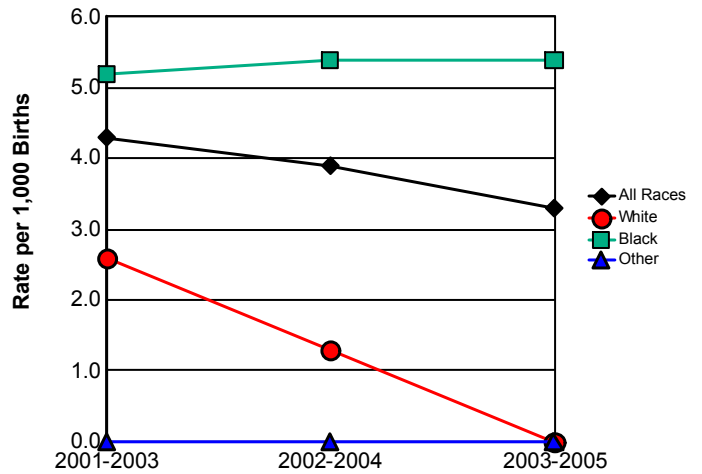
Data Source: Florida Department of Health, Office of Vital Statistics

Postneonatal Mortality Rates



	2003	2004	2005
All Races	2.8	3.0	4.0
White	0.0	0.0	0.0
Black	4.5	4.9	6.7
Other	0.0	0.0	0.0

Postneonatal Mortality Trend Three-Year Rolling Averages



	2001-2003	2002-2004	2003-2005
All Races	4.3	3.9	3.3
White	2.6	1.3	0.0
Black	5.2	5.4	5.4
Other	0.0	0.0	0.0

MCH Health Problem Analysis for Gadsden Calendar Year 2005

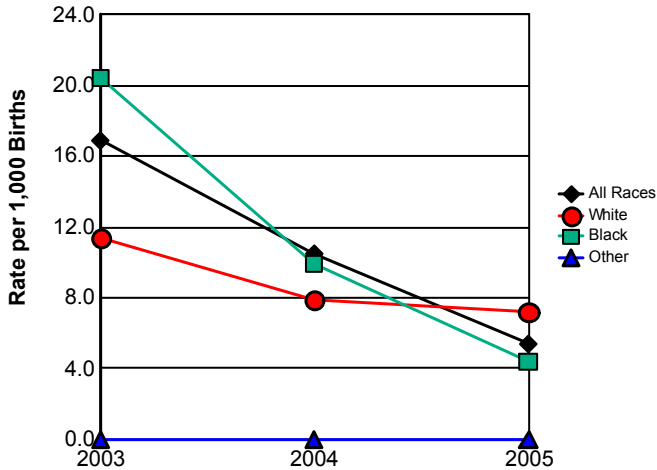
Fetal Mortality

	2003		2004		2005		Comparison to Previous Year	Comparison to Florida Rate
	Gadsden	Florida	Gadsden	Florida	Gadsden	Florida		
Total	12	1,604	7	1,701	4	1,650	Decreased	
Rate per 1000	16.9	7.6	10.5	7.8	5.4	7.3	Decreased	Below
White *	3	912	2	966	2	938	Same	
Rate per 1000	11.4	5.8	7.9	6.0	7.2	5.6	Decreased	Above
Black *	9	643	4	680	2	649	Decreased	
Rate per 1000	20.4	13.6	9.9	14.5	4.4	13.5	Decreased	Below
Other *	0	35	0	43	0	39	Same	
Rate per 1000	0.0	4.7	0.0	4.1	0.0	3.3	Same	Below
Hispanic **	1	264	1	328	1	309	Same	
Rate per 1000	9.3	4.8	8.6	5.6	8.4	4.8	Decreased	Above
Non-Hispanic **	11	1,220	5	1,243	3	1,172	Decreased	
Rate per 1000	18.3	7.8	9.1	7.8	4.8	7.3	Decreased	Below

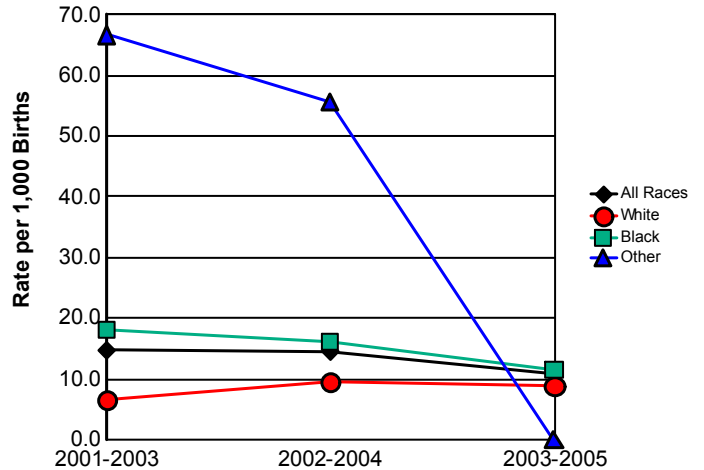
* Regardless of ethnicity. Does not include persons whose race is unknown.

Data Source: Florida Department of Health, Office of Vital Statistics

Fetal Mortality Rates



Fetal Mortality Trend Three-Year Rolling Averages



	2003	2004	2005
All Races	16.9	10.5	5.4
White	11.4	7.9	7.2
Black	20.4	9.9	4.4
Other	0.0	0.0	0.0

	2001-2003	2002-2004	2003-2005
All Races	14.7	14.5	10.9
White	6.6	9.4	8.8
Black	18.0	16.1	11.6
Other	66.7	55.6	0.0

MCH Health Problem Analysis for Gadsden Calendar Year 2005

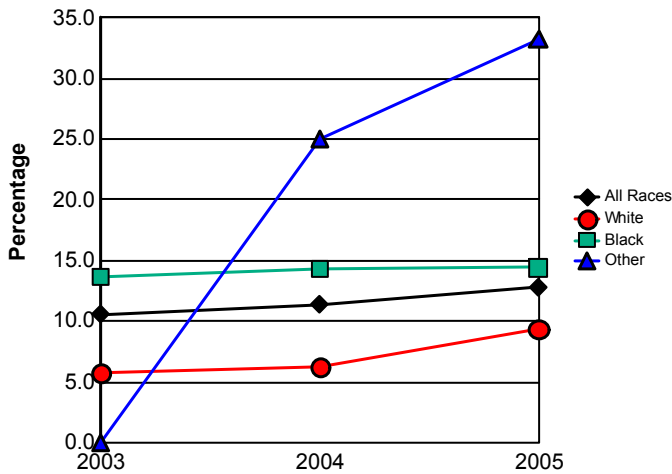
Low Birthweight

	2003		2004		2005		Comparison to Previous Year	Comparison to Florida Rate
	Gadsden	Florida	Gadsden	Florida	Gadsden	Florida		
Total	75	18,047	76	18,670	95	19,802	Increased	
Percentage	10.6	8.5	11.4	8.6	12.8	8.8	Increased	Above
White *	15	11,190	16	11,570	26	12,221	Increased	
Percentage	5.7	7.1	6.3	7.2	9.4	7.4	Increased	Above
Black *	60	6,203	58	6,134	65	6,521	Increased	
Percentage	13.6	13.2	14.3	13.1	14.4	13.6	Increased	Above
Other *	0	624	2	923	4	1,025	Increased	
Percentage	0.0	8.4	25.0	8.8	33.3	8.8	Increased	Above
Hispanic **	6	3,795	5	4,100	10	4,493	Increased	
Percentage	5.6	6.9	4.3	7.0	8.4	7.0	Increased	Above
Non-Hispanic **	69	14,212	71	14,459	85	15,210	Increased	
Percentage	11.5	9.0	12.9	9.1	13.7	9.4	Increased	Above

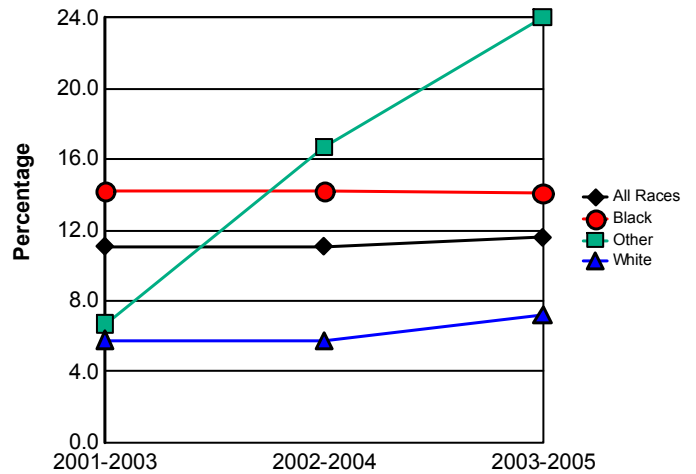
* Regardless of ethnicity. Does not include persons whose race is unknown.

Data Source: Florida Department of Health, Office of Vital Statistics

Percentage of Low Birthweight Births



Low Birthweight Births Trend Three-Year Rolling Averages



	2003	2004	2005
All Races	10.6	11.4	12.8
White	5.7	6.3	9.4
Black	13.6	14.3	14.4
Other	0.0	25.0	33.3

	2001-2003	2002-2004	2003-2005
All Races	11.1	11.1	11.6
White	5.8	5.7	7.2
Black	14.2	14.2	14.1
Other	6.7	16.7	24.0

MCH Health Problem Analysis for Gadsden Calendar Year 2005

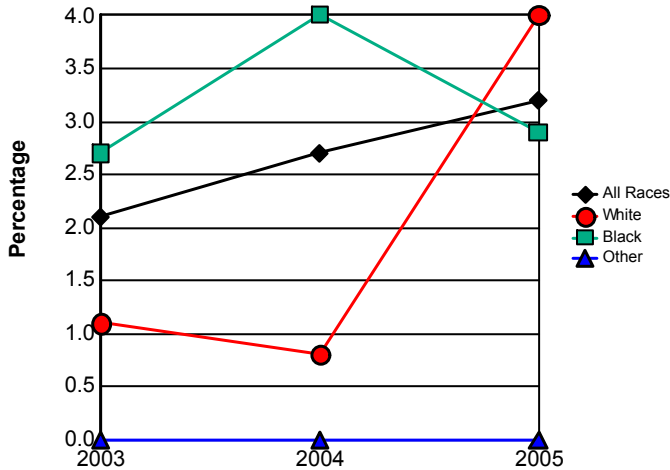
Very Low Birthweight

	2003		2004		2005		Comparison to Previous Year	Comparison to Florida Rate
	Gadsden	Florida	Gadsden	Florida	Gadsden	Florida		
Total	15	3,319	18	3,491	24	3,637	Increased	
Percentage	2.1	1.6	2.7	1.6	3.2	1.6	Increased	Above
White *	3	1,841	2	1,862	11	1,960	Increased	
Percentage	1.1	1.2	0.8	1.2	4.0	1.2	Increased	Above
Black *	12	1,365	16	1,470	13	1,507	Decreased	
Percentage	2.7	2.9	4.0	3.1	2.9	3.1	Decreased	Below
Other *	0	103	0	139	0	162	Same	
Percentage	0.0	1.4	0.0	1.3	0.0	1.4	Same	Below
Hispanic **	0	0	0	0	0	0	Same	
Percentage	0.0	0.0	0.0	0.0	0.0	0.0	Same	Same
Non-Hispanic **	13	2,621	16	2,775	23	2,826	Increased	
Percentage	2.2	1.7	2.9	1.7	3.7	1.7	Increased	Above

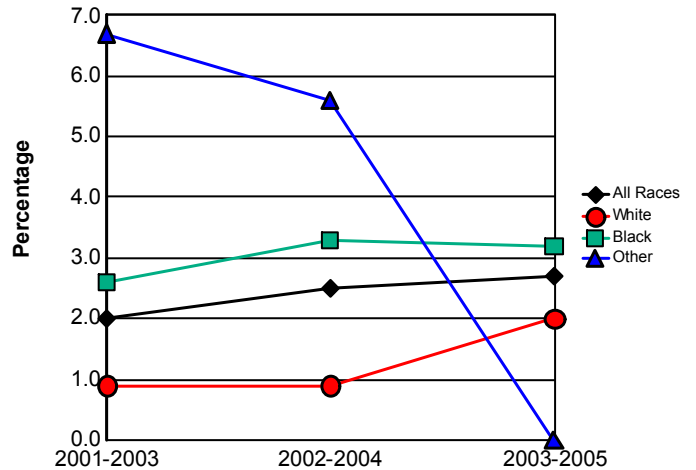
*Regardless of ethnicity. Does not include persons whose race is unknown.

Data Source: Florida Department of Health, Office of Vital Statistics

Percentage of Very Low Birthweight Births



Very Low Birthweight Trend Three-Year Rolling Averages



	2003	2004	2005
All Races	2.1	2.7	3.2
White	1.1	0.8	4.0
Black	2.7	4.0	2.9
Other	0.0	0.0	0.0

	2001-2003	2002-2004	2003-2005
All Races	2.0	2.5	2.7
White	0.9	0.9	2.0
Black	2.6	3.3	3.2
Other	6.7	5.6	0.0

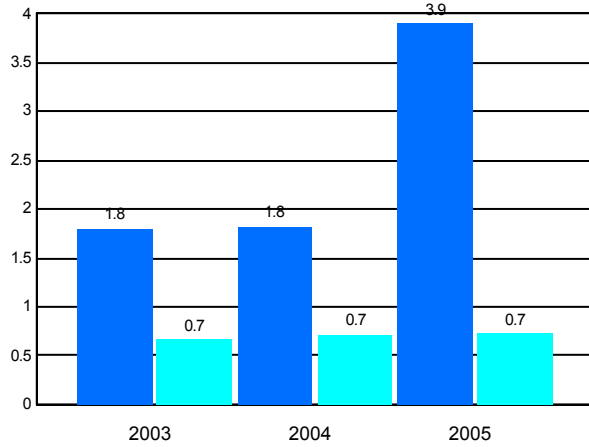
MCH Health Problem Analysis for Gadsden Calendar Year 2005

Births to Teens

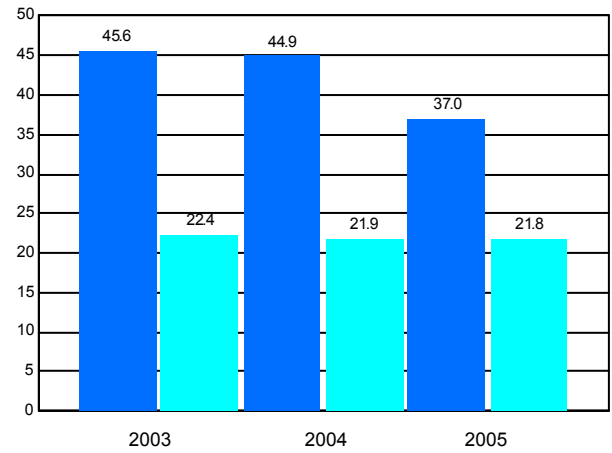
	2003		2004		2005		Comparison to Previous
	Gadsden	Florida	Gadsden	Florida	Gadsden	Florida	
Mothers 10-14							
Number	3	362	3	404	6	415	
Rate per 1,000	1.8	0.7	1.8	0.7	3.9	0.7	Increased
Mothers 15-17							
Number	47	7,227	44	7,436	38	7,590	
Rate per 1,000	45.6	22.4	44.9	21.9	37.0	21.8	Decreased
Percentage of Repeat Births 15-19	13.4	15.2	12.6	15.4	13.0	16.1	Increased

Data Source: Florida Department of Health, Office of Vital Statistics

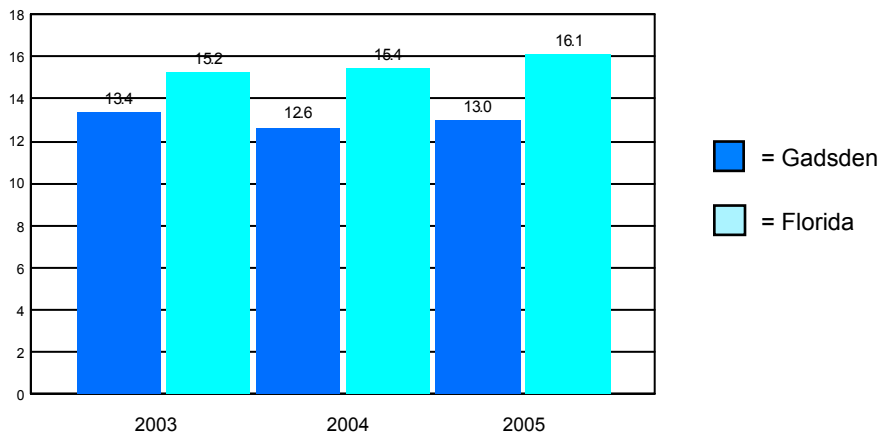
Births to Teens 10-14



Births to Teens 15-17



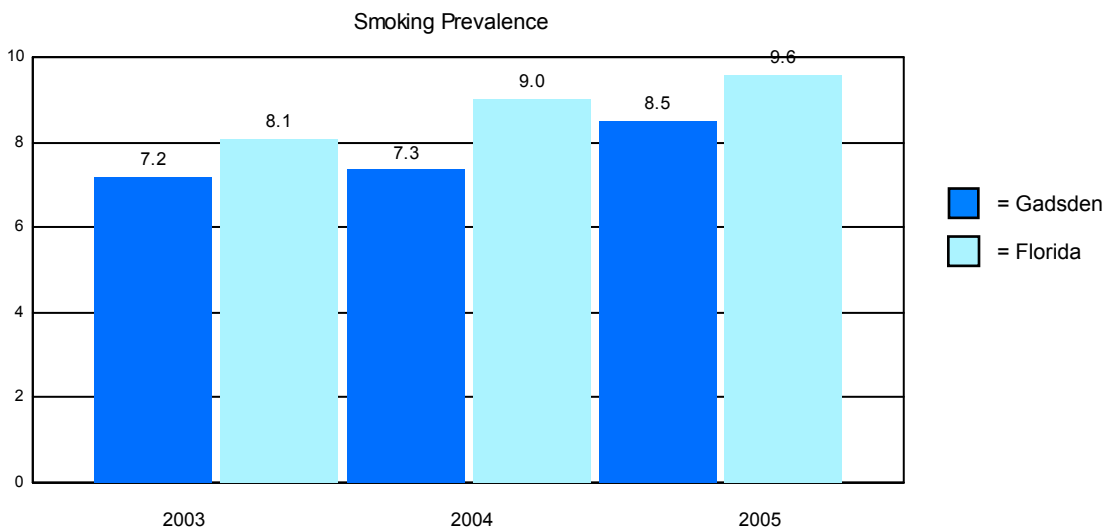
Repeat Births to Teens 15-19



MCH Health Problem Analysis for Gadsden Calendar Year 2005

Reported Smoking Prevalence in Pregnancy

	Mothers Who Smoked	Percentage of Births
2003		
Gadsden	51	7.18
Florida	17,165	8.09
2004		
Gadsden	49	7.35
Florida	19,668	9.02
2005		
Gadsden	63	8.50
Florida	21,687	9.59



Data Source: Florida Department of Health, Office of Vital Statistics

Pediatric AIDS Cases Among Persons 0 - 4 Years of Age

	2003	2004	2005
Gadsden	0	0	0
Florida	17	11	6

Data Source: Florida Department of Health, Bureau of HIV/AIDS

CHD Prenatal Care Clients Offered HIV Testing

2003		2004		2005	
Gadsden	Florida	Gadsden	Florida	Gadsden	Florida
64.57%	86.33%	39.30%	86.34%	64.01%	83.60%

**MCH Health Problem Analysis for
Gadsden
Calendar Year 2005**

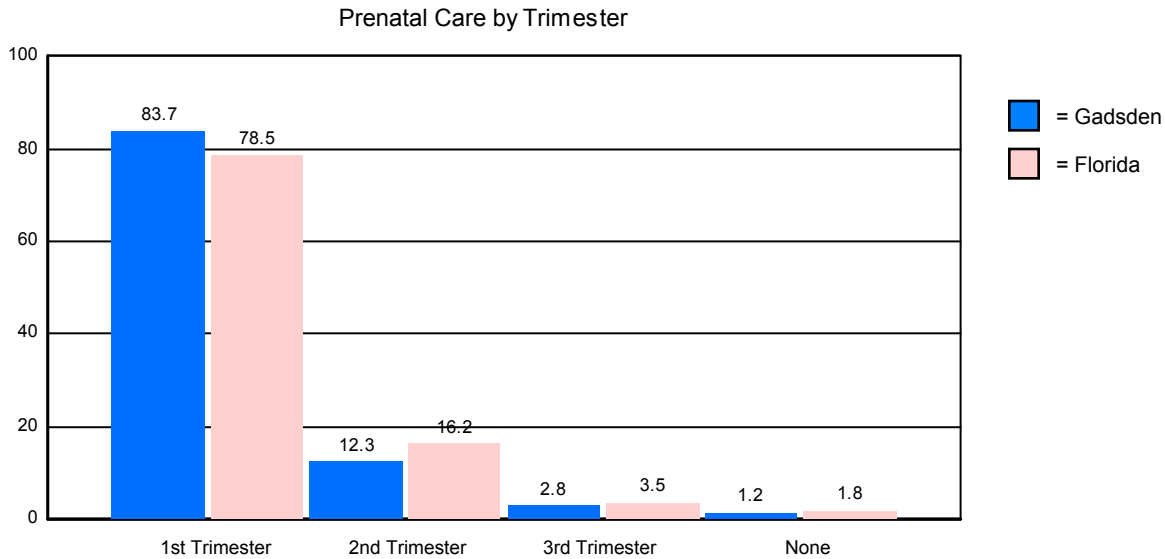
WIC Services

	Persons Eligible for WIC	Percentage Served by WIC
2003		
Gadsden	2,738	78.82
Florida	550,426	60.72
2004		
Gadsden	2,682	73.38
Florida	538,421	64.27
2005		
Gadsden	2,751	76.44
Florida	556,140	67.27

Data Source: Florida Department of Health, WIC & Nutrition Services

Prenatal Care by Trimester of Pregnancy

	1st Trimester	2nd Trimester	3rd Trimester	No Prenatal Care
Gadsden	83.72%	12.34%	2.80%	1.15%
Florida	78.54%	16.19%	3.50%	1.76%



Data Source: Florida Department of Health, Office of Vital Statistics

Immunizations Among 2-Year-Old CHD Clients

	Number Immunized		Percentage Immunized	
	Gadsden	Florida	Gadsden	Florida
2003	72	16,675	61.02	64.22
2004	109	18,481	85.16	80.17
2005	161	16,750	98.77	86.02

Data Source: Florida Department of Health, Bureau of Immunizations

**MCH Health Problem Analysis for
Gadsden
Calendar Year 2005**

Healthy Start Prenatal Screening and Services

	2003		2004		2005	
	Gadsden	Florida	Gadsden	Florida	Gadsden	Florida
Offered Rate %	86.22	85.76	100.60	87.41	98.91	91.17
Screening Rate %	62.36	51.24	78.95	59.73	78.64	67.36
Consent Rate %	72.32	59.74	78.48	68.33	79.50	73.89

	Number		Percentage	
	Gadsden	Florida	Gadsden	Florida
Estimated Number of Pregnant Women	735	225,115		
Offered Screen	727	205,231	98.91	91.17
Consenting to Screen	578	151,646	79.50	73.89
Positive Screen + Referred	392	96,528	67.82	63.65
Consenting to HS Participation	353	91,004	90.05	94.28
Received Initial Contact	218	57,381	61.76	63.05
Need Initial Assessment	159	33,073	72.94	57.64
Received Initial Assessment	141	30,335	88.68	91.72
Need Ongoing Care Coordination	174	32,861	79.82	57.27

	Gadsden			Florida
	Clients	Percentage of Clients	Encounters per Client	Percentage of Clients
Total Receiving HS Prenatal Service	431		4.76	
Total IC/IA Only	18	4.18	4.17	17.58
Total IC/IA/Other HS Service	6	1.39	4.83	5.44
Track or Not Face-to-Face	105	24.36	4.30	18.49
Face-to-Face, without FSP	115	26.68	6.17	15.55
Face-to-Face, with FSP	23	5.34	10.61	3.89
Unable to Locate	121	28.07	3.45	12.97
Unable to Complete Initial Contact	22	5.10	3.95	15.83
Unable to Complete Initial Assessment	0	0.00	0.00	0.21

	Gadsden		
	Clients	Services	Services/Client
Nutritional Assessment and Counseling	0	0	0.00
Psychosocial Counseling	83	345	4.16
Parenting Education	185	420	2.27
Childbirth Education	10	513	51.30
Breastfeeding Education	23	23	1.00
Smoking Cessation Counseling	20	25	1.25
Interconceptional Education & Counseling	0	0	0.00

Pregnant Drug-Abusing Women

	Clients	Encounters/Client	Services/Encounter
Gadsden	0	0.00	0.00
Florida	4,271	7.30	3.80

**MCH Health Problem Analysis for
Gadsden
Calendar Year 2005**

Healthy Start Infant Screening and Services

	2003		2004		2005	
	Gadsden	Florida	Gadsden	Florida	Gadsden	Florida
Screening Rate %	92.90	70.85	91.73	69.62	93.74	72.94

	Number		Percentage	
	Gadsden	Florida	Gadsden	Florida
Total Number of Births	735	225,115		
Consenting to Screen	689	164,203	93.74	72.94
Positive Screen + Referred	149	24,124	21.63	14.69
Consenting to HS Participation	146	20,697	97.99	85.79
Received Initial Contact	89	31,048	60.96	150.01
Need Initial Assessment	41	16,973	46.07	54.67
Received Initial Assessment	31	15,732	75.61	92.69
Need Ongoing Care Coordination	56	15,590	62.92	50.21

	Gadsden				Florida
	Clients	Percentage of Clients	Encounters per Client	Services per Encounter	Percentage of Clients
Total Receiving HS Infant Service	247		3.38	2.44	
Total IC/IA Only	19	7.69	2.47	1.89	18.99
Total IC/IA/Other HS Service	6	2.43	1.83	5.45	3.55
Track or Not Face-to-Face	61	24.70	3.31	2.89	14.16
Face-to-Face, without FSP	33	13.36	4.52	3.37	13.43
Face-to-Face, with FSP	6	2.43	9.33	3.77	4.72
Unable to Locate	95	38.46	3.21	1.68	7.50
Unable to Complete Initial Contact	15	6.07	2.67	1.10	26.86
Unable to Complete Initial Assessment	0	0.00	0.00	0.00	0.21

	Gadsden		
	Clients	Services	Services/Client
Nutritional Assessment and Counseling	1	1	1.00
Psychosocial Counseling	8	10	1.25
Parenting Education	74	182	2.46
Childbirth Education	0	0	0.00
Breastfeeding Education	2	2	1.00
Smoking Cessation Counseling	2	3	1.50
Interconceptional Education & Counseling	1	1	1.00

Substance-exposed Newborns

	Clients	Encounters/Client	Services/Encounter
Gadsden	0	0.00	0.00
Florida	3,819	11.32	3.91