

**MCH Health Problem Analysis for
Duval
Calendar Year 2005**

Population

	Duval		Florida	
	Number	Percentage	Number	Percentage
Total	865,965		18,018,497	
White	564,459	65.18	14,581,665	80.93
Nonwhite	301,506	34.82	3,436,832	19.07
Black	267,167	30.85	2,949,668	16.37
Other	34,339	3.97	487,164	2.70

Data Source: Population Estimates from the Florida Legislature, Office of Economic & Demographic Research

Births

	Duval		Florida	
	Number	Percentage	Number	Percentage
Total	12,974		226,219	
White *	7,597	58.56	166,181	73.46
Black *	4,449	34.29	47,957	21.20
Other *	919	7.08	11,651	5.15
Hispanic **	1,146	8.83	63,757	28.18
Non-Hispanic **	11,788	90.86	161,615	71.44

*Regardless of ethnicity. Does not include persons whose race is unknown.

**Regardless of race. Does not include persons whose ethnicity is unknown.

Data Source: Florida Department of Health, Office of Vital Statistics

Infant Deaths - Actual vs Expected

Total Births	Actual Infant Deaths	Expected Infant Deaths	Significance
12,974	150	104.50	H
		Actual Infant Death Rate per 1,000 Births	Expected Infant Death Rate per 1,000 Births
		11.56	8.05

H=Actual Rate is Significantly Higher than the Expected Rate

L=Actual Rate is Significantly Lower than the Expected Rate

N=Actual Rate is Not Significantly Different than the Expected Rate

Data Source: Department of Health - Infant, Maternal and Reproductive Health using Florida Vital Statistics data

Low Birthweight - Actual vs Expected

Total Births	Actual LBW Births	Expected LBW Births	Significance
12,974	1,251	1,226.40	N
		Actual Percent LBW	Expected Percent LBW
		9.64	9.45

H=Actual Rate is Significantly Higher than the Expected Rate

L=Actual Rate is Significantly Lower than the Expected Rate

N=Actual Rate is Not Significantly Different than the Expected Rate

Data Source: Department of Health - Infant, Maternal and Reproductive Health using Florida Vital Statistics data

MCH Health Problem Analysis for Duval Calendar Year 2005

Deaths Due to Leading Causes of Infant Mortality

Perinatal Conditions	80	Unintentional Injury	5
Congenital Anomalies	22	Heart Disease	1
Sudden Infant Death Syndrome	5	Other Causes	37

Data Source: Florida Department of Health, Office of Vital Statistics

Infant Mortality

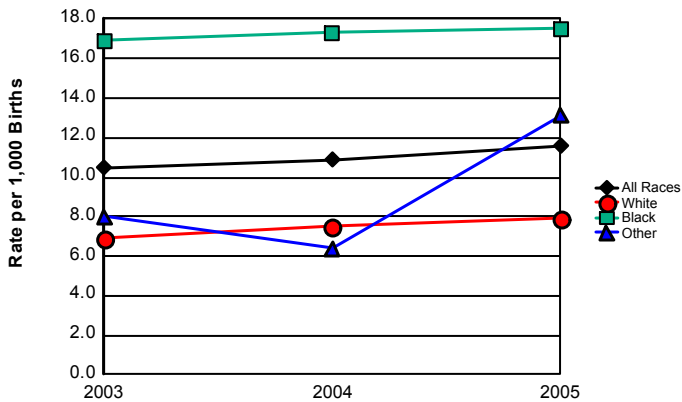
	2003		2004		2005		Comparison to Previous Year	Comparison to Florida Rate
	Duval	Florida	Duval	Florida	Duval	Florida		
Total	130	1,584	138	1,536	150	1,626	Increased	
Rate per 1000	10.5	7.5	10.9	7.0	11.6	7.2	Increased	Above
White *	51	907	56	876	60	882	Increased	
Rate per 1000	6.9	5.8	7.5	5.5	7.9	5.3	Increased	Above
Black *	74	647	77	621	78	652	Increased	
Rate per 1000	16.9	13.7	17.3	13.2	17.5	13.6	Increased	Above
Other *	5	27	5	38	12	91	Increased	
Rate per 1000	8.0	3.6	6.4	3.6	13.1	7.8	Increased	Above
Hispanic **	2	273	6	242	11	373	Increased	
Rate per 1000	2.4	5.0	6.6	4.1	9.6	5.9	Increased	Above
Non-Hispanic **	127	1,256	132	1,244	139	1,246	Increased	
Rate per 1000	11.0	8.0	11.3	7.8	11.8	7.7	Increased	Above

* Regardless of ethnicity. Does not include persons whose race is unknown.

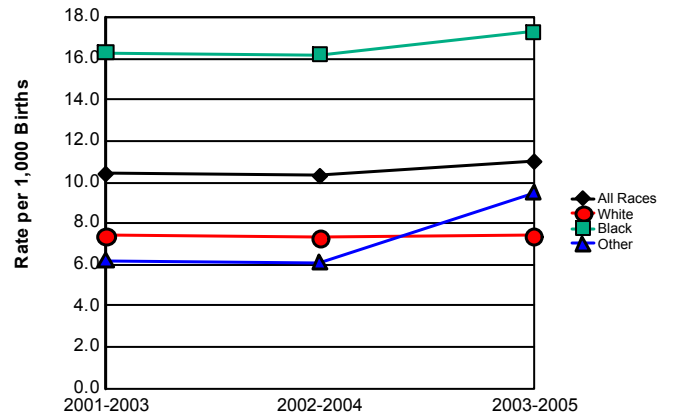
** Regardless of race. Does not include persons whose ethnicity is unknown.

Data Source: Florida Department of Health, Office of Vital Statistics

Infant Mortality Rates



Infant Mortality Trend Three-Year Rolling Averages



	2003	2004	2005
All Races	10.5	10.9	11.6
White	6.9	7.5	7.9
Black	16.9	17.3	17.5
Other	8.0	6.4	13.1

	2001-2003	2002-2004	2003-2005
All Races	10.4	10.3	11.0
White	7.4	7.3	7.4
Black	16.3	16.2	17.3
Other	6.2	6.1	9.5

MCH Health Problem Analysis for Duval Calendar Year 2005

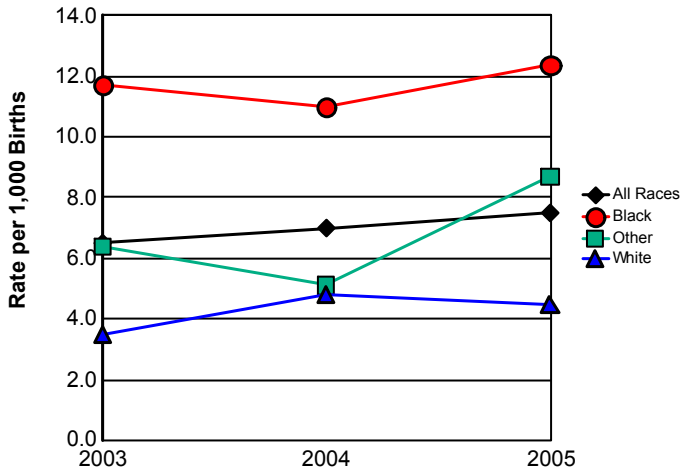
Neonatal Mortality

	2003		2004		2005		Comparison to Previous Year	Comparison to Florida Rate
	Duval	Florida	Duval	Florida	Duval	Florida		
Total	81	1,025	89	989	97	1,024	Increased	
Rate per 1000	6.5	4.8	7.0	4.5	7.5	4.5	Increased	Above
White *	26	584	36	563	34	544	Decreased	
Rate per 1000	3.5	3.7	4.8	3.5	4.5	3.3	Decreased	Above
Black *	51	420	49	401	55	422	Increased	
Rate per 1000	11.7	8.9	11.0	8.5	12.4	8.8	Increased	Above
Other *	4	18	4	24	8	57	Increased	
Rate per 1000	6.4	2.4	5.1	2.3	8.7	4.9	Increased	Above
Hispanic **	2	186	4	146	9	245	Increased	
Rate per 1000	2.4	3.4	4.4	2.5	7.9	3.8	Increased	Above
Non-Hispanic **	78	792	85	801	88	773	Increased	
Rate per 1000	6.7	5.0	7.3	5.0	7.5	4.8	Increased	Above

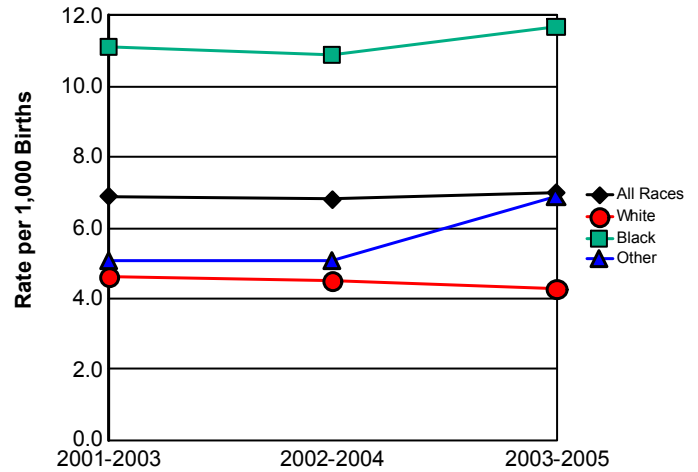
*Regardless of ethnicity. Does not include persons whose race is unknown.
**Regardless of race. Does not include persons whose ethnicity is

Data Source: Florida Department of Health, Office of Vital Statistics

Neonatal Mortality Rates



Neonatal Mortality Trend Three-Year Rolling Averages



	2003	2004	2005
All Races	6.5	7.0	7.5
White	3.5	4.8	4.5
Black	11.7	11.0	12.4
Other	6.4	5.1	8.7

	2001-2003	2002-2004	2003-2005
All Races	6.9	6.8	7.0
White	4.6	4.5	4.3
Black	11.1	10.9	11.7
Other	5.1	5.1	6.9

MCH Health Problem Analysis for Duval Calendar Year 2005

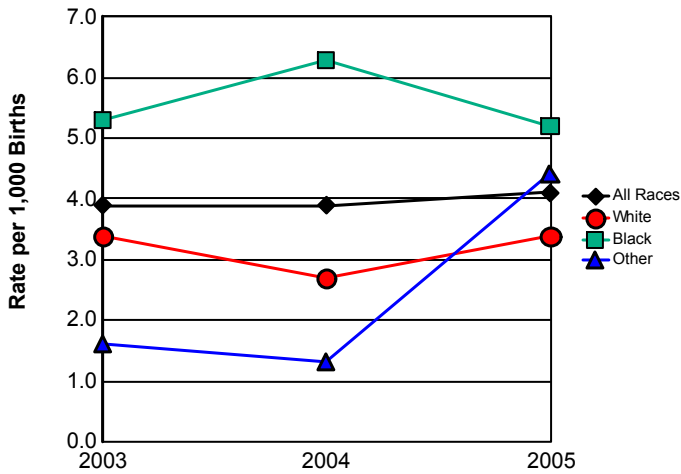
Postneonatal Mortality

	2003		2004		2005		Comparison to Previous Year	Comparison to Florida Rate
	Duval	Florida	Duval	Florida	Duval	Florida		
Total	49	559	49	547	53	602	Increased	
Rate per 1000	3.9	2.6	3.9	2.5	4.1	2.7	Increased	Above
White *	25	323	20	313	26	338	Increased	
Rate per 1000	3.4	2.1	2.7	2.0	3.4	2.0	Increased	Above
Black *	23	227	28	220	23	230	Decreased	
Rate per 1000	5.3	4.8	6.3	4.7	5.2	4.8	Decreased	Above
Other *	1	9	1	14	4	34	Increased	
Rate per 1000	1.6	1.2	1.3	1.3	4.4	2.9	Increased	Above
Hispanic **	0	87	2	96	2	128	Same	
Rate per 1000	0.0	1.6	2.2	1.6	1.7	2.0	Decreased	Below
Non-Hispanic **	49	464	47	443	51	473	Increased	
Rate per 1000	4.2	3.0	4.0	2.8	4.3	2.9	Increased	Above

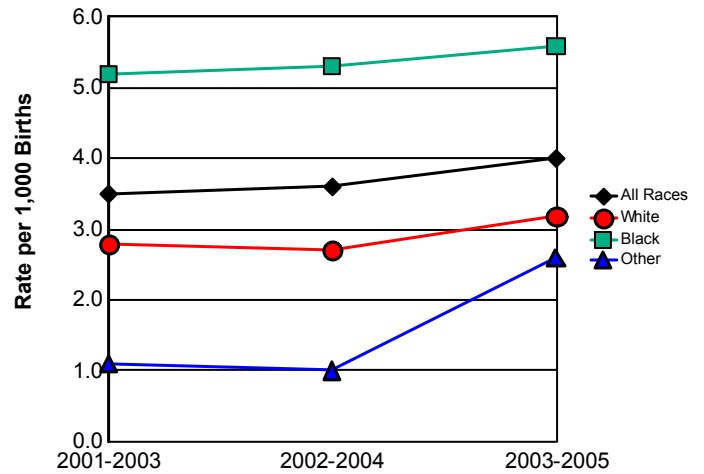
*Regardless of ethnicity. Does not include persons whose race is unknown.
 ** Regardless of race. Does not include persons whose ethnicity is unknown.

Data Source: Florida Department of Health, Office of Vital Statistics

Postneonatal Mortality Rates



Postneonatal Mortality Trend Three-Year Rolling Averages



	2003	2004	2005
All Races	3.9	3.9	4.1
White	3.4	2.7	3.4
Black	5.3	6.3	5.2
Other	1.6	1.3	4.4

	2001-2003	2002-2004	2003-2005
All Races	3.5	3.6	4.0
White	2.8	2.7	3.2
Black	5.2	5.3	5.6
Other	1.1	1.0	2.6

MCH Health Problem Analysis for Duval Calendar Year 2005

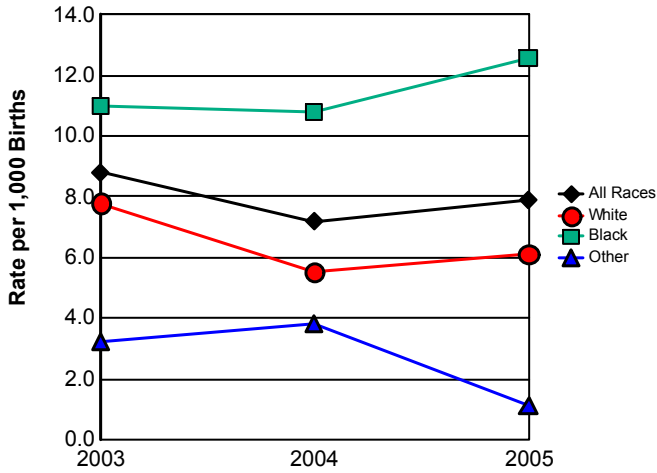
Fetal Mortality

	2003		2004		2005		Comparison to Previous Year	Comparison to Florida Rate
	Duval	Florida	Duval	Florida	Duval	Florida		
Total	109	1,604	92	1,701	103	1,650	Increased	
Rate per 1000	8.8	7.6	7.2	7.8	7.9	7.3	Increased	Above
White *	58	912	41	966	46	938	Increased	
Rate per 1000	7.8	5.8	5.5	6.0	6.1	5.6	Increased	Above
Black *	48	643	48	680	56	649	Increased	
Rate per 1000	11.0	13.6	10.8	14.5	12.6	13.5	Increased	Below
Other *	2	35	3	43	1	39	Decreased	
Rate per 1000	3.2	4.7	3.8	4.1	1.1	3.3	Decreased	Below
Hispanic **	2	264	7	328	8	309	Increased	
Rate per 1000	2.4	4.8	7.7	5.6	7.0	4.8	Decreased	Above
Non-Hispanic **	106	1,220	85	1,243	95	1,172	Increased	
Rate per 1000	9.1	7.8	7.3	7.8	8.1	7.3	Increased	Above

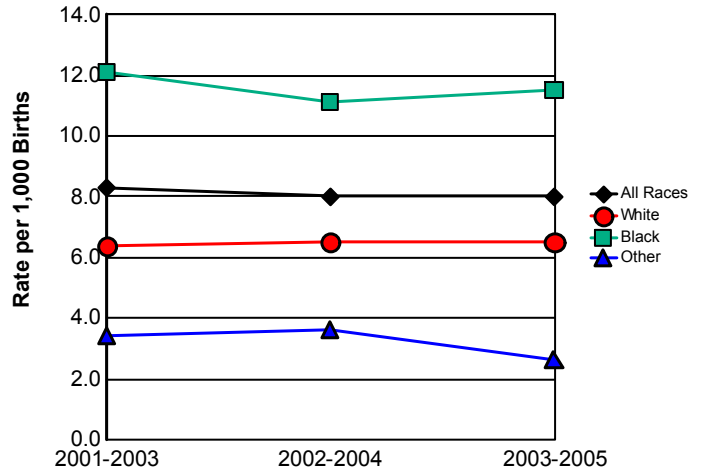
* Regardless of ethnicity. Does not include persons whose race is unknown.

Data Source: Florida Department of Health, Office of Vital Statistics

Fetal Mortality Rates



Fetal Mortality Trend Three-Year Rolling Averages



	2003	2004	2005
All Races	8.8	7.2	7.9
White	7.8	5.5	6.1
Black	11.0	10.8	12.6
Other	3.2	3.8	1.1

	2001-2003	2002-2004	2003-2005
All Races	8.3	8.0	8.0
White	6.4	6.5	6.5
Black	12.1	11.1	11.5
Other	3.4	3.6	2.6

MCH Health Problem Analysis for Duval Calendar Year 2005

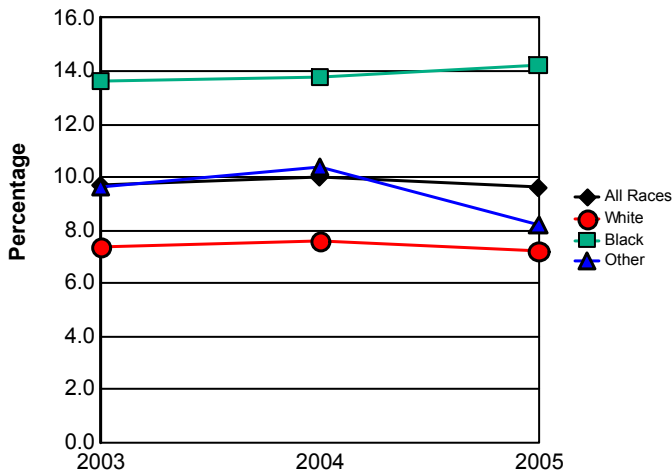
Low Birthweight

	2003		2004		2005		Comparison to Previous Year	Comparison to Florida Rate
	Duval	Florida	Duval	Florida	Duval	Florida		
Total	1,207	18,047	1,265	18,670	1,251	19,802	Decreased	
Percentage	9.7	8.5	10.0	8.6	9.6	8.8	Decreased	Above
White *	552	11,190	568	11,570	544	12,221	Decreased	
Percentage	7.4	7.1	7.6	7.2	7.2	7.4	Decreased	Below
Black *	595	6,203	615	6,134	631	6,521	Increased	
Percentage	13.6	13.2	13.8	13.1	14.2	13.6	Increased	Above
Other *	60	624	81	923	75	1,025	Decreased	
Percentage	9.6	8.4	10.4	8.8	8.2	8.8	Decreased	Below
Hispanic **	56	3,795	67	4,100	85	4,493	Increased	
Percentage	6.8	6.9	7.4	7.0	7.4	7.0	Same	Above
Non-Hispanic **	1,151	14,212	1,187	14,459	1,158	15,210	Decreased	
Percentage	9.9	9.0	10.1	9.1	9.8	9.4	Decreased	Above

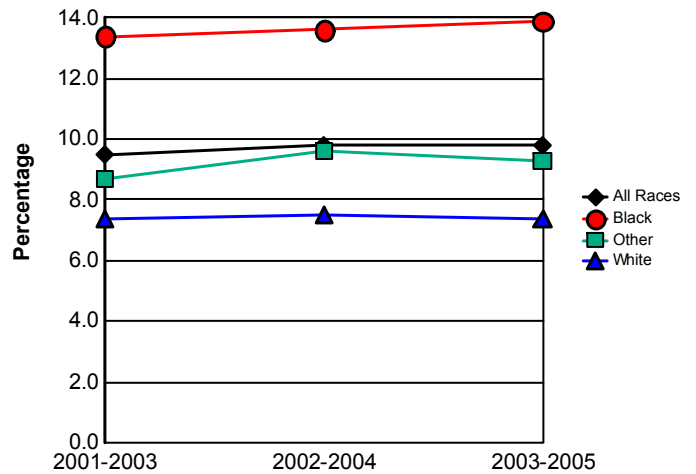
* Regardless of ethnicity. Does not include persons whose race is unknown.

Data Source: Florida Department of Health, Office of Vital Statistics

Percentage of Low Birthweight Births



Low Birthweight Births Trend Three-Year Rolling Averages



	2003	2004	2005
All Races	9.7	10.0	9.6
White	7.4	7.6	7.2
Black	13.6	13.8	14.2
Other	9.6	10.4	8.2

	2001-2003	2002-2004	2003-2005
All Races	9.5	9.8	9.8
White	7.4	7.5	7.4
Black	13.4	13.6	13.9
Other	8.7	9.6	9.3

MCH Health Problem Analysis for Duval Calendar Year 2005

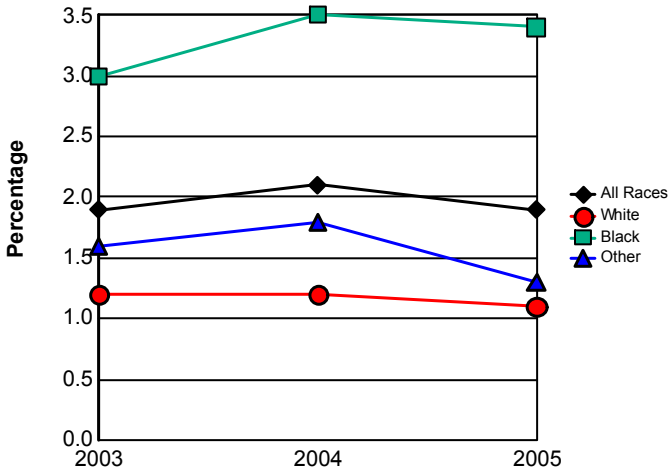
Very Low Birthweight

	2003		2004		2005		Comparison to Previous Year	Comparison to Florida Rate
	Duval	Florida	Duval	Florida	Duval	Florida		
Total	232	3,319	263	3,491	250	3,637	Decreased	
Percentage	1.9	1.6	2.1	1.6	1.9	1.6	Decreased	Above
White *	91	1,841	92	1,862	85	1,960	Decreased	
Percentage	1.2	1.2	1.2	1.2	1.1	1.2	Decreased	Below
Black *	131	1,365	157	1,470	153	1,507	Decreased	
Percentage	3.0	2.9	3.5	3.1	3.4	3.1	Decreased	Above
Other *	10	103	14	139	12	162	Decreased	
Percentage	1.6	1.4	1.8	1.3	1.3	1.4	Decreased	Below
Hispanic **	0	0	0	0	0	0	Same	
Percentage	0.0	0.0	0.0	0.0	0.0	0.0	Same	Same
Non-Hispanic **	222	2,621	249	2,775	231	2,826	Decreased	
Percentage	1.9	1.7	2.1	1.7	2.0	1.7	Decreased	Above

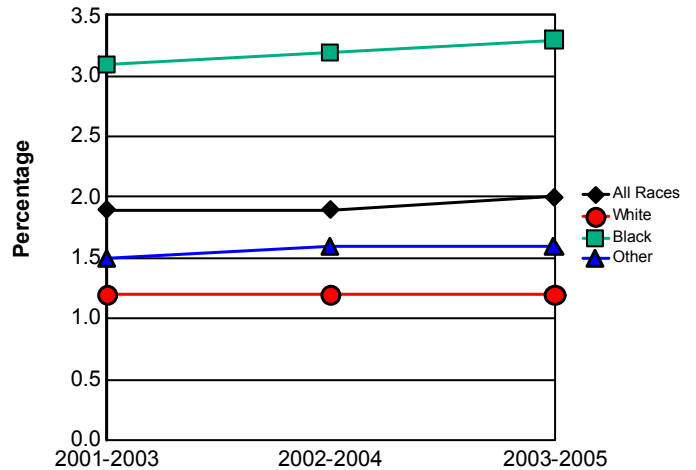
*Regardless of ethnicity. Does not include persons whose race is unknown.

Data Source: Florida Department of Health, Office of Vital Statistics

Percentage of Very Low Birthweight Births



Very Low Birthweight Trend Three-Year Rolling Averages



	2003	2004	2005
All Races	1.9	2.1	1.9
White	1.2	1.2	1.1
Black	3.0	3.5	3.4
Other	1.6	1.8	1.3

	2001-2003	2002-2004	2003-2005
All Races	1.9	1.9	2.0
White	1.2	1.2	1.2
Black	3.1	3.2	3.3
Other	1.5	1.6	1.6

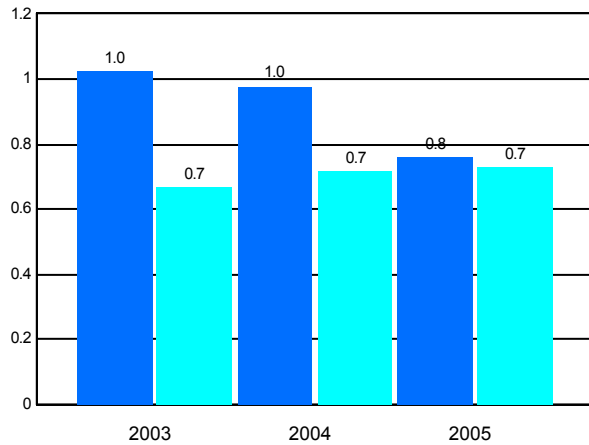
MCH Health Problem Analysis for Duval Calendar Year 2005

Births to Teens

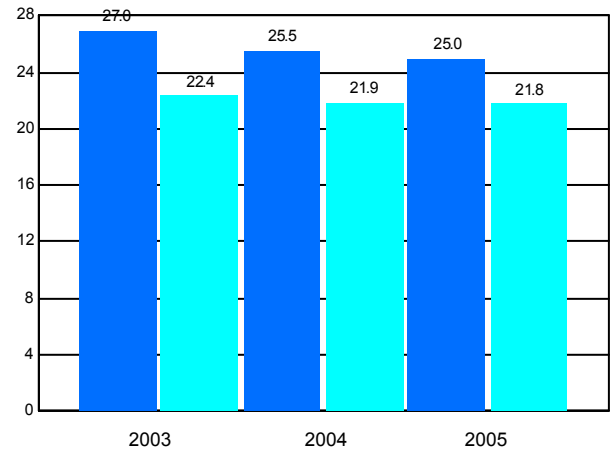
	2003		2004		2005		Comparison to Previous
	Duval	Florida	Duval	Florida	Duval	Florida	
Mothers 10-14							
Number	30	362	30	404	23	415	
Rate per 1,000	1.0	0.7	1.0	0.7	0.8	0.7	Decreased
Mothers 15-17							
Number	468	7,227	472	7,436	450	7,590	
Rate per 1,000	27.0	22.4	25.5	21.9	25.0	21.8	Decreased
Percentage of Repeat Births 15-19	16.6	15.2	17.0	15.4	15.5	16.1	Decreased

Data Source: Florida Department of Health, Office of Vital Statistics

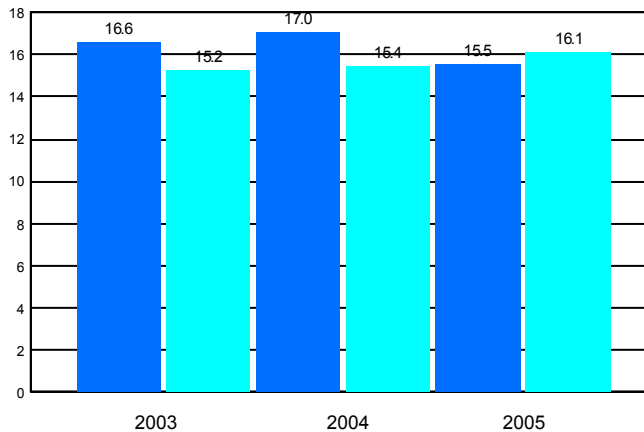
Births to Teens 10-14



Births to Teens 15-17



Repeat Births to Teens 15-19

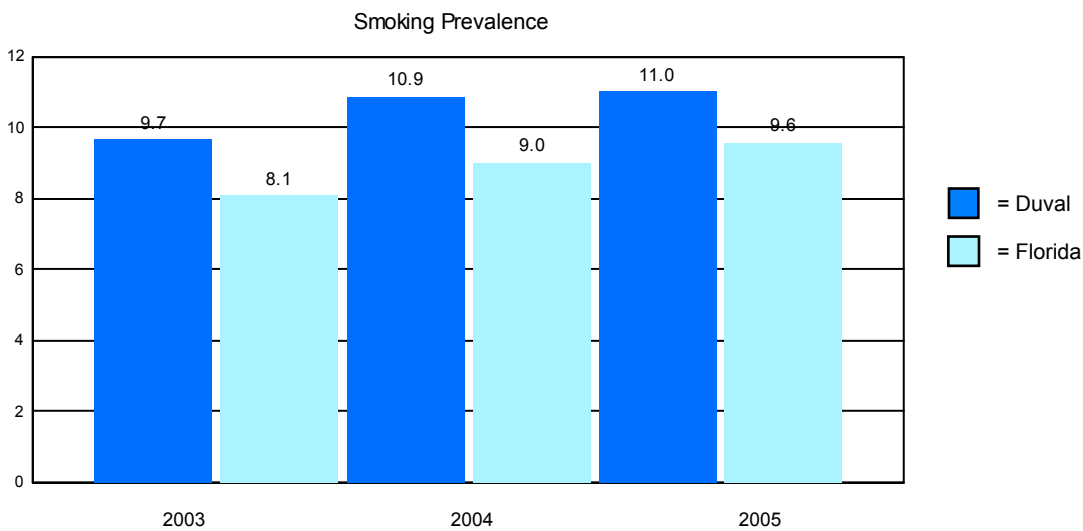


■ = Duval
■ = Florida

MCH Health Problem Analysis for Duval Calendar Year 2005

Reported Smoking Prevalence in Pregnancy

	Mothers Who Smoked	Percentage of Births
2003		
Duval	1,200	9.66
Florida	17,165	8.09
2004		
Duval	1,383	10.89
Florida	19,668	9.02
2005		
Duval	1,429	11.01
Florida	21,687	9.59



Data Source: Florida Department of Health, Office of Vital Statistics

Pediatric AIDS Cases Among Persons 0 - 4 Years of Age

	2003	2004	2005
Duval	0	2	1
Florida	17	11	6

Data Source: Florida Department of Health, Bureau of HIV/AIDS

CHD Prenatal Care Clients Offered HIV Testing

2003		2004		2005	
Duval	Florida	Duval	Florida	Duval	Florida
45.04%	86.33%	37.75%	86.34%	38.61%	83.60%

MCH Health Problem Analysis for Duval Calendar Year 2005

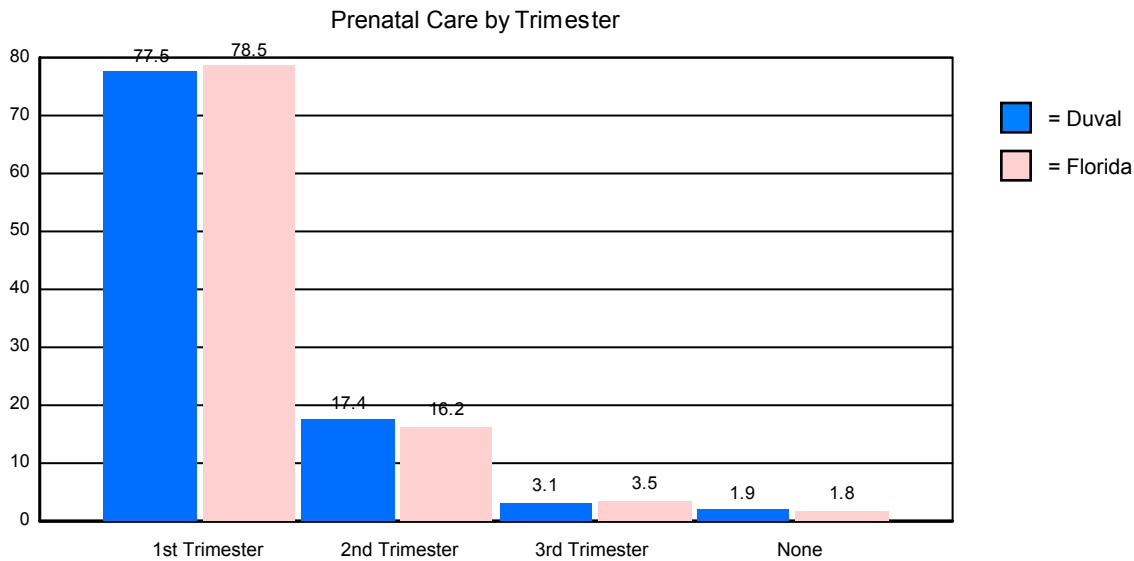
WIC Services

	Persons Eligible for WIC	Percentage Served by WIC
2003		
Duval	32,956	47.62
Florida	550,426	60.72
2004		
Duval	30,475	52.94
Florida	538,421	64.27
2005		
Duval	31,799	55.09
Florida	556,140	67.27

Data Source: Florida Department of Health, WIC & Nutrition Services

Prenatal Care by Trimester of Pregnancy

	1st Trimester	2nd Trimester	3rd Trimester	No Prenatal Care
Duval	77.54%	17.43%	3.13%	1.89%
Florida	78.54%	16.19%	3.50%	1.76%



Data Source: Florida Department of Health, Office of Vital Statistics

Immunizations Among 2-Year-Old CHD Clients

	Number Immunized		Percentage Immunized	
	Duval	Florida	Duval	Florida
2003	1,066	16,675	65.00	64.22
2004	1,213	18,481	77.31	80.17
2005	844	16,750	80.08	86.02

Data Source: Florida Department of Health, Bureau of Immunizations

**MCH Health Problem Analysis for
Duval
Calendar Year 2005**

Healthy Start Prenatal Screening and Services

	2003		2004		2005	
	Duval	Florida	Duval	Florida	Duval	Florida
Offered Rate %	99.47	85.76	91.14	87.41	99.22	91.17
Screening Rate %	55.53	51.24	59.96	59.73	68.17	67.36
Consent Rate %	55.83	59.74	65.79	68.33	68.70	73.89

	Number		Percentage	
	Duval	Florida	Duval	Florida
Estimated Number of Pregnant Women	12,901	225,115		
Offered Screen	12,800	205,231	99.22	91.17
Consenting to Screen	8,794	151,646	68.70	73.89
Positive Screen + Referred	7,849	96,528	89.25	63.65
Consenting to HS Participation	7,534	91,004	95.99	94.28
Received Initial Contact	3,805	57,381	50.50	63.05
Need Initial Assessment	1,385	33,073	36.40	57.64
Received Initial Assessment	1,058	30,335	76.39	91.72
Need Ongoing Care Coordination	1,746	32,861	45.89	57.27

	Duval			Florida
	Clients	Percentage of Clients	Encounters per Client	Percentage of Clients
Total Receiving HS Prenatal Service	8,490		3.85	3.36
Total IC/IA Only	1,459	17.18	2.42	3.13
Total IC/IA/Other HS Service	669	7.88	3.16	6.11
Track or Not Face-to-Face	1,721	20.27	5.15	3.40
Face-to-Face, without FSP	645	7.60	10.23	3.93
Face-to-Face, with FSP	148	1.74	20.29	3.99
Unable to Locate	1,337	15.75	2.91	1.84
Unable to Complete Initial Contact	1,881	22.16	1.90	2.43
Unable to Complete Initial Assessment	0	0.00	0.00	0.00

	Duval		
	Clients	Services	Services/Client
Nutritional Assessment and Counseling	0	0	0.00
Psychosocial Counseling	160	3,216	20.10
Parenting Education	907	3,210	3.54
Childbirth Education	1,037	15,439	14.89
Breastfeeding Education	418	1,463	3.50
Smoking Cessation Counseling	208	402	1.93
Interconceptional Education & Counseling	168	702	4.18

Pregnant Drug-Abusing Women

	Clients	Encounters/Client	Services/Encounter
Duval	250	8.17	3.92
Florida	4,271	7.30	3.80

**MCH Health Problem Analysis for
Duval
Calendar Year 2005**

Healthy Start Infant Screening and Services

	2003		2004		2005	
	Duval	Florida	Duval	Florida	Duval	Florida
Screening Rate %	73.29	70.85	71.20	69.62	77.59	72.94

	Number		Percentage	
	Duval	Florida	Duval	Florida
Total Number of Births	12,901	225,115		
Consenting to Screen	10,010	164,203	77.59	72.94
Positive Screen + Referred	2,143	24,124	21.41	14.69
Consenting to HS Participation	2,056	20,697	95.94	85.79
Received Initial Contact	1,883	31,048	91.59	150.01
Need Initial Assessment	894	16,973	47.48	54.67
Received Initial Assessment	822	15,732	91.95	92.69
Need Ongoing Care Coordination	883	15,590	46.89	50.21

	Duval			Florida
	Clients	Percentage of Clients	Encounters per Client	Percentage of Clients
Total Receiving HS Infant Service	6,823		2.65	
Total IC/IA Only	968	14.19	1.95	18.99
Total IC/IA/Other HS Service	548	8.03	1.29	3.55
Track or Not Face-to-Face	750	10.99	4.19	14.16
Face-to-Face, without FSP	345	5.06	8.34	13.43
Face-to-Face, with FSP	99	1.45	16.02	4.72
Unable to Locate	392	5.75	3.28	7.50
Unable to Complete Initial Contact	2,941	43.10	1.91	26.86
Unable to Complete Initial Assessment	0	0.00	0.00	0.21

	Duval		
	Clients	Services	Services/Client
Nutritional Assessment and Counseling	0	0	0.00
Psychosocial Counseling	49	1,019	20.80
Parenting Education	555	1,463	2.64
Childbirth Education	0	0	0.00
Breastfeeding Education	257	818	3.18
Smoking Cessation Counseling	31	123	3.97
Interconceptional Education & Counseling	43	249	5.79

Substance-exposed Newborns

	Clients	Encounters/Client	Services/Encounter
Duval	209	7.45	3.89
Florida	3,819	11.32	3.91